

NATIONAL APERTURE, INC.

P: 800-360-4598 ~ F: 603-893-7857



- HOME
- MOTION PRODUCTS
- INFORMATION
- APERTURE PRODUCTS
- TERMS
- CONTACT US

Motorized Stages

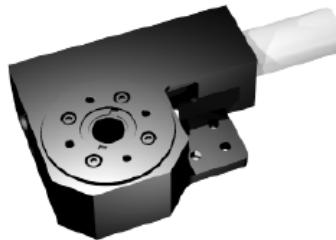
MM-3M-R

Rotary Motorized MicroMini™ Stages

FEATURES

- ❖ 3D models available
- ❖ Dual class 7 custom bearings for MM-3M-R
- ❖ Single class 7 custom bearing for MM-3M-A & B
- ❖ Multi-faceted connection interface
- ❖ Homing Switch

When ordering multi-axis units the completed assembly will include all necessary braces, kits and hardware



[View Schematic](#)

GENERAL DATA:

- ❖ **Load capacity:** 2 kg and 0.5 kg Direct Top Load
- ❖ **Rotary Travel:** 360°
- ❖ **Table Speed:** 0.409 rad/sec
- ❖ **Weight:** 76 grams

GENERAL PRECISION:

- ❖ **Repeatability:** 70 µrad
- ❖ **Accuracy:** 400 µrad
- ❖ **Axial Wobble:** 291 µrad
- ❖ **Planar Shift:** 1.2 µm
- ❖ **Eccentricity:** 3 µm

Product Selector

NOTE: If viewing on a cell phone, landscape mode is recommended.

SELECT CONFIGURATION

Qty:

[Click here for accessories](#)

3D models available

Speed & Resolution		Specifications				GH Ratio
Speed/Resolution	Max. Travel Rate		Resolution			
	rad/sec	deg/sec	µrad/count	deg/count	arcsec/count	
SPRS1	1.6363	93.7531	122.7185	0.007031	25.312508	16:1
SPRS2	0.4091	23.4397	30.6796	0.001758	6.328122	64:1
SPRS3	0.1023	5.8614	7.6699	0.000439	1.582030	256:1
SPRS4	0.0256	1.4668	1.9175	0.000110	0.395513	1024:1

Shopping Cart

Items List

Part	Qty	Price	Subtotal
Total: \$0.00			
clear items			



[Download Catalog](#)

Motorized Stages

- [MM-1M Linear](#)
- [MM-3M-ST Linear](#)
- [MM-3M-FOS Linear](#)
- [MM-3M-F Linear](#)
- [MM-4M-F Linear](#)
- [MM-4M-EX Linear](#)
- [MM-5M Linear](#)
- [MM-3M-R Rotary](#)
- [MM-4M-R Rotary](#)
- [MM-3M-G Goniometer](#)
- [MM-4M-G Goniometer](#)