

# M7

## CLASS LONG RANGE MULTI SENSOR REMOTE SYSTEMS



**GOLD  
STANDARD**

# F/1.2 CONTINUOUS ZOOM

## ULTRA LONG RANGE HARDENED/COATED OPTICS

Extreme long range night vision target detection in pitch darkness and harsh environments can present a challenge. The M-CLASS PTZ EO/IR Thermal infrared imaging camera platforms can achieve advanced detection, recognition and identification of distant targets at very long ranges with extreme accuracy and precision. Our affordable steerable PTZ Thermal imaging systems utilize the latest in highly sensitive, high resolution sensors and can be configured with ULTRA LONG RANGE PRECISION HARDENED GERMANIUM TELEPHOTO ZOOM OPTICS that offer target detection **at up to 35 KILOMETER + RANGE.**

**THE HIGHLY CONFIGURABLE M-CLASS EO/IR SYSTEMS  
ARE SUITABLE FOR A WIDE RANGE OF APPLICATIONS.**

Sierra Pacific Innovations Corp - Las Vegas, NV, USA - 702-369-3966 - sales@x20.org - www.x20.org

SPI products may be under control of BIS or Department of State ITAR. Sales to qualified entities only. This document is informational only and not an offer to sell. Contact SPI Corp for an official quotation. Specifications subject to change without notice. SPI terms and conditions can be reviewed online at <http://www.x20.org/terms-conditions/>



# M7

## VEHICLE SYSTEMS CLASS LONG RANGE MULTI SENSOR REMOTE SYSTEMS

### BORDER PATROL

### COMMAND CENTER

### MAST MOUNTED

### DVE

### CRASH RESCUE

**100%  
DUTY CYCLE**

## RUGGED PRECISION

### ZERO BACKLASH ALL METAL CONSTRUCTION



The M-CLASS Multi Sensor PTZ platforms are the ideal solution for your vehicle borne imaging application. Designed from the ground up for rough duty in the harshest of conditions the M-CLASS will stand up to the punishment of on or off road vehicle use. Our systems have been deployed in every vehicle situation from combat missions in the Middle East to security patrols at critical facilities to law enforcement and border patrol missions. The M-CLASS stabilized platform enables extreme long range imaging from vehicle positions that are impossible for other systems. With 360° continuous rotation and ultra long range optics the M-CLASS is the stabilized platform to track targets in any conditions.

**THE HIGHLY CONFIGURABLE M-CLASS EO/IR SYSTEMS ARE THE SINGLE SOLUTION FOR ALL YOUR VEHICLE BASED IMAGING APPLICATIONS**

Sierra Pacific Innovations Corp - Las Vegas, NV, USA - 702-369-3966 - sales@x20.org - www.x20.org

SPI products may be under control of BIS or Department of State ITAR. Sales to qualified entities only. This document is informational only and not an offer to sell. Contact SPI Corp for an official quotation. Specifications subject to change without notice. SPI terms and conditions can be reviewed online at <http://www.x20.org/terms-conditions/>





# M7

## CLASS LONG RANGE MULTI SENSOR REMOTE SYSTEMS

### MARINE SYSTEMS

### COASTAL SURVEILLANCE

### NAVAL VESSEL

### USV / ASV

### HARBOR PATROL

### SEARCH / RESCUE

## MARINE GRADE

### RELIABLE OPERATION IN ALL ENVIRONMENTS

**OCEAN  
APPROVED**



The M-CLASS MARINE Long Range Multi Sensor platform is a robust Marine Grade imaging system designed to withstand the rigors of oceangoing vessels in all weather conditions. The M-CLASS can be used as a stand alone system or can be easily integrated into existing marine electronics including radar and navigation systems. The highly configurable M-CLASS can be controlled by a variety of bridge mounted controllers or tied into common protocol systems you already have. The long range stable M-CLASS is ideal for coastal surveillance from land or from vessels underway. Due to its unique mix of high reliability, extreme imaging performance and low cost the M-CLASS is the preferred platform for integration into the latest USV/ASV programs.

**THE HIGHLY CONFIGURABLE M-CLASS EO/IR SYSTEMS ARE THE SINGLE SOLUTION FOR ALL YOUR VEHICLE BASED IMAGING APPLICATIONS**

Sierra Pacific Innovations Corp - Las Vegas, NV, USA - 702-369-3966 - sales@x20.org - www.x20.org

SPI products may be under control of BIS or Department of State ITAR. Sales to qualified entities only. This document is informational only and not an offer to sell. Contact SPI Corp for an official quotation. Specifications subject to change without notice. SPI terms and conditions can be reviewed online at <http://www.x20.org/terms-conditions/>





# M7

## CLASS LONG RANGE MULTI SENSOR REMOTE SYSTEMS

### PERIMETER SYSTEMS

#### FOB

#### HOMELAND SECURITY

#### DROP DEPLOYABLE

#### BORDER PATROL

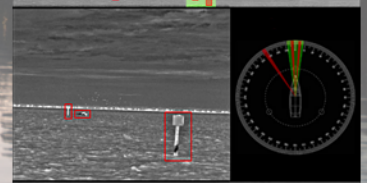
#### PIPELINE SECURITY

#### SLEW TO CUE

#### EXTREME RANGE

#### UP TO 45KM STAND OFF DETECTION RANGES

**100%  
COMPATIBLE**



The M-CLASS Multi Sensor PTZ Platforms are 100% compatible making integration into virtually any facility wide system a simple endeavor. The highly configurable modular design makes the M-CLASS right at home in any perimeter security ecosystem. The M-CLASS platform can be custom configured to your exact application and specification, with a wide array of HD TV, CCD, CCTV, CIS, COLOR NIGHT VISION, HD Thermal, NIR, SWIR, VNIR, LWIR, MWIR & FLIR Optics, to address your medium to extreme long range perimeter security needs. Optional slew to cue radar integration, remote solar, gps, fiber, microwave, wireless, ethernet, ip, ONVIF, POE, RS485, RS422 serial digital compass and more are available in the M-CLASS platform.

**THE HIGHLY CONFIGURABLE M-CLASS EO/IR SYSTEMS ARE THE SINGLE SOLUTION FOR ALL YOUR INTEGRATED IMAGING INSTALLATIONS**

Sierra Pacific Innovations Corp - Las Vegas, NV, USA - 702-369-3966 - sales@x20.org - www.x20.org

SPI products may be under control of BIS or Department of State ITAR. Sales to qualified entities only. This document is informational only and not an offer to sell. Contact SPI Corp for an official quotation. Specifications subject to change without notice. SPI terms and conditions can be reviewed online at <http://www.x20.org/terms-conditions/>





# M7

## AIR TRACKING SYSTEMS

### CLASS LONG RANGE MULTI SENSOR REMOTE SYSTEMS

#### SLEW TO CUE



#### DRONE DENIAL

#### HOMELAND SECURITY

#### AIRPORT DEFENSE

**RADAR  
READY**

#### PRECISION TRACK

#### POSITIONING PERFORMANCE THREAT TRACKING



The M-CLASS Multi Sensor PTZ platforms are the perfect imaging system for identifying and tracking aircraft and UAV's. The precision pan tilt base makes locating and locking onto airborne threats easy and repeatable. Even small cross section uncooperative radar targets like UAV/UAS craft are no match for the M-CLASS imaging systems. The highly configurable M-CLASS can be tailored to your exact needs based on your intended application. Installation options include integration with radar systems (slew to cue), fiber optic com, ethernet IP (ONVIF), RS-485/422 control, common protocol language and software tracking suite. Sensor options include HD THERMAL, SWIR, LWIR, MWIR, COLOR NIGHT VISION, EMCCD, CCTV, CCD and more.

**THE HIGHLY CONFIGURABLE M-CLASS EO/IR SYSTEMS ARE THE SINGLE SOLUTION FOR ALL YOUR AIRCRAFT TRACKING APPLICATIONS**

Sierra Pacific Innovations Corp - Las Vegas, NV, USA - 702-369-3966 - sales@x20.org - www.x20.org

SPI products may be under control of BIS or Department of State ITAR. Sales to qualified entities only. This document is informational only and not an offer to sell. Contact SPI Corp for an official quotation. Specifications subject to change without notice. SPI terms and conditions can be reviewed online at <http://www.x20.org/terms-conditions/>





# M7

# CLASS LONG RANGE MULTI SENSOR REMOTE SYSTEMS

## SAMPLE FEATURES

### HIGH RESOLUTION THERMAL FLIR INFRARED IMAGING CAMERA

The M7 Ultra Long Range Thermal PTZ FLIR system comes with hand selected, top of the line military grade MWIR or LWIR cooled or uncooled detector arrays that go through rigorous testing and ensure extreme high resolution and High sensitivity.

### UNBEATABLE ULTRA EXTREME LONG RANGE TELEPHOTO ZOOM OPTICS

The M7 Has both LWIR F/1.2 Continuous Zoom and MWIR F/4 Lenses catered to your range requirements, Our lenses are top grade hardened, coated and sealed with high precision continuous zoom mechanisms. Our optics keep in focus throughout the entire zoom cycle from wide to telephoto fields of view. Our Daytime optics come in SD or HD and 4K, with optical CCTV lens solutions up to from 25mm to 2500mm, Our lenses really reach out to insane long ranges!

### 360° CONTINUOUS ROTATION

Advanced "slip-ring" design lets the M7 PTZ FLIR IR CAMERA and its Multiple sensor payloads rotate continuously in either direction to stay locked onto the target. Slue to cue Radar and target tracking is available.

### ADVANCED EOIR SENSORS

The M7 PTZ FLIR incorporates next generation Sensor Technologies, we use the latest Military grade sensors and can integrate exotic sensors to compliment the thermal and TV day optics. Optional Cameras include SWIR, BstFA, HFIS. We can also custom integrate your specific sensors/cameras into the M7 System. Included is Continuous electronic digital zoom and a wide array of image enhancing and correcting algorithms that assure you the best image performance. **NOW AVAILABLE WITH THE OSPREY COLOR NIGHT VISION CAMERA.**

### USER PROGRAMMED AUTO-TOUR

The M7 thermal imaging IR security camera is based on an intelligent PTZ platform that can be user programmed to follow pre set tours.

### INTEGRATED WIPER

The M7 is an all weather solution. An integrated wiper keeps dirt and debris from clouding your image.

### EASY INSTALLATION

The M7 is the easiest thermal pan tilt zoom system to install. Integrates simply with all security systems. **FULLY UNIVERSAL AND COMPATIBLE WITH ANY NETWORK INTEGRATION SCENARIOS WITH WIRED, GPS, LOCAL, REMOTE, IP, STREAMING, ONVIF, POE POWER OVER ETHERNET, ANALOG, ETHERNET, SOLAR, FIBER, MICROWAVE INSTALLATIONS.**

### CUSTOMIZABLE / BEST VALUE TO PERFORMANCE

The M7 PTZ FLIR configurations include long range thermal, HD Thermal Imaging LWIR and MWIR detector arrays, network interface, mast mounted, slew to cue, drop deployable, Radar, Panoramic imaging, marine, emergency response vehicle, tactical vehicle, surveillance truck, border, sea, coastline and more with EO/IR add-ons such as NIR, SWIR, MWIR, LRF LASER RANGE FINDERS, SCMOS, LOW LIGHT CMOS, BSTFA, HFIS, LASER IR INFRARED ILLUMINATORS, POINTERS, DESIGNATORS, DAZZLER & SPOTLIGHT, tracking, GPS picture in picture, fusion & image blending.



WHITE HOT



BLACK HOT



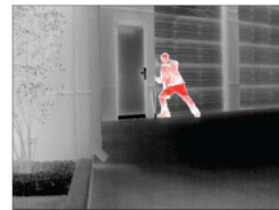
SEPIA



IRON



RAINBOW



RED HOT

**THE HIGHLY CONFIGURABLE M-CLASS EO/IR SYSTEMS ARE THE SINGLE SOLUTION FOR ALL YOUR ADVANCED IMAGING APPLICATIONS**

Sierra Pacific Innovations Corp - Las Vegas, NV, USA - 702-369-3966 - sales@x20.org - www.x20.org

SPI products may be under control of BIS or Department of State ITAR. Sales to qualified entities only. This document is informational only and not an offer to sell. Contact SPI Corp for an official quotation. Specifications subject to change without notice. SPI terms and conditions can be reviewed online at <http://www.x20.org/terms-conditions/>





# M7

## CLASS LONG RANGE MULTI SENSOR REMOTE SYSTEMS

### SAMPLE OPTICS



### SAMPLE MWIR COOLED THERMAL LENS OPTIONS

- 15-225 mm MWIR continuous zoom hardened, coated/sealed germanium lens.
- 15-305 mm MWIR continuous zoom hardened, coated/sealed germanium lens.
- 18-335 mm MWIR continuous zoom hardened, coated/sealed germanium lens.
- 35-670 mm MWIR continuous zoom hardened, coated/sealed germanium lens.
- 35-720 mm MWIR continuous zoom hardened, coated/sealed germanium lens.
- 35-835 mm MWIR continuous zoom hardened, coated/sealed germanium lens.
- 47-595 mm MWIR continuous zoom hardened, coated/sealed germanium lens.
- 88-1220 mm MWIR continuous zoom hardened, coated/sealed germanium lens.
- 88-1420 mm MWIR continuous zoom hardened, coated/sealed germanium lens.
- 55-1650 mm MWIR continuous zoom hardened, coated/sealed germanium lens.

***We Have Thermal Imaging Lenses As Fast As f/1.0 and Focal Lengths From 2mm To 2000mm***



***THE M-CLASS IS CAPABLE OF DETECTION RANGES UP TO 45KM  
CONTACT US TO DISCUSS YOUR OPTIONS***

**Sierra Pacific Innovations Corp - Las Vegas, NV, USA - 702-369-3966 - sales@x20.org - www.x20.org**

SPI products may be under control of BIS or Department of State ITAR. Sales to qualified entities only. This document is informational only and not an offer to sell. Contact SPI Corp for an official quotation. Specifications subject to change without notice. SPI terms and conditions can be reviewed online at <http://www.x20.org/terms-conditions/>

