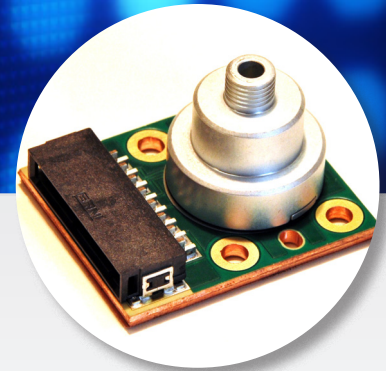


LumiBright™ FC 2400B-510

The Model FC 2400B-510 is designed for high luminous flux, white LED illumination into optical fibers, bundles and light guides sized from 1.0 to 3.0mm in diameter. The product features patented technologies that encompass non-imaging optics with chip-on-board metallic substrates to provide both optimum luminous efficacy as well as ideal thermal management.

The 2400B-510 is ideally suited for endoscope and microscope illuminator applications.



Benefits:

- Intense and stable optical power
- Small footprint
- Continuous high current or pulsed operation
- RoHS compliant - Environmentally friendly

Features:

- Supports fiber apertures - 1.0mm - 3.0mm
- White (4700K+/-300)
- High thermal conductivity metal core PCB
- COB array technology, 7 Die
- Patent-pending technology

Options:

- Heat sink and thermal pads
- Drivers and controllers

Typical Applications:

- Medical endoscopy
- Microscopes
- Machine vision
- Industrial borescopes

Table of Contents

Product Specifications.....	2
Notes.....	2
Charts.....	3
Installation Control Drawings.....	4
Accessories.....	4



SPECIFICATIONS

The LumiBright FC 2400B-510 is a fiber coupled device with a seven white die PCB using our standard 42 mil die.

The data below is provided as a general guideline for a 7 die configuration.

Caution: Never connect your unit to an open circuit voltage that is more than 1 Volt above the recommended maximum voltage.

Table 1

Assembly	Max. No. 42 mil Die	Numerical Aperture (NA)
2400B-510	7	0.66

Parameter	Specifications	Comment
Drive current	Continuous: 2A Max	Intermittent use up to 3A possible
Forward voltage	Turn on: 2.5V - Limit: 4.0V	Requires constant current operation
Numerical aperture (NA _o)	0.66	
Clear aperture (CA _o)	3.1 mm	
Patch cord connector	SMA905	Options available
Electrical connector	1 row, 8 pin	Surface mount, high current
Overall size (mm)	30 x 36 x 21	W x L x H
Thermal impedance	<1.0 °C/W	Typical for 1 die
Thermistor B _{25/85}	3574 to 3646	For 10 kΩ
Thermistor impedance	10 kΩ	At 25°C
Operating temperature	-40° C to 85° C	Depending on drive conditions
Lifetime (Hours)	–	Depends on drive conditions and temperature

Notes:**Fiberoptic Coupling Efficiency**

The maximum coupling efficiency for the Model 2400B-510 requires the use of a fiberoptic or lightguide with equivalent specifications for both the nominal values of Numerical Aperture (NA_o) and Clear Aperture (CA_o). When the lightguide design parameters of NA_f or CA_f are smaller than the nominal values of the Model 2400B-510, the coupling efficiency is reduced by the square of the ratios, (NA_f/NA_o)² and/or (CA_f/CA_o)². Other factors that contribute to coupling efficiency are the reflectance loss at the face of the fiberoptic or lightguide, as well as the packing fraction when using a fiber bundle.

Thermal Management

The 2400B-510 uses a metal core circuit board for high thermal conductivity that allows heat to dissipate in all directions. Reduced overall thermal resistance results in increased LED performance. When thermal energy generated exceeds the thermal energy dissipated, an additional means of cooling may be required to maintain LED performance. Some applications cannot efficiently dissipate enough heat from the circuit board alone and an external heat sink is recommended. The external heat sink is an efficient and inexpensive method of extending the surface area necessary to dissipate heat generated by the LED array. The 2400B-510 circuit board features an attached thermal pad for heat sink contact, no thermal grease is needed. Adding the feature of forced air convection across the heat sink fins removes heat faster and more efficiently. This feature is often necessary when ambient airflow is limited or non-existent. Every 2400B-510 circuit board has a built-in thermistor for temperature monitoring. Lifetime of the LEDs will be maximized if the temperature of the circuit board is maintained below 60° C.

CHARTS

* All parameters measured driving with constant current and collecting light emitted from a coupled glass light pipe; 3.0 mm diameter, NA 0.66.

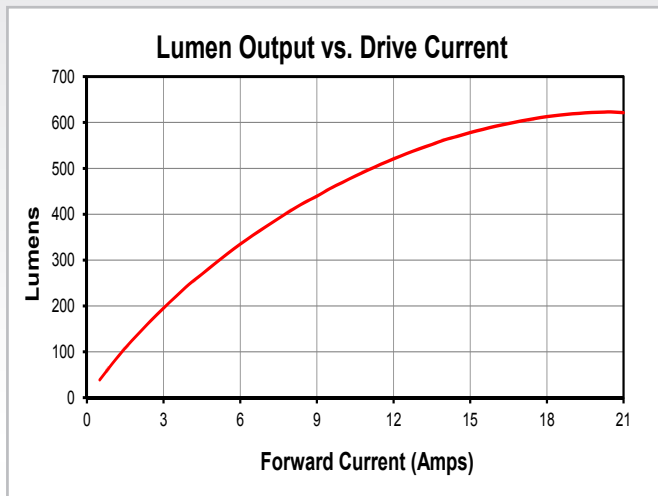


Figure 1

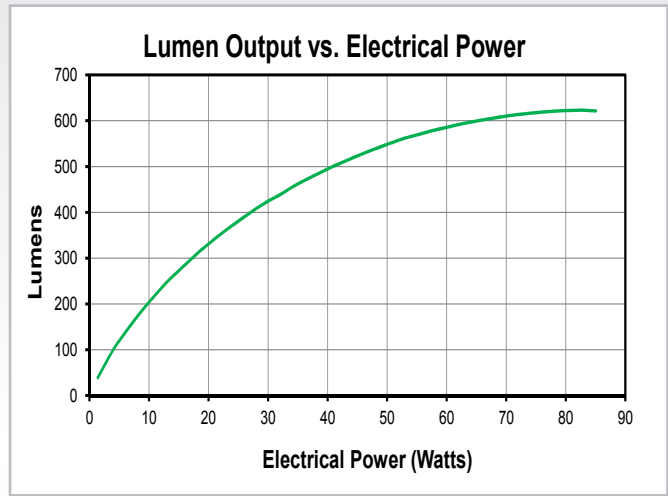


Figure 2

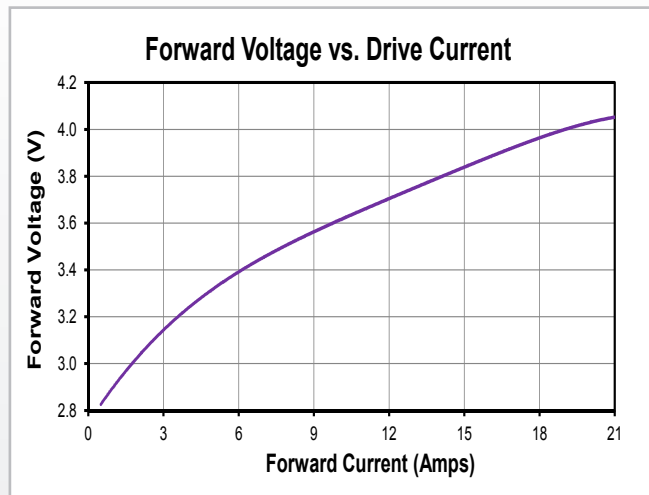


Figure 3

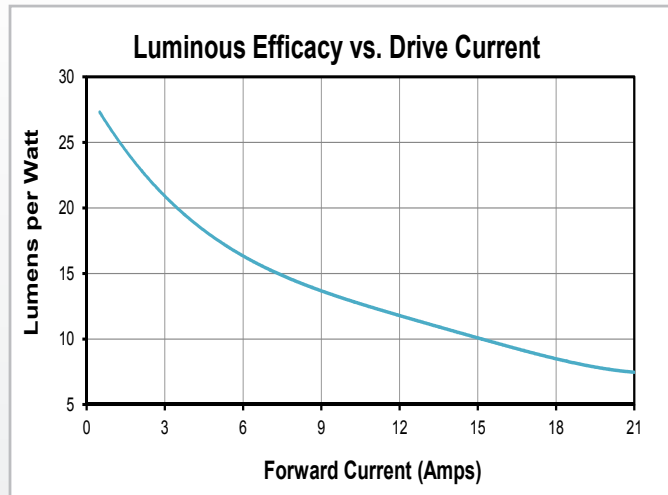


Figure 4

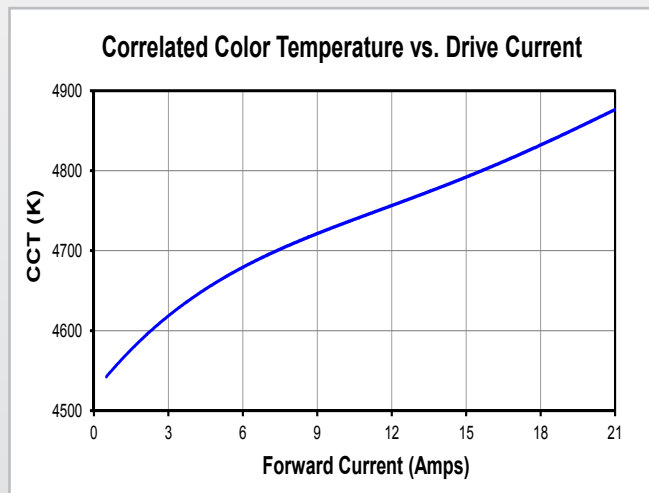


Figure 5

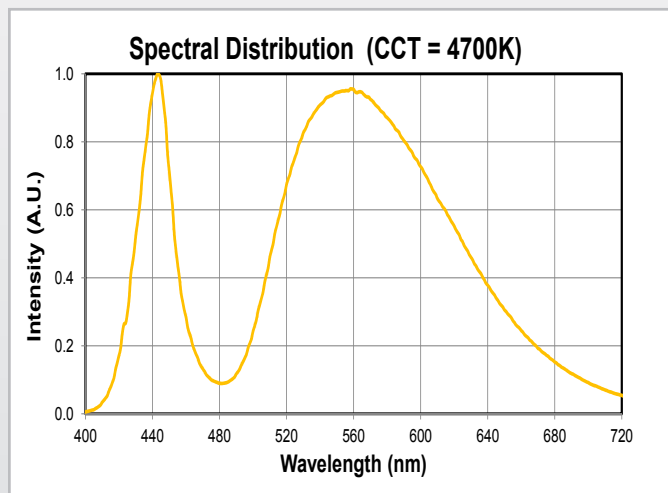
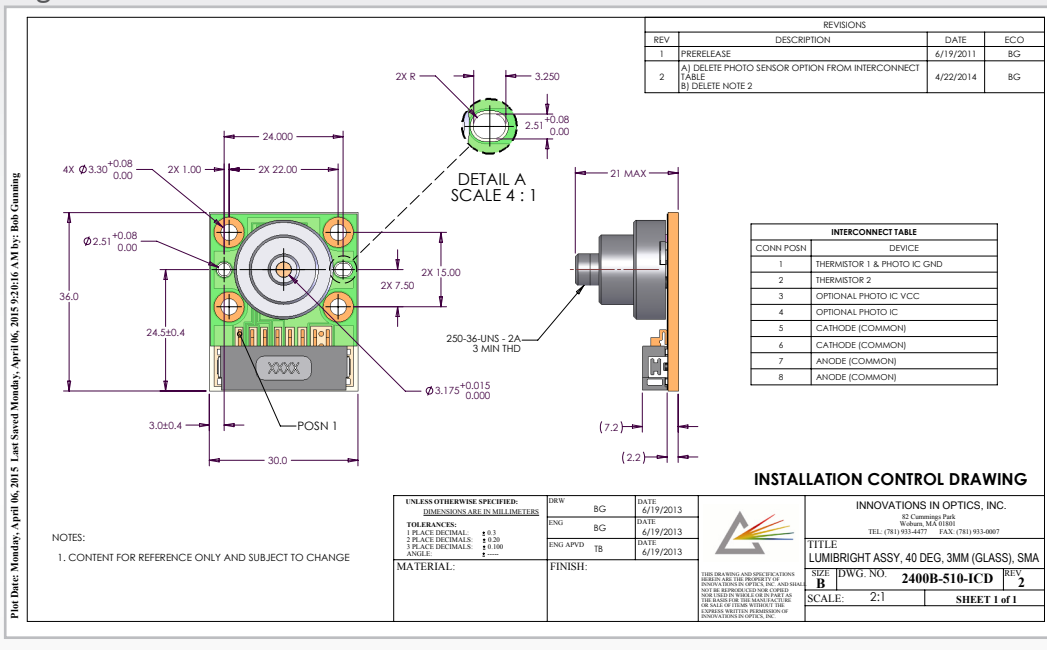


Figure 6

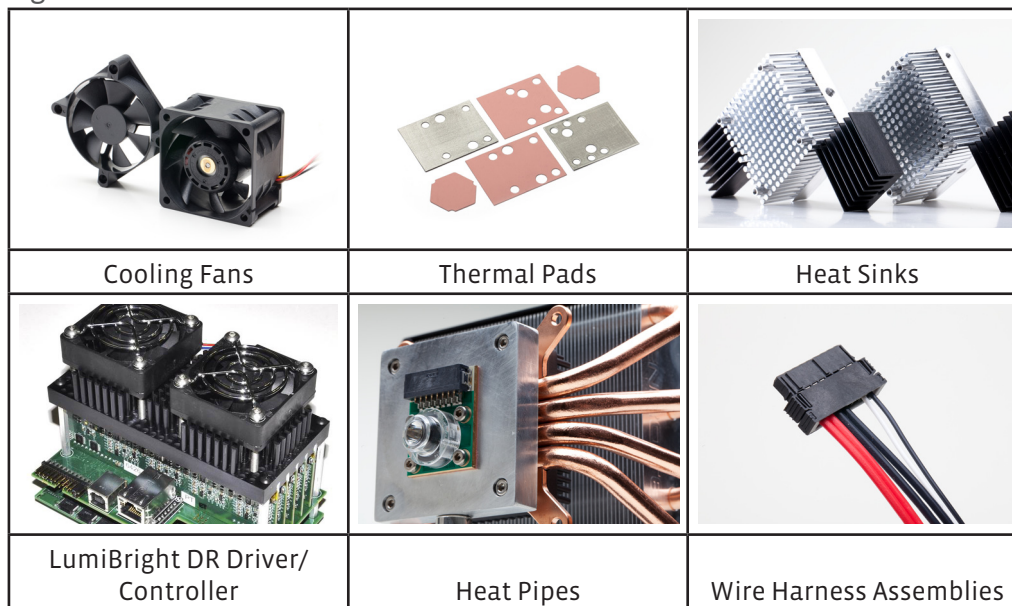
INSTALLATION CONTROL DRAWING

Figure 7



ACCESSORIES

Figure 8



The products, their specifications and other information appearing in this document are subject to change by Innovations in Optics, Inc. (IOI) without notice. IOI assumes no liability for errors that may appear in this document, and no liability otherwise arising from the application or use of the product or information contained herein. None of the information provided herein should be considered to be a representation of the fitness or suitability of the product for any particular application or as any other form of warranty. IOI product warranties are limited to only such warranties as accompany a purchase contract or purchase order for such products. Nothing herein is to be construed as constituting an additional warranty. No information contained in this publication may be considered as a waiver by IOI of any intellectual property rights that IOI may have in such information. LumiBright™ is a trademark of IOI, all rights reserved. This product is protected by U.S. Patents and Patents Pending in the U.S. and other countries.