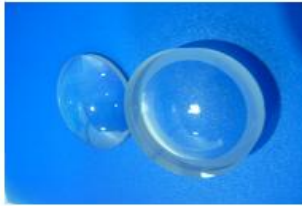
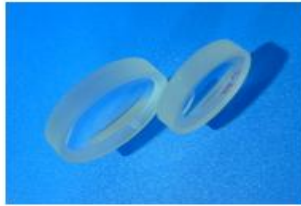




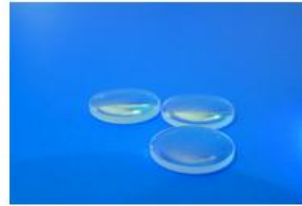
## Optical Lens



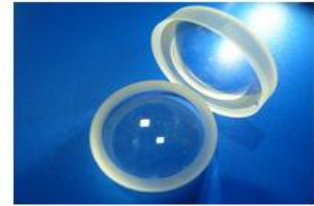
Plano-Convex Lens



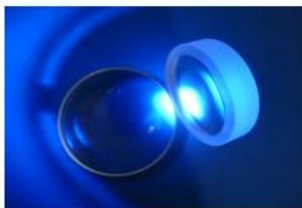
Plano-Concave Lens



Double Convex Lens



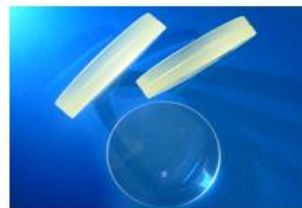
Double Concave Lens



Concave-Convex Lens (Meniscus Lens)



Cylindrical Lens



Achromatic Lens



Triplet Lens

Specification	Product Drawing	Coating Curve	In Stock Information
---------------	-----------------	---------------	----------------------

Specification	Commercial	High Precision
<b>Material</b>	As Required Schott, CDGM, etc.	As required Schott, CDGM, etc.
<b>Diameter Tolerance</b>	+0.00/-0.20mm	+0.00/-0.05mm
<b>Focal Length Tolerance</b>	Typical +/-5% @633nm	Typical +/-2% @633nm
<b>Centration</b>	Typical <3arcmin	Typical <3arcmin
<b>Surface Flatness@632.8nm</b>	L/4	L/8
<b>Surface Quality</b>	80-50	40-20
<b>Bevel</b>	0.2-0.5	0.05-0.2
<b>Coating</b>	As required, with paint, Protection coating, high precision	

\* Glued lens like Achromatic, triplet are still available

Different coating like AR, HR, mirror, dielectric coating available.

Painting upon customer request

Cement process still available

RMS <0.2nm super polishing lens for R&D