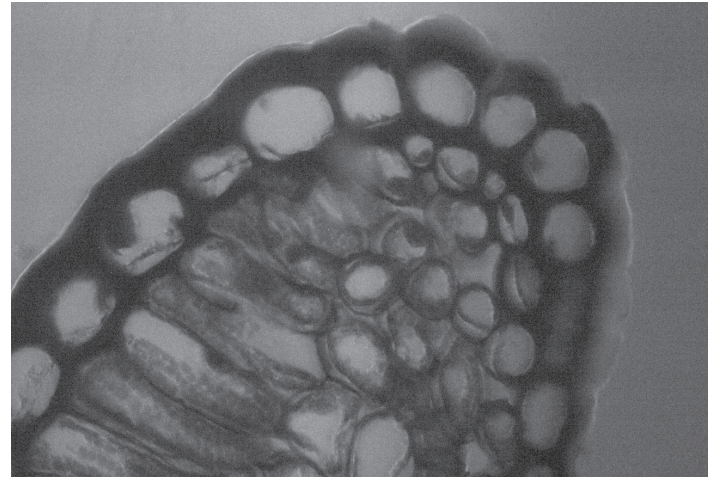


Lambert sCMOS

High sensitivity, high resolution, high dynamic range

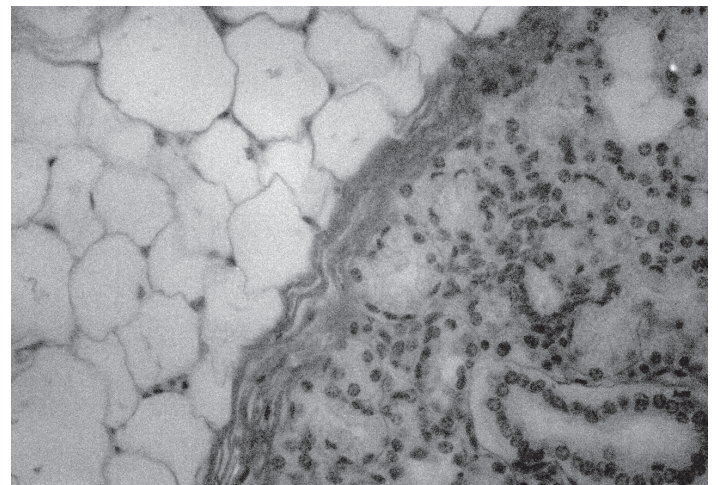


Helleborus

The Lambert sCMOS offers a simple, affordable and efficient imaging solution for scientific research, R&D, machine vision and other industrial applications. With its sCMOS image sensor, this camera produces excellent images in low-light conditions and situations that require a high dynamic range.

Automatic gain control (AGC), automatic exposure control (AEC) and non-uniformity correction (NUC) optimize image quality to match the light conditions.

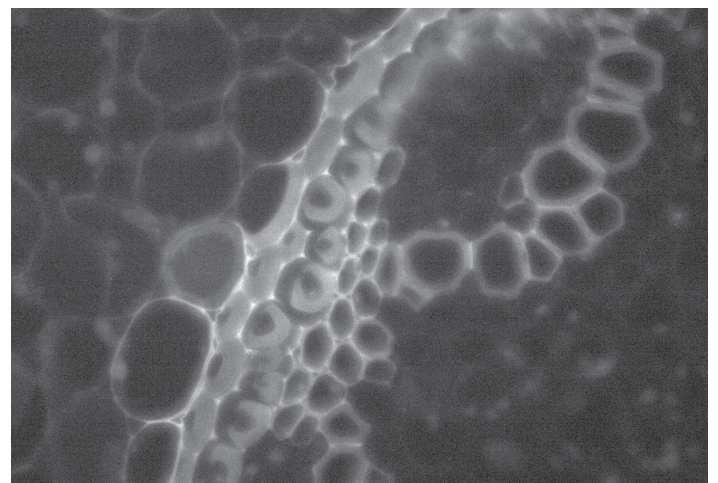
With the Lambert sCMOS software, it's easy to record and analyze images. These images can also be viewed in the popular image processing platform ImageJ/FIJI.



Fat tissue

Applications

- Biomedical imaging
- Scientific research
- Machine vision
- Industrial imaging
- Low-light imaging
- Microfluidics
- Spinning-disk confocal microscopy
- Light sheet microscopy



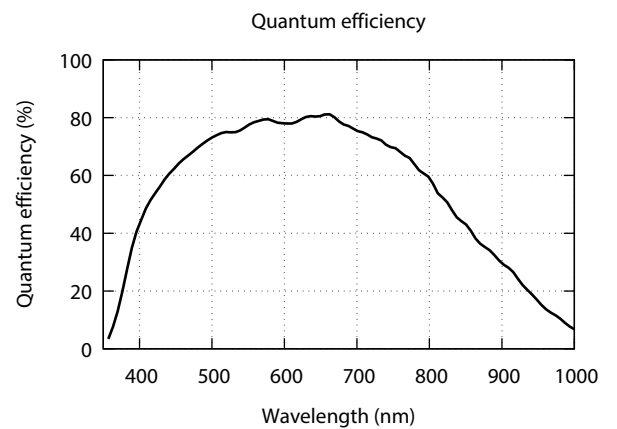
Convallaria

Specifications are subject to change without prior notice.



Specifications

Camera resolution	1280 x 1024 pixels
Sensor pixel size	9.7 μm x 9.7 μm
Sensor full-well capacity	> 25000 e ⁻
Sensor dynamic range	> 60 dB
Frame rate	Up to 100 fps at full resolution
Sensor shutter mode	Rolling shutter
Read noise	< 4 e ⁻ med.
Lens mount	CS
Interface	10/8 bit Base CameraLink compatible
Operating temperature	-40°C to +60°C
Storage temperature	-50°C to +80°C



Specifications are subject to change without prior notice.