

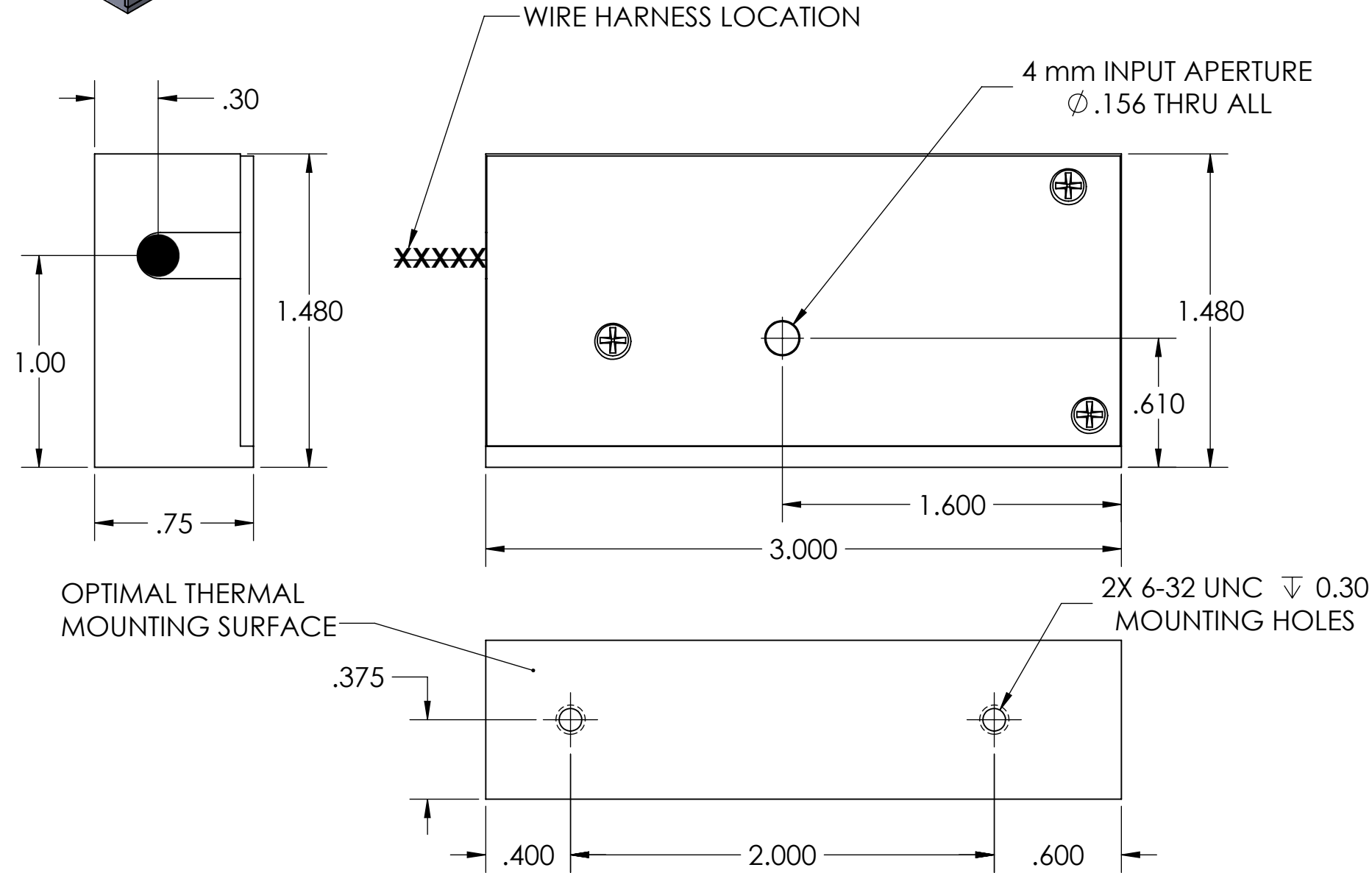
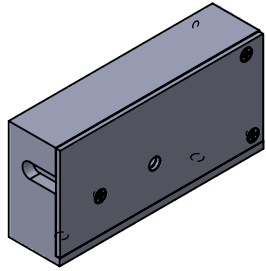
NOTES (UNLESS OTHERWISE SPECIFIED):

1. ALL COMPONENTS AND MATERIALS OF THIS ASSEMBLY OR PART MUST BE CERTIFIABLY ROHS COMPLIANT.
2. 3D DATA BASE SHALL BE USED IN CORRELATION WITH THIS DRAWING FOR FEATURES NOT DIMENSIONED ON FACE OF THIS DRAWING.


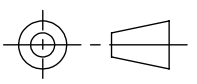
1. 3D MODEL (STEP) FILE AVAILABLE UPON REQUEST

ASSEMBLE PER NM LASER PROCEDURE SPECIFICATIONS

REVISIONS				
ECO#	REV.	DESCRIPTION	DATE	APPROVED
	A	INITIAL RELEASE	1/10/2020	M.K.
	B	UP-REV ADDED OPTICAL DATA	6/26/2020	B.L.



NM LASER LST4WBK SPECIFICATIONS	
SHUTTER CLASS	SAFETY / PROCESS
APERTURE DIAMETER	4 mm
TYPICAL BEAM DIAMETER	2 mm
MAX. CW OPTICAL POWER	25 W, 50 W CUSTOM DIELECTRIC
DIELECTRIC OPTICS	1064 nm (-1), 532 nm (-2), 355 nm (-3), 266 nm (-4), & 532/1064 nm (-12)
METAL OPTICS	CO2 (-C2), IR (-IR)
THERMAL POWER DISSIPATION	3W HOLD OPEN, 5W @ 5 Hz
ENERGIZE	APPLY 24 VDC for 15 ms
HOLD OPEN	APPLY 6 VDC CONTINUOUS
MINIMUM HOLD VOLTAGE	4 VDC
MAX. SHUTTER REP RATE	5 Hz
SWTCHING SPEED	5 ms + COMMAND DELAY
NOMINAL COIL IMPEDANCE	8 Ohms
POSITION SENSORS	STANDARD, 5V TTL LOGIC
WIRE HARNESS	6 LEAD, 22 AWG
CONNECTOR	MTA-100 AMP, OR ANY 6-PIN

DIMENSIONS ARE IN INCHES TOLERANCES: ANGULAR: ±1° ONE DECIMAL: X.X ±.1 TWO DECIMAL: X.XX ±.015 THREE DECIMAL: X.XXX ±.005		NAME	DATE	 TITLE: SHUTTER, LST4WBK, LST4WBK2 STD SIZE DWG. NO. REV B LST4WBK2 B SCALE: 3:2 SHEET 2 OF 2
	DRAWN	B.L.	12/02/19	
	CHECKED	M.K.	12/06/19	
	ENG APPR.	B.L.	12/12/19	
	MFG APPR.			
Q.A.				
3RD ANGLE PROJECTION				
DO NOT SCALE DRAWING				

PROPRIETARY AND CONFIDENTIAL
THE DESIGN INFORMATION CONTAINED HEREIN IS THE SOLE PROPERTY OF NM LASER PRODUCTS, INC. THE DISCLOSURE OF THIS INFORMATION DOES NOT CONSTITUTE THE RELEASE OF THE PROPRIETARY RIGHTS THEREOF, BUT IS TO BE USED FOR INFORMATION PURPOSES ONLY WHEN NECESSARY. PERMISSION TO REPRODUCE THIS INFORMATION OF THE PRODUCT DESCRIBED HERE IN MUST BE OBTAINED IN WRITING FROM NM LASER PRODUCTS, INC.