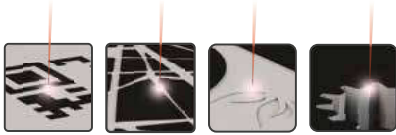


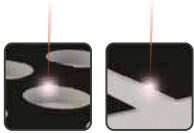
# LS3

## The ultra-compact machine

The LS3 has been specifically designed for micromachining applications in an industrial environment and integrates our complete range of laser sources. It is a compact, robust, modular and flexible machine thanks to its multiple options that allows micromachining applications with high quality.



MARKING    TEXTURING    ENGRAVING    CUTTING



DRILLING    THIN FILM REMOVAL



LS3

### Main specifications

MACHINE	LS3 BASIC	LS3 MOTION
Mechanical axis	Z (200 mm)	XYZ (300 x 300 x 200 mm)
Femtosecond laser source	5 to 40 W	
Scanner	LS-Scan XY	
Dimensions of the working table	575 x 430 mm	-
Software	KYLA™ 2D and EasyKYLA	
Vision	Visualization and positioning camera	
Assistance for laser focus	Dual laser guide	
Table	Marble	
Door	Manual	

### ACCURACY / REPEATABILITY

XY axis (per axis)	-	A +/- 25 µm    R +/- 5 µm
--------------------	---	---------------------------

### Options

#### LASER SOURCES

Picosecond	30 W	
Nanosecond	10 to 100 W	

#### ROTARY AXIS

C Axis	n x 360°	-
A (or B) Axis	+/- 120°	-

#### LS-MODULES

3D Scanner	3D Module of the scanner (KYLA™ 3D included)	
Vision through the scanner	LS-View	
Beam management module	LS-Shape	

#### OTHER

Vision	-	Cognex camera, shape recognition
Metrology	-	Optical profilometry (confocal sensor)
Autofocus	Laser distance sensor	
Door	Automatic	
Accessories	Power meter, fume extractor, cutting nozzle, rotary table	

### Dimensions

Width x Depth x Height	1200 x 1310 x 1950 mm	
------------------------	-----------------------	--

- - Not available in this configuration