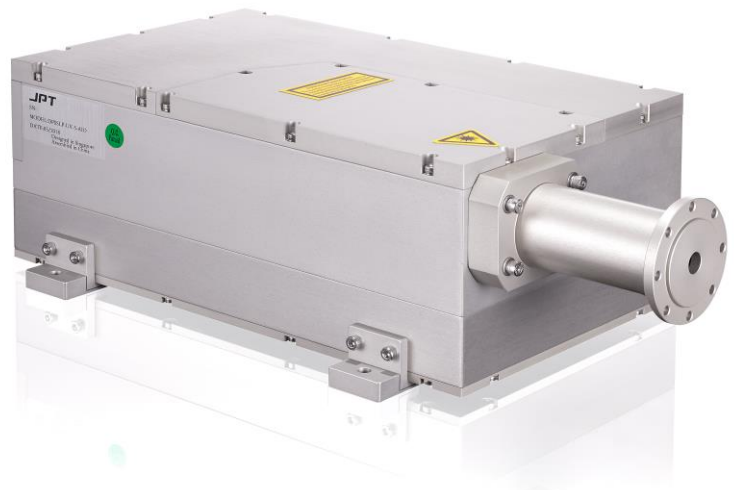


LP-GR-7-A10

- **DPSS Technology**
- **Compact Design (ALL-In-One)**
- **High Power Stability**
- **Very Competitive Price**



TECHNICAL SPECIFICATIONS:

LP-GR-7-A10

Central Wavelength	532 nm
Nominal Output Power	> 7 W @ 40 kHz
Beam Quality	$M^2 < 1.2$
Beam Divergence	≤ 2.5 mrad
Pulse Frequency Range	20 – 200 kHz
Pulse Width	< 15 ns @ 40 kHz
Output Beam Diameter ¹	0.7 ± 0.1 mm
Beam Roundness	> 90%

Pulse Stability	< 3% rms
Average Power Instability	$\pm 3\%$ over 24h
Polarization Ratio	100:1
Cooling Method	Water
Operating Voltage	AC 220V
Operation Temperature	0 – 40 °C
Storage Temperature	-20 – 50 °C

¹ Optional equipped with 6x, 8x or 10x Beam Expander

Manufacturer:

JPT
SHENZHEN JPT OPTO-ELECTRONICS CO., LTD