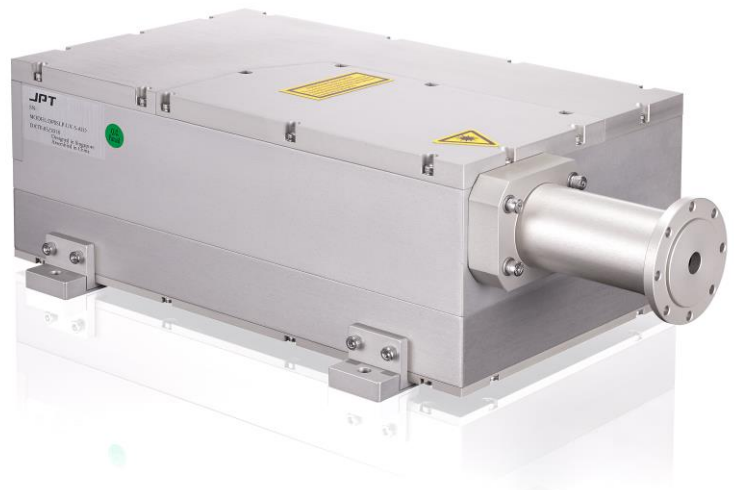


# LP-GR-10-A10

- DPSS Technology
- Compact Design (All-In-One)
- High Power Stability
- Very Competitive Price



## TECHNICAL SPECIFICATIONS:

### LP-GR-10-A10

Central Wavelength	532 nm
Nominal Output Power	> 10 W @ 40 kHz
Beam Quality	$M^2 < 1.2$
Beam Divergence	$\leq 2.5$ mrad
Pulse Frequency Range	20 – 200 kHz
Pulse Width	< 15 ns @ 40 kHz
Output Beam Diameter <sup>1</sup>	0.7 ± 0.1 mm
Beam Roundness	> 90%

Pulse Stability	< 3% rms
Average Power Instability	± 3% over 24h
Polarization Ratio	100:1
Cooling Method	Water
Operating Voltage	AC 220V
Operation Temperature	0 – 40 °C
Storage Temperature	-20 – 50 °C

<sup>1</sup> Optional equipped with 6x, 8x or 10x Beam Expander

Manufacturer:

