

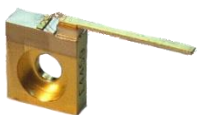
# LDX Optronics Inc.

## 900nm-1850nm Laser Diodes – Free Space

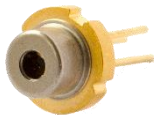
Part Number	Wavelength (nm)	Output Power (mW)	Emitter Size (um)	Operating Temp (°C)	Threshold Current (mA) Typ.	Operating Current (mA) Typ.	Operating Voltage (V) Typ.	Beam Divergence (FWHM)		Spectral Width (FWHM)	Polarization
								$\theta_{//}$ (°)	$\theta_{\perp}$ (°)		
LDX-3210-900	900 ±5 nm	2,000	100	20	200	2100	1.9	7	44	2	TE
LDX-3310-915	915 ±10 nm	3,000	100	20	250	2800	1.8	7	26	2	TE
LDX-3515-915	915 ±10 nm	5,000	150	20	400	5000	1.9	7	26	2	TE
LDX-3310-940	940 ±10 nm	3,000	100	20	250	2800	1.8	7	26	2	TE
LDX-3515-940	940 ±10 nm	5,000	150	20	400	5000	1.8	7	26	2	TE
LDX-3105-980	980 ±10 nm	1,500	50	20	200	1900	1.8	7	26	2	TE
LDX-3310-980	980 ±10 nm	3,000	100	20	250	3400	1.8	7	26	2	TE
LDX-3515-980	980 ±10 nm	5,000	150	20	400	5000	1.8	7	26	2	TE
LDX-3105-1064	1064 ±10 nm	1,500	50	25	500	1900	1.4	7	38	3	TE
LDX-3310-1064	1064 ±10 nm	3,000	100	20	300	3700	1.4	7	38	3	TE
LDX-3515-1064	1064 ±10 nm	5,000	150	20	500	7000	1.8	7	38	3	TE
LDX-3105-1120	1120 ±20 nm	1,200	50	20	250	2000	1.7	7	28	2	TE
LDX-3210-1120	1120 ±20 nm	2,500	100	20	300	4000	1.7	7	28	2	TE
LDX-3415-1120	1120 ±20 nm	4,000	150	20	450	6500	1.7	7	28	2	TE
LDX-3105-1210	1210 ±10 nm	1,200	50	20	900	4200	1.5	7	28	3	TE
LDX-3210-1210	1210 ±10 nm	2,000	100	20	900	7500	1.5	7	28	3	TE
LDX-3115-1350	1350 ±20 nm	1,500	150	20	900	7000	1.4	7	38	4	TE
LDX-3310-1350	1350 ±20 nm	3500	100	20	320	6600	1.55	7	38	7	TE
LDX-3510-1350	1350 ±20 nm	5000	100	20	450	10800	1.55	7	38	8	TE
LDX-3209-1450	1450 ±20 nm	2500	95	20	500	4900	1.7	8	30	8	TE
LDX-3509-1470	1470 ±20 nm	5,000	95	20	500	9000	1.5	8	30	8	TE
LDX-3715-1470	1470 ±20 nm	7,000	150	20	800	16000	1.5	8	30	8	TE
LDX-3820-1470	1470 ±20 nm	8,000	200	20	800	18000	1.6	8	30	8	TE
LDX-3925-1470	1470 ±20 nm	9,000	250	20	800	21500	1.4	8	30	8	TE
LDX-2803-1550	1550 ±20 nm	800	35	20	800	3000	1.3	8	30	8	TE
LDX-3105-1550	1550 ±20 nm	1,000	50	20	800	3800	1.3	8	30	8	TE
LDX-3209-1550	1550 ±20 nm	2,500	95	20	500	6000	1.5	8	30	8	TE
LDX-3309-1550	1550 ±20 nm	3,500	95	20	500	9000	1.5	8	30	9	TE
LDX-3110-1550	1550 ±20 nm	1,200	100	20	800	5500	1.2	8	30	8	TE
LDX-3210-1550	1550 ±20 nm	2,000	100	20	800	9000	1.2	8	30	8	TE
LDX-3518-1550	1550 ±20 nm	5,000	180	20	800	14000	1.3	8	30	8	TE
LDX-2815-1620	1620 ±20 nm	800	150	20	900	5100	1.1	7	40	6	TE
LDX-3110-1850	1850 ±30 nm	1,000	100	20	400	5000	1.2	6	40	8	TE

### Standard Free Space Package Options:

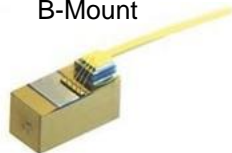
C-mount



9.0mm



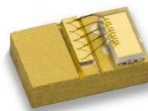
B-Mount



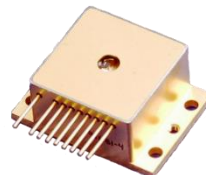
TO-3 Package



Q-mount



HHL Package



Chip on Substrate (COS)



For Additional Information Contact:



203 Joseph St. O'Fallon, Mo 63366  
Phone: (636) 272-7227; fax (636) 272-3909

[diodes@rpmclasers.com](mailto:diodes@rpmclasers.com) [www.rpmclasers.com](http://www.rpmclasers.com)

Revised:  
6/6/2018

