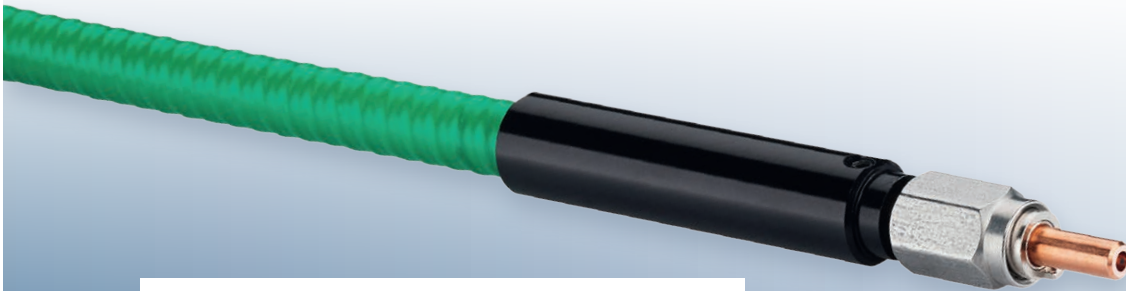


# FiberTech® LD-80 laser cables



CLS□□□□IR08/08.5gr30/30-□□□□cm100

## Description

Laser cable with LD-80 freestanding fiber connectors and PVC coated steel-armored protection tube. Copper based high-accuracy fiber ferrule for effective heat removal and high fiber centricity. Applicable for laser beam delivery of up to 800 W.

## Properties / Composition

- VIS-IR all-silica (silica/silica) step-index fiber with NA = 0.22  
NA = 0.12 on request  
Graded-index fiber on request
- Ø 4 mm x 10 mm connectors with key (anti-twist), free-standing fiber tip, hex nut
- All copper alloy parts for improved heat removal
- Fiber centricity < 5 µm fiber core to ferrule
- Squarelock, green PVC-coated protection tube
- Metal connector cuffs to cable
- Electrical isolation from end to end
- Average laser power up to 800 W

Fiber core Ø [µm]	Cable length [m]	Type designation	Order no.
100	2	CLS0100IR08/08.5gr30/30-0200cm100	FCL30-10200-2000
200		CLS0200IR08/08.5gr30/30-0200cm100	FCL30-20200-2000
400		CLS0400IR08/08.5gr30/30-0200cm100	FCL30-40200-2000
600		CLS0600IR08/08.5gr30/30-0200cm100	FCL30-60200-2000
800		CLS0800IR08/08.5gr30/30-0200cm100	FCL30-80200-2000
1000		CLS1000IR08/08.5gr30/30-0200cm100	FCL30-90200-2000
100	3	CLS0100IR08/08.5gr30/30-0300cm100	FCL30-10300-2000
200		CLS0200IR08/08.5gr30/30-0300cm100	FCL30-20300-2000
400		CLS0400IR08/08.5gr30/30-0300cm100	FCL30-40300-2000
600		CLS0600IR08/08.5gr30/30-0300cm100	FCL30-60300-2000
800		CLS0800IR08/08.5gr30/30-0300cm100	FCL30-80300-2000
1000		CLS1000IR08/08.5gr30/30-0300cm100	FCL30-90300-2000
100	5	CLS0100IR08/08.5gr30/30-0500cm100	FCL30-10500-2000
200		CLS0200IR08/08.5gr30/30-0500cm100	FCL30-20500-2000
400		CLS0400IR08/08.5gr30/30-0500cm100	FCL30-40500-2000
600		CLS0600IR08/08.5gr30/30-0500cm100	FCL30-60500-2000
800		CLS0800IR08/08.5gr30/30-0500cm100	FCL30-80500-2000
1000		CLS1000IR08/08.5gr30/30-0500cm100	FCL30-90500-2000