

Laserglow Product Datasheet

LBS-532 Brightline Pro Complex Pattern Projecting Laser Laserglow Part Number: BOG005260



Similar Products:

For information about the other lasers in this product family visit:

<http://www.laserglow.com/BOG>

Ordering:

Order Online Now or Request Quote:

<http://www.laserglow.com/BOG005260>

Series Specifications:

Nominal Wavelength	532 nm
Output Type	CW
Laser Source Type	DPSS



Overview:

Key Features:

- *Starting at: \$379*
- *Output Power:* 5 mW to >40 mW
- *Expected Life:* 3000-5000 hours
- *Projection Type:* Parallel lines, Circles, Grids (of lines or dots), and Aiming Reticles (a circle with a cross overlaid)
- *Key Feature:* Projects a highly visible focus-adjustable green laser image for high precision applications.
- *Minimum achievable line thickness:* 0.25 mm at 30 cm
- *Package Includes:* Alignment laser mounted in block (mounting bracket and power supply optional)
- *Casing:* Machined Aluminum
- *Line Straightness:* Better than 0.1% over full length

Specifications:

This spec sheet has been generated specifically for part number BOG005260, per your request, and data for the entire series is also displayed for your reference. The specs which are specific to BOG005260 have been highlighted below in **red + bold**.

Laser Form Factor	B1	B7
Output Power (mW)	<5, 20	40
Output Power Stability (%RMS/4h)	<20	<20
FDA Safety Class	IIIb	IIIb
IEC Safety Class	2, 3R	3R
Central Wavelength (nm)	531.65	531.65
Projection Type (See below for detail)	25 Parallel Lines (DOE #254) 5 Concentric Circles (DOE #259) 5 Parallel Lines (DOE #252) Circle of 72 Dots (DOE #221) Circle with Central Dot (DOE #219) Grid of Dots 51x51 (DOE #257) Grid of Squares 50x50 (DOE #256) Reticle (DOE #260) Reticle of Dots (DOE #261)	25 Parallel Lines (DOE #254) 5 Concentric Circles (DOE #259) 5 Parallel Lines (DOE #252) Circle of 72 Dots (DOE #221) Circle with Central Dot (DOE #219) Grid of Dots 51x51 (DOE #257) Grid of Squares 50x50 (DOE #256)
Projection Fan Angle (°, full angle)	4, 14, 16 , 17, 20, 23, 27	14, 17, 20, 23, 27
Divergence (mrad, full angle)	<0.1	<0.1
Beam Diameter (mm, 1/e ²)	4	4
Minimum Achievable Beam Diameter	0.25 mm at 0.3 m	0.25 mm at 0.3 m
Transverse Mode	Near TEM00	Near TEM00
Longitudinal Modes	Multiple	Multiple
Operating Temperature Range (°C)	10 to 35	10 to 35
Storage Temperature Range (°C)	-10 to 50	-10 to 50
Max. TTL Modulation Freq. (Hz)	200	200
Modulation Input Signal	0-5 VDC	0-5 VDC
Total Power Consumption (W)	2	3
Max. Power Input Duty Cycle	100%	100%
Cooling Method	Passive Air	Passive Air
Standard Warranty (months)	6	6
MTTF (operational hours)	5000	5000
Weight of Laser Head (kg)	0.1	0.26
Laser Head Dimensions (mm)	80 (l) x 20 (d)	90 (l) x 36 (d)

CW: All specifications are based on performance at full output power and after the specified warmup period. Output characteristics may change if the laser is run at a different power level.


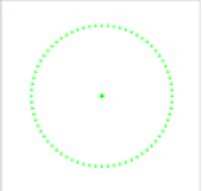


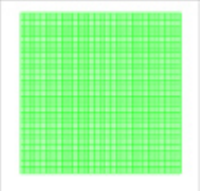
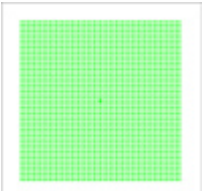



Q-Switched: Specifications are based on the laser pulsing at the specified design frequency. Output characteristics may change if the laser is run at a different frequency.

Power Supply Options:

The Brightline series of alignment lasers accept direct DC input of 3.0 VDC. The power connector is a standard EIAJ-04 DC power plug. (5.5 mm outer diameter, center pole positive.) If you do not want to provide DC current directly, we recommend that you use our AC power supply. The model number for the standard North American AC Power Supply is ABP00AXXX and you can find complete details here: www.laserglow.com/ABP. The dimensional drawing for the standard power supply is included on page 5 for your reference.

Projection Types:

The folowing projection types are available for this laser series.

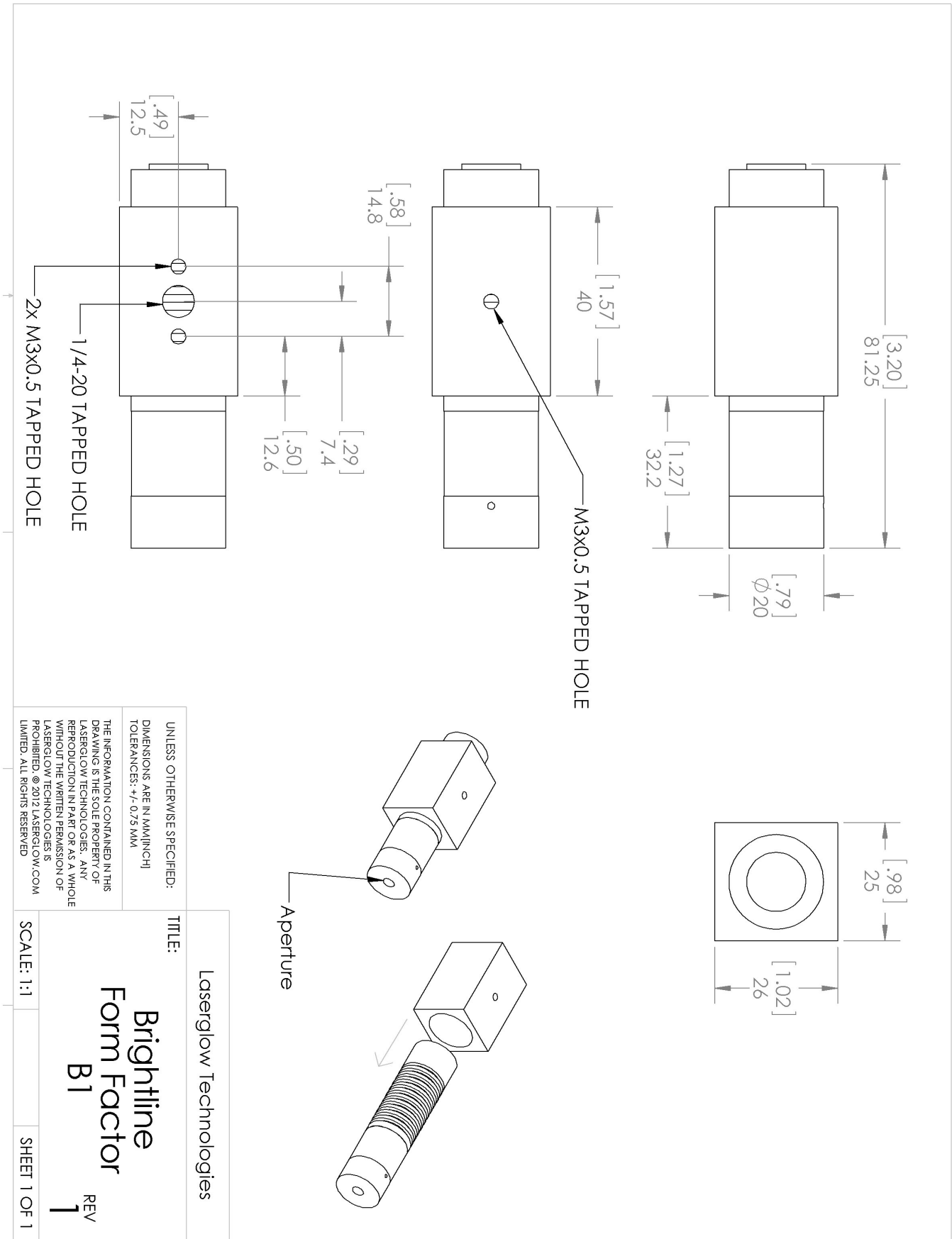
 <p>Circle with Central Dot (DOE #219)</p>	 <p>Circle of 72 Dots (DOE #221)</p>	 <p>5 Parallel Lines (DOE #252)</p>	 <p>25 Parallel Lines (DOE #254)</p>	 <p>Grid of Squares 50x50 (DOE #256)</p>
 <p>Grid of Dots 51x51 (DOE #257)</p>	 <p>5 Concentric Circles (DOE #259)</p>	 <p>Reticle (DOE #260)</p>	 <p>Reticle of Dots (DOE #261)</p>	

Regulatory Classification:

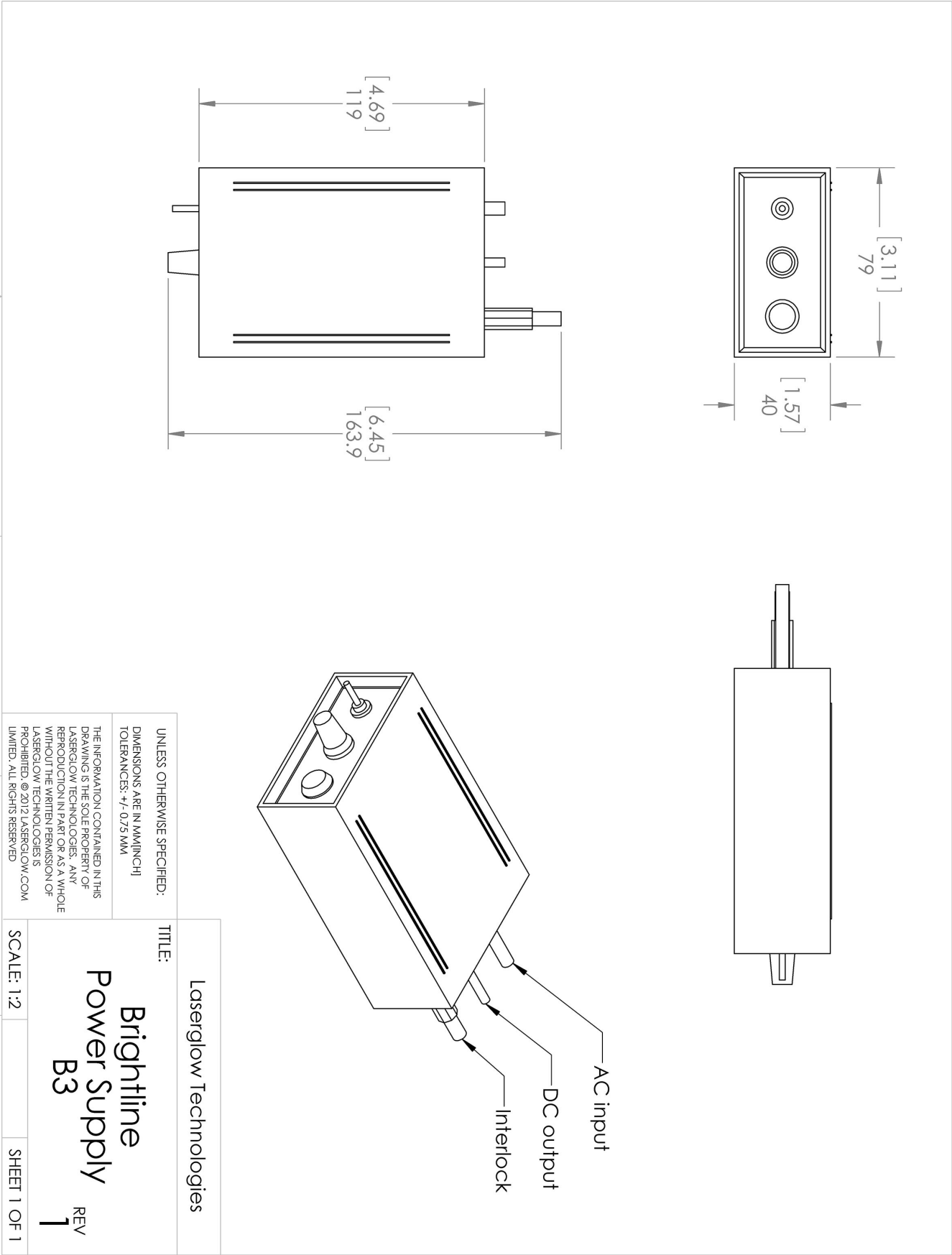
The model you have selected (BOG005260) requires the following safety label(s):



Dimensional Drawing - Laser Form Factor: B1:







Dimensional Drawing - Power Supply Form Factor: B3:



Accessories:

The most popular accessories for model BOG005260 are shown below. For additional details regarding these or other accessories please see our website or contact us directly.

Part Number	Description	
 ABP00AXXX	ABP-N.American Brightline AC Power Supply (80-260 VAC, N. American plug) Full Details: www.laserglow.com/ABP	Included With Laser
 ABP00EXXX	ABP-European Brightline AC Power Supply (80-260 VAC, European Plug) Full Details: www.laserglow.com/ABP	Included With Laser
 ABB000XXX	ABB-standard Brightline Standard Mounting Bracket Full Details: www.laserglow.com/ABB	Included With Laser
 ADB000XXX	ADB-deluxe Brightline Deluxe Mounting Bracket Full Details: www.laserglow.com/ADB	

FOR MORE INFORMATION PLEASE CONTACT:

LASERGLOW TECHNOLOGIES
873 St. Clair Ave West, Toronto, ON, Canada M6C1C4
Tel. (416) 729-7976 Fax (480) 247-4864
sales@laserglow.com www.laserglow.com

E&OE: Data included in this sheet may be subject to change without notice.

Please confirm critical specifications with our staff prior to ordering.