

## Laserglow Product Datasheet

### LBD-660 Brightline Pro Line- Projecting Laser Laserglow Part Number: BLP0053XX



#### Similar Products:

For information about the other lasers in this product family visit:

<http://www.laserglow.com/BLP>

#### Ordering:

Order Online Now or Request Quote:

<http://www.laserglow.com/BLP0053XX>

#### Series Specifications:

Nominal Wavelength	660 nm
Output Type	CW
Laser Source Type	Diode



#### Overview:

#### Key Features:

- *Starting at: \$209*
- *Output Power:* 5 mW to >40 mW
- *Expected Life:* 3000-5000 hours
- *Projection Type (dot/line/cross):* Line
- *Key Feature:* Projects a focus-adjustable red line for high precision applications.
- *Minimum achievable line thickness:* 0.5 mm at 30 cm
- *Package Includes:* Alignment laser mounted in block (mounting bracket and power supply optional)
- *Casing:* Machined Aluminum
- *Line Straightness:* Better than 0.1% over full length

## Specifications:

This spec sheet has been generated specifically for part number BLP0053XX, per your request, and data for the entire series is also displayed for your reference. The specs which are specific to BLP0053XX have been highlighted below in **red + bold**.

Laser Form Factor	<b>B3</b>
Output Power (mW)	<b>&lt;5</b> , 25, 40
Output Power Stability (%RMS/4h)	<b>&lt;20</b>
FDA Safety Class	<b>IIIb</b>
IEC Safety Class	<b>2</b> , 3R
Projection Type (See below for detail)	<b>Line (Cylindrical Lens CYL)</b> Line (DOE #227) Line (DOE #266) Line (DOE #283) Line (DOE #287) Line of 11 dots (DOE #281) Line of 5 dots (DOE #263)
Projection Fan Angle (°, full angle)	5, 6, 10, 17, 18, 21, 22, <b>30</b> , 50, 70, 75, 100
Divergence (mrad, full angle)	<b>&lt;0.3</b>
Beam Dimensions (mm, 1/e <sup>2</sup> )	<b>ø7</b>
Minimum Achievable Beam Diameter	<b>0.5 mm at 0.3 m</b>
Transverse Mode	<b>Near TEM00</b>
Longitudinal Modes	<b>Multiple</b>
Operating Temperature Range (°C)	<b>-10 to 40</b>
Storage Temperature Range (°C)	<b>-10 to 50</b>
Max. TTL Modulation Freq. (Hz)	<b>200</b>
Modulation Input Signal	<b>0-5 VDC</b>
Total Power Consumption (W)	<b>1</b>
Max. Power Input Duty Cycle	<b>100%</b>
Cooling Method	<b>Passive Air</b>
Standard Warranty (months)	<b>6</b>
MTTF (operational hours)	<b>5000</b>
Weight of Laser Head (kg)	<b>0.1</b>
Laser Head Dimensions (mm)	<b>73 (l) x 20 (d)</b>

CW: All specifications are based on performance at full output power and after the specified warmup period. Output characteristics may change if the laser is run at a different power level.

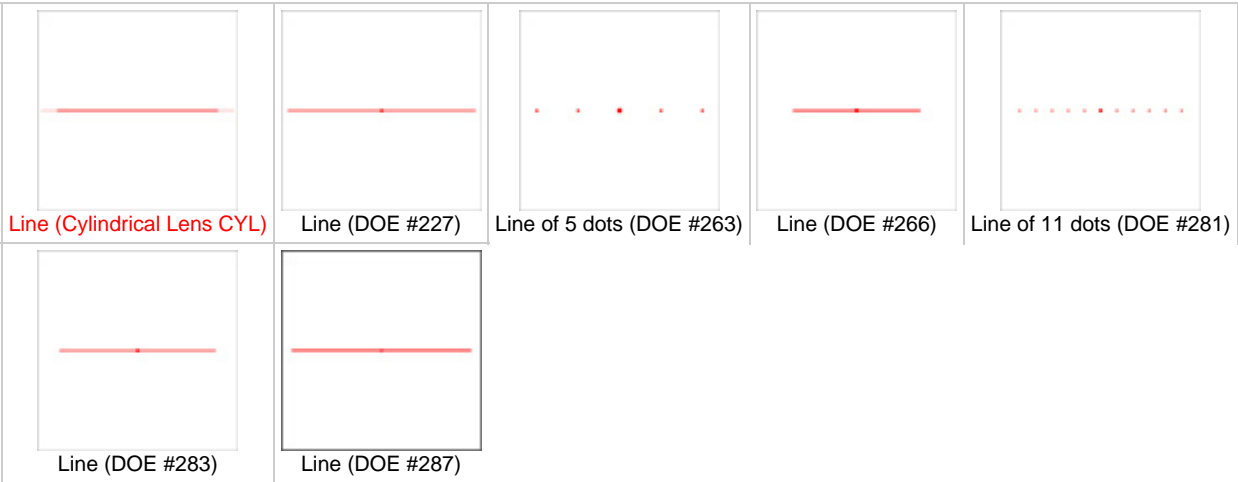
Q-Switched: Specifications are based on the laser pulsing at the specified design frequency. Output characteristics may change if the laser is run at a different frequency.

**Power Supply Options:**

The Brightline series of alignment lasers accept direct DC input of 3.0 VDC. The power connector is a standard EIAJ-04 DC power plug. (5.5 mm outer diameter, center pole positive.) If you do not want to provide DC current directly, we recommend that you use our AC power supply. The model number for the standard North American AC Power Supply is ABP00AXXX and you can find complete details here: [www.laserglow.com/ABP](http://www.laserglow.com/ABP). The dimensional drawing for the standard power supply is included on page 5 for your reference.

**Projection Types:**

The folowing projection types are available for this laser series.

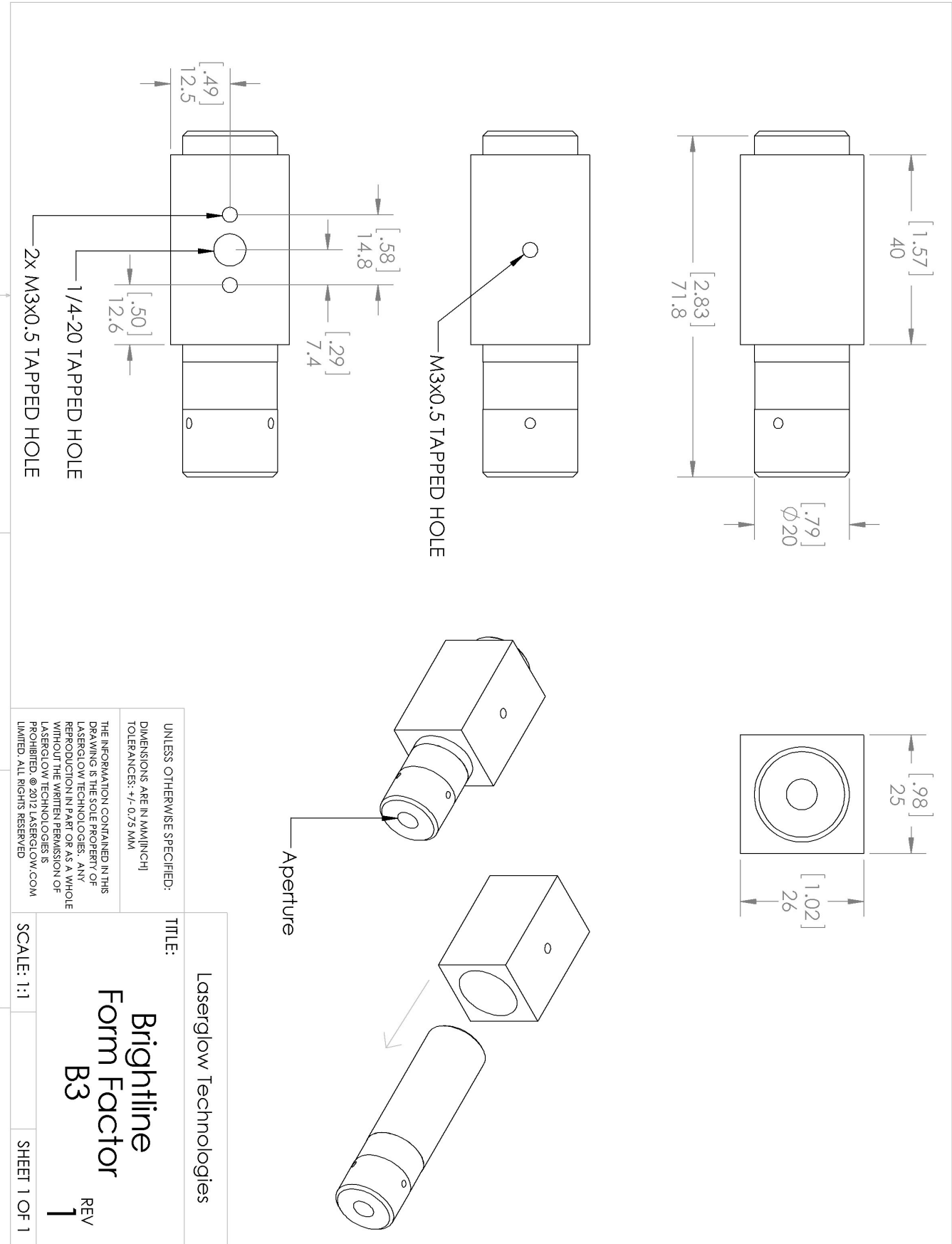


**Regulatory Classification:**

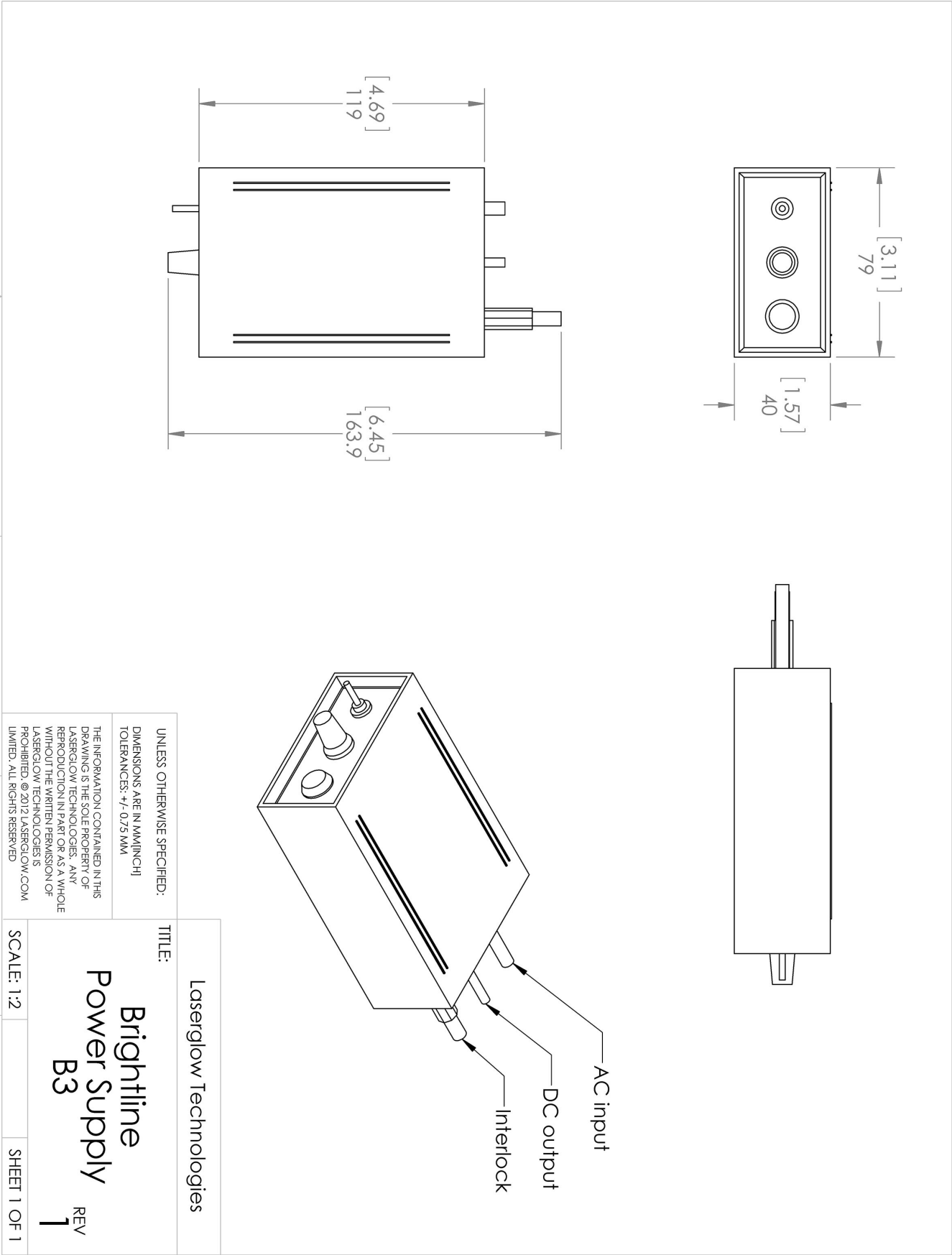
The model you have selected (BLP0053XX) requires the following safety label(s):



Dimensional Drawing - Laser Form Factor: B3:







Dimensional Drawing - Power Supply Form Factor: B3:



## Accessories:

The most popular accessories for model BLP0053XX are shown below. For additional details regarding these or other accessories please see our website or contact us directly.

Part Number	Description	
 ABB000XXX	ABB-standard Brightline Standard Mounting Bracket Full Details: <a href="http://www.laserglow.com/ABB">www.laserglow.com/ABB</a>	Included With Laser
 ADB000XXX	ADB-deluxe Brightline Deluxe Mounting Bracket Full Details: <a href="http://www.laserglow.com/ADB">www.laserglow.com/ADB</a>	
 ABP00AXXX	ABP-N.American Brightline AC Power Supply (80-260 VAC, N. American plug) Full Details: <a href="http://www.laserglow.com/ABP">www.laserglow.com/ABP</a>	Included With Laser
 ABP00EXXX	ABP-European Brightline AC Power Supply (80-260 VAC, European Plug) Full Details: <a href="http://www.laserglow.com/ABP">www.laserglow.com/ABP</a>	Included With Laser

## FOR MORE INFORMATION PLEASE CONTACT:

LASERGLOW TECHNOLOGIES  
873 St. Clair Ave West, Toronto, ON, Canada M6C1C4  
Tel. (416) 729-7976 Fax (480) 247-4864  
[sales@laserglow.com](mailto:sales@laserglow.com) [www.laserglow.com](http://www.laserglow.com)

E&OE: Data included in this sheet may be subject to change without notice.

Please confirm critical specifications with our staff prior to ordering.