

Dome Lights

LAV series

Refer to our website for product details.

CCS LAV

Search



You can also use your smartphone or cell phone.

For quick access.

Provides diffused light evenly using a mechanism that combines a diffused lighting and a coaxial lighting

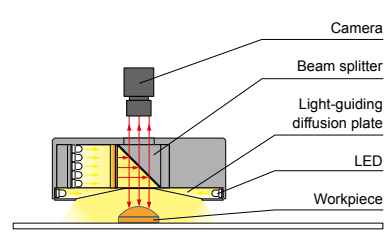


Applications Faulty plating inspection, inspection of a sealed target, inspection for foreign material attached to a glossy surface, character recognition and text inspection of glossy surfaces, dimension measuring of electronic parts, etc.

Features

This Light Unit combines diffused lighting and a coaxial lighting. It can evenly perform uniform illumination for glossy, curved workpieces.

Example configuration (LAV-80)



Imaging example: Exterior imaging of connector pins

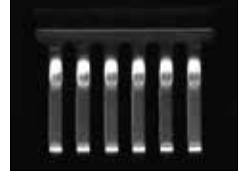


Workpiece: Connector pin

We accept custom orders. Please feel free to inquire.

- Shape modifications
- Brightness increases
- Changes in wavelength, etc.

LED Ring Light



It is difficult to illuminate the whole thing evenly to form an image of the exterior.

LAV-80RD2



It is possible to illuminate the whole thing evenly to form an image of the exterior.

Lineup

Model name	LED color	Power consumption	Peak wavelength/ correlated color temperature	Options	Extension cables	Recommended Control Units	Weight
LAV-80RD2	Red	24 V / 3.6 W	630 nm	-	FCB*2 Straight Cable	PD3 POD*1	190 g
LAV-80SW2	White		5,500 K		FCB-F 4-branch Cable		
LAV-80BL2	Blue		470 nm		FCB-W 2-branch Cable		
LAV-80GR2	Green		525 nm		FRCB Robot Cable		

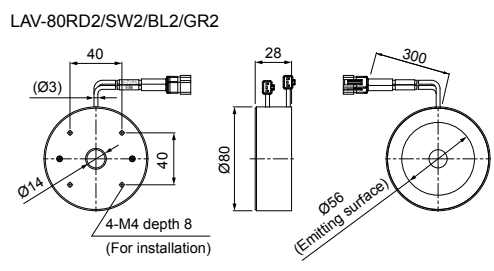
LED Properties: Spectral Distribution ▶ P.306 Extension Cables ▶ P.296 Control Unit Selection Guide ▶ P.243 List of Control Unit Specifications ▶ P.245

Use a 2-channel Control Unit.

*1: For information on the combination of Light Units and POD-series Control Unit, please refer to our website. <http://www.ccs-grp.com/lnk/qr/pod>

*2 The cables with a model name that ends with "-ME7" or "-EL2" are not included.

Dimensions (mm)



The emitting surface for the LAV-80SW2/BL2/GR2 is Ø54.

Illumination part	Power consumption
Coaxial illumination part	Red: 1.0 W White/Blue/Green: 1.6 W
Diffused illumination part	Red: 2.6 W White/Blue/Green: 3.4 W

If adjusting the intensity for each part separately, use a 2-channel Control Unit.

You can change the connectors of the Light Unit cable. Choose between M12 connectors and flying leads. Refer to P.5 for details.

- Direct Lighting: LDR2, LDR2-LA, LDR-LA1, SQR, SQR-TP, HPR2, LFR, LKR, FPR, FPQ2, LDL2, LDLB, HLDL2
- Diffused Lighting: LFL, HPD2, LDM2, LAV, PDM, LFX3, LFX3-PT, LFX2, LFX3
- Coaxial Lighting: MSU, MFU
- Stroke Lighting: PF
- Water-proof: HLDL-IP/ IQ/HSL-PCL
- Ultraviolet Lighting: UV2, UV, LN-SP-UV-FN
- Infrared Lighting: IR2
- Control: IU
- Spot Lighting, Etc.: HL2, LV, LSP, HFS/HFR, HL2-NR, HL2-3M-RGB-3W, PFB, PFB2
- Convergent Lighting: LNLP, LN-SP2, LN-SP, LN-SP-FN, LN/LN-HK
- Diffused Lighting: LN-SD, LN-D2, LN-D, LN-LT, LN-V/HLDN, LN-DG, LN-IS2, LN-IS, LN-IS-FN
- Lenses: Telecentric Lens, Macro Lens

Various technical documents available.

- PDF Drawings
- DXF Drawings
- 3D CAD
- Instruction Guides
- Product Filers
- Imaging Samples
- Data Sheets
- Examples of Custom Ordered Products

Download here. <http://www.ccs-grp.com/dl/>