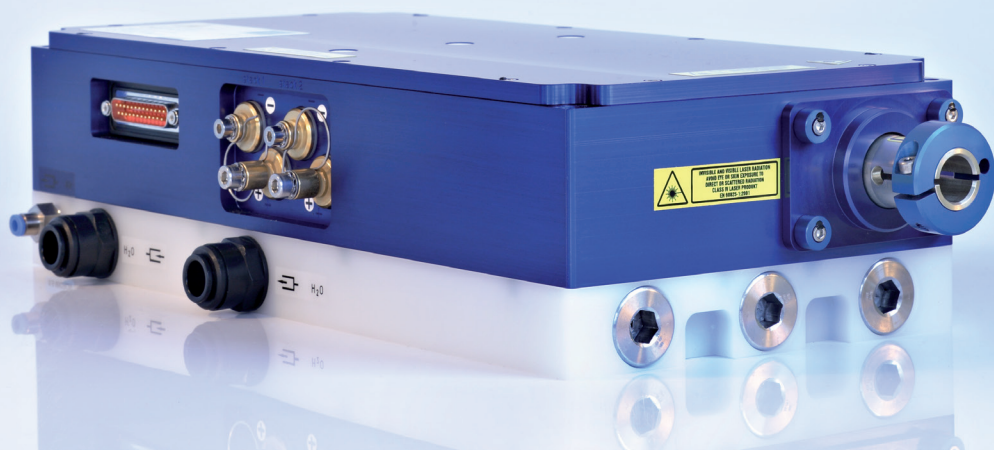




Fiber-Coupled Diode Laser Stacks

cw, actively cooled with deionized water



JOLD-250-CAXF-6P2

Design 211620126

Features:

- High optical output power of 250 W cw
- Fiber core diameter: 600 μm (NA 0.22)
- Integrated pilot laser and power monitor
- Lifetime > 10,000 h, high reliability

Applications:

- Pumping of solid-state lasers and fiber lasers
- Material processing

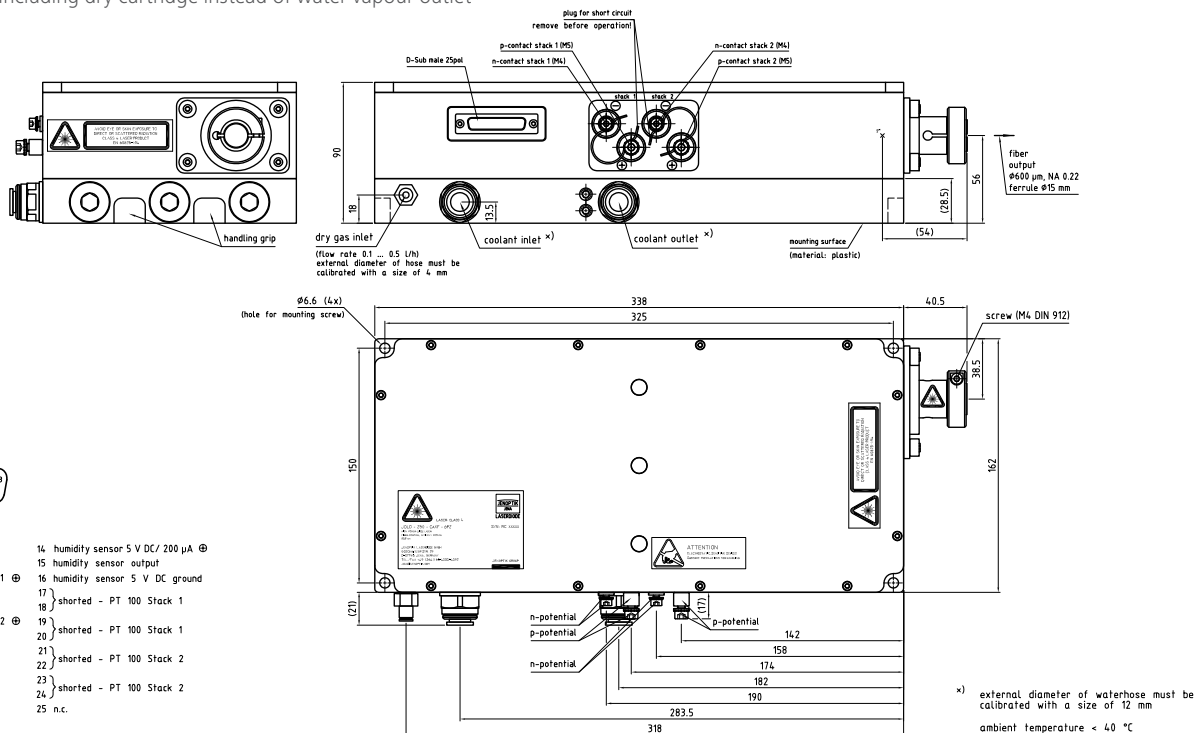
Fiber-Coupled Diode Laser Stacks

cw, actively cooled with deionized water

Specifications (Start of Life)

Product	JOLD-250-CAXF-6P2, Design 211620126				
Operation Mode	cw, power modulation only between threshold and maximum current				
Maximum Optical Output Power	250	250	250	250	W
Center Wavelength at 25 °C	807	915	938	976	nm
Center Wavelength Variation at 25 °C	5	5	5	3	nm
Typical Spectral Bandwidth (FWHM)	5	6	6	6	nm
Maximum Spectral Bandwidth (FWHM)	6	7	7	7	nm
Typical Operation Current	40	42	42	44	A
Maximum Operation Current	45	47	47	47	A
Typical Threshold Current	7	6	6	6	A
Maximum Threshold Current	10	9	9	9	A
Typical Slope	7.6	7.0	7.0	6.6	W/A
Minimum Slope	6.5	6.0	6.0	6.0	W/A
Maximum Operating Voltage	26 (2x13)	26 (2x13)	26 (2x13)	26 (2x13)	V
Fiber Core Diameter, Numerical Aperture	600 µm, NA 0.22				
Fiber Connection	High-power plug with 15 mm ferrule diameter				
Power Monitor	Infineon, SFH 229				
Pilot Laser	0.5 ... 3 mW, 650 nm ± 15 nm, 3 ... 5 V, 40 ± 15 mA, power not adjustable (only for teaching and targeting purposes before laser operation)				
Anode, Cathode Connectors	2x M5, 2x M4 (e.g. socket cap screws ISO 4762); see manual				
Humidity Reduction	Purge gas, water vapor outlet closed with membrane				
Purge Gas	Synthetic air, purity > 99.9997 %, flow rate 0.1 ... 0.5 l/h (10 ... 20 mbar pressure), Ref.: www.airliquide.com				
Purge Gas Connector	Ø 4 mm push-in fitting				
Expected Lifetime	> 10,000 h (constant current)				
Cooling:					
Flow Rate	4.6 l/min ± 0.4 l/min				
Water Temperature	15 ... 35 °C				
Water Pressure	400 kPa maximum inlet and outlet pressure, 150 ... 250 kPa pressure drop				
Water Connectors	Ø 12 mm push-in fittings				
Water Quality	Deionized 2 ... 6 µS/cm, mixed bed ion exchanger, particle filter < 25 µm (not included)				
See General User Information!					

Options on request: Including dry cartridge instead of water vapour outlet



JENOPTIK | Healthcare & Industry
 JENOPTIK Laser GmbH
 Goeschwitzer Strasse 29 | 07745 Jena | Germany
 Phone: +49 3641 65-3053 | Fax: +49 3641 65-4011
 E-mail: laser.sales@jenoptik.com | www.jenoptik.com