



NANONICS IMAGING Ltd.



*Correlating Optical  
Super-Resolution  
with AFM*

**Hydra BioAFM™**

*Nanonics, the leading provider of cutting-edge AFM technology, is proud to present its newest breakthrough:*

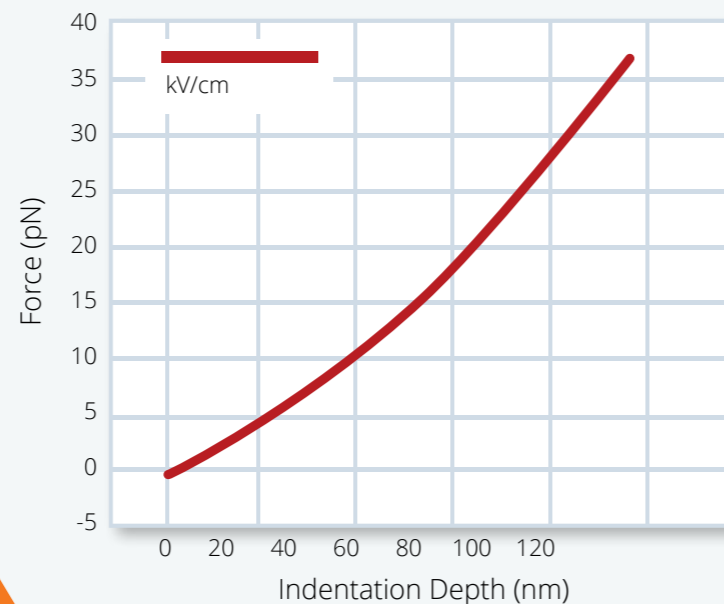
*The Hydra BioAFM™ featuring VISTA™ (Vivid Imaging Soft Touch AFM) mode*

This innovation offers ultrasensitive single pN force mapping combined with the benefits of super-resolution optical/fluorescent imaging.

Imaging of live cells with <100nm optical resolution and direct correlation with AFM topography is now possible. The finest structures, such as microvilli, can now be analyzed with on-line mechanics.

**The Hydra BioAFM™**, with its single or multi-probe capability, allows versatile optical integration with dual microscopes & side illumination.

The system enables Super-resolution methods like STED, PALM, STORM, and live cell NSOM with any available dye.

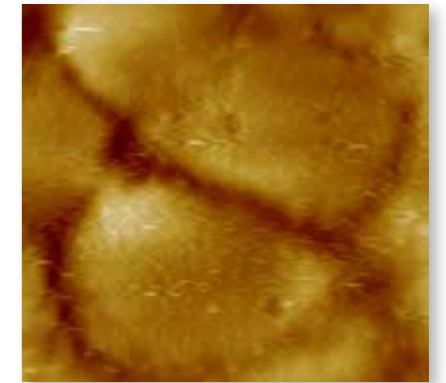


## Imaging Live Cells

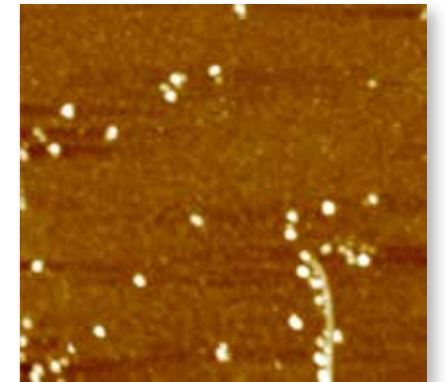
The Hydra BioAFM features VISTA™ (Vivid Imaging Soft Touch AFM) – *enabling the imaging of live cells with the highest resolution.* Combine highest resolution force mapping with controlled and known point of contact.

### VISTA Offers:

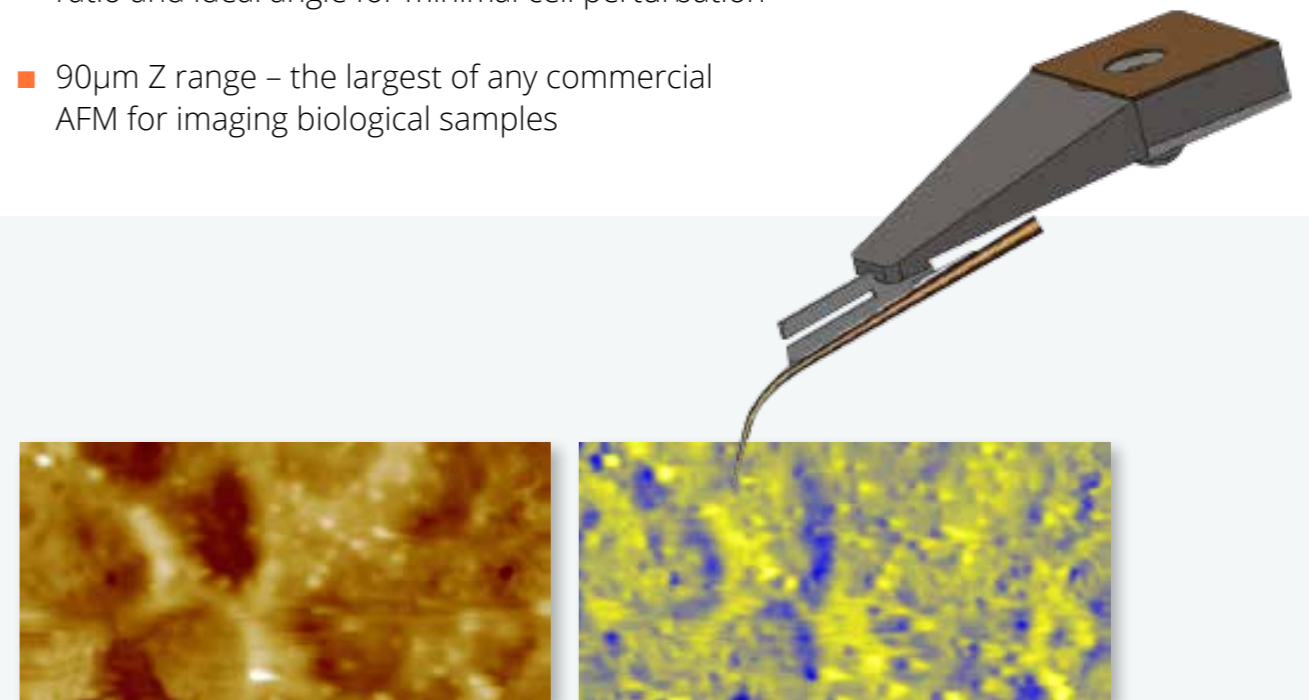
- Imaging of *live cells* with probes exhibiting Q factors in the thousands even in liquid
- Single pN force measurement – the highest force resolution of any commercial AFM
- Force spectroscopy – no Jump to Contact, allowing for investigating surface forces to the last nm from the membrane surface
- Ultralong extended probe tips with large aspect ratio and ideal angle for minimal cell perturbation
- 90µm Z range – the largest of any commercial AFM for imaging biological samples



*Topography of living MDCK cells imaged with Nanonics VISTA showing microvilli*



*DNA decorated with quantum dots*



*AFM topography of living MDCK cells*

*Corresponding modulus map, showing stiffer submembrane regions and softer microvilli*

## True Optical Integration

The Hydra BioAFM is designed for all forms of optical microscopy. The Hydra is the only BioAFM to integrate with either upright or inverted microscopes and dual (4pi) microscopes. Furthermore, side illumination for light sheet microscopy is available. The Hydra BioAFM has rendered obsolete solutions such as shuttling a sample from your AFM back and forth to an upright microscope. All of this is achieved with no compromise in force sensitivity and resolution.

### The Largest Versatility in Optical Configuration:

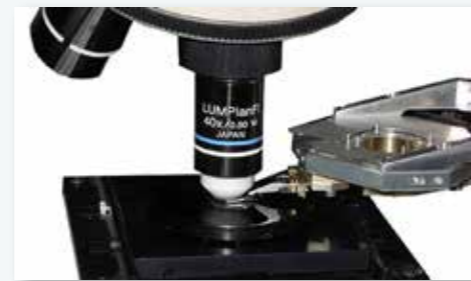
- Upright
- Inverted
- Light sheet side illumination
- Combined 4 pi illumination (dual upright and inverted microscope)
- Brightfield & darkfield
- Phase contrast
- Epifluorescence
- TIRF
- Confocal fluorescence
- Raman and all forms of spectral imaging
- Non linear two, three photon, SHG and STED imaging

### See the Whole Picture

- Highly scattering tissue
- Bacterial cultures in Agar
- Opaque samples, such as microfluidic networks



Extended transparent glass probe with high Q Factor



AFM with online water immersion objective for the highest optical resolution and purity



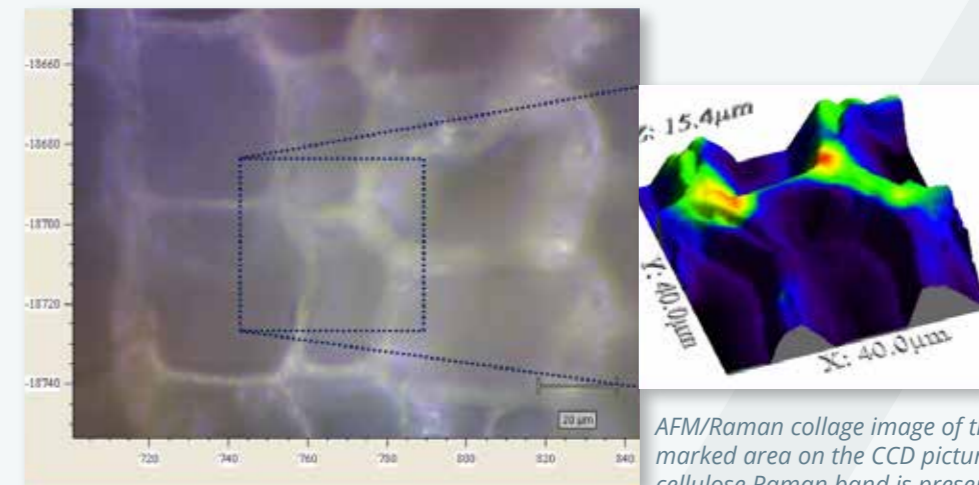
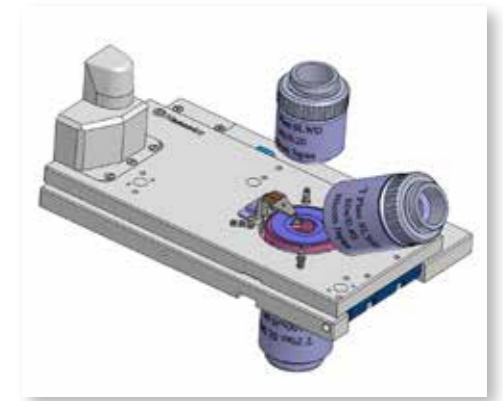
Hydra MultiProbe with two AFM probes integrated with Nanonics Dual Microscope — combined upright and inverted microscopes

## Optical Overlay

Biological research requires a comprehensive view of the sample; by combining multiple perspectives a deeper understanding emerges.

### The Hydra BioAFM features a correlated view:

- AFM overlaid with real-time CCD optical imaging
- Complete optical access combined with glass AFM probes provides for an unobstructed view
- Quick and easy probe-sample placement
- Quick selection of the area of interest for AFM imaging within the CCD image
- Generate beautiful 3D collages, correlating optical view with topographical and force information



AFM Optical Raman imaging of wood cell

AFM/Raman collage image of the marked area on the CCD picture. (The cellulose Raman band is presented by colors overlaid on the 3D topography image of the cell walls.)

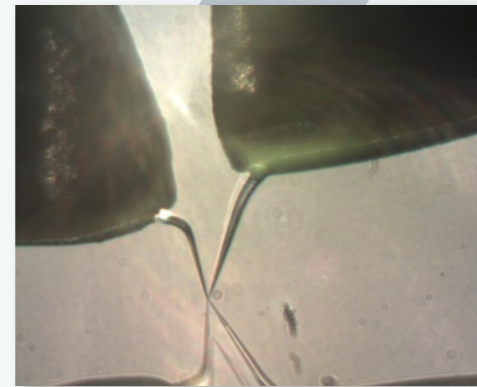
## Configurations

The Nanonics BioAFM platform offers a state of the art solution for biological imaging. Featuring high stability and unparalleled sensitivity, the system easily produces images of the most challenging biological samples with the highest resolution. Nanonics offers two BioAFM models in multiple configurations in order to address a wide range of budgets and experimental requirements:

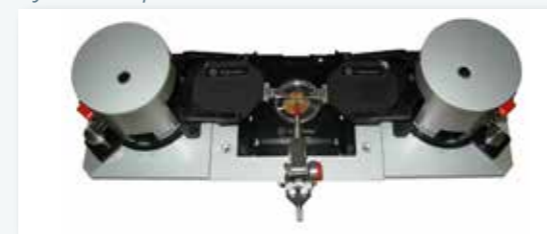
MultiView 2000 BioAFM



- Compact design
- Versatile optical configurations
- XYZ range: 180µm
- Largest Z range of any commercial AFM



Hydra Multiprobe BioAFM



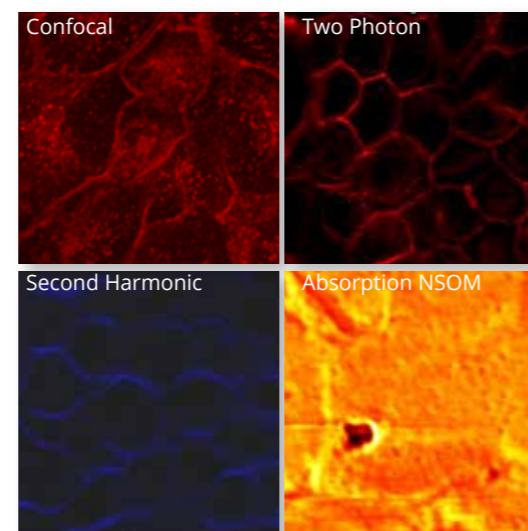
- Multiple AFM probes for combined SPM measurements
- Compatible with standard biological µManipulators
- Keep your patch clamping pipette in place while imaging with AFM

## Super-Resolution Optical Imaging

Over the last decade, a new powerful set of far-field optical tools has emerged for optical imaging of biological samples below the diffraction limit. These Super-resolution techniques have opened new horizons in the understanding of key biological phenomena. The Hydra BioAFM is compatible with all optical modes of Super-resolution. It permits the integration of a dual microscope for STED. PALM and STORM with total internal reflection prisms and an upright microscope are readily allowed.

**The Hydra BioAFM can combine AFM characterization with the following Super-resolution techniques:**

- STED
- PALM
- STORM



Linear Confocal, Non-linear Two Photon and Second Harmonic and Super-resolution Absorption NSOM Imaging of Living MDCK Cells With Dark Dots Indicating MicroVili Staining

## Super-Resolution Techniques Comparison

	Imaging Methods	Resolution	Characteristics	Limitations
Far-Field	Standard Far-field Imaging	XY: 500 nm Z: 1.6 microns	Absorption Fluorescence	No Super-resolution No 3D Topography Out-of-focus Light
	Confocal	XY: 250 nm Z: 0.7 microns	Fluorescence	No Super-resolution No 3D Topography Reduced Out-of-focus Light
	STED	XY: <100 nm Z: 0.7 microns	Fluorescence	Super-resolution No 3D Topography Reduced Out-of-focus Light Special Dyes High Light Intensities* : (104-109W/cm <sup>2</sup> ) Photobleaching* Largely Fixed Cells*
	STORM PALM	XY: <100 nm Z: >1 micron	Fluorescence of Special Dyes	Super-resolution No 3D Topography Reduced Out-of-focus Light Special Dyes High Light Intensities* : (103-104W/cm <sup>2</sup> ) Photobleaching* Largely Fixed Cells*
Near-Field	NSOM	XY: <50 nm Z: 0.01 microns	Absorption Fluorescence Illumination	Super-resolution Pixel by Pixel Correlated 3D Topography Low Intensity Highly Local Photobleaching

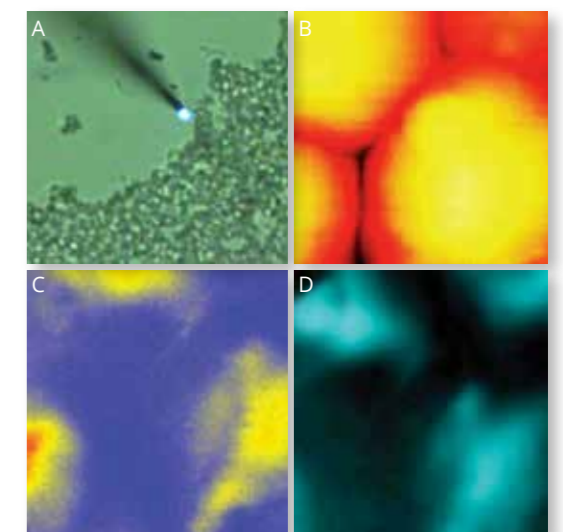
\*E. Betzig, Angew. Chem. Int. Ed. 2015, 54, 2 – 22

## Opening A New Frontier Live Cell Imaging With NSOM

Near-field Scanning Optical Microscopy (NSOM) marks a paradigm shift in Super-resolution imaging. Live cell imaging with this powerful technique has been compromised in the past by stiff AFM cantilevers. Today Nanonics, with VISTA™, achieves the potential of live cell imaging with NSOM.

**Open New Frontiers of Super-resolution Optical Imaging (<100nm) that:**

- Permits absorption and fluorescence
- Avoids the need for special dyes
- Correlates all optical contrast methods with 3D topography
- Allows highly confined zeptoliter illumination for fluorescence correlation spectroscopy (FCS) with physiologically relevant dye concentrations
- Enables AFM correlated FRET and dynamic FRAP with time resolutions previously unachievable
- Opens the door for the study of near-membrane phenomena with highly confined Z illumination



An NSOM probe is seen approaching yeast cells  
A. Seen from above with an upright microscope  
B. AFM image of the cells  
C. Fluorescence NSOM  
D. Transmission absorption NSOM

# Specifications

AFM SPECIFICATIONS	
Scanning Modes	Tip and sample scanning Ability to scan either tip, sample or both
Tip Scanning Range	MV 2000 BioAFM: XY=90 $\mu\text{m}^2$ and Z=90 $\mu\text{m}$ Hydra BioAFM: XY=40 $\mu\text{m}^2$
Sample Scanning Range	MV 2000: XY=90 $\mu\text{m}^2$ and Z=90 $\mu\text{m}$ Hydra BioAFM: XY=90 $\mu\text{m}^2$ and Z=90 $\mu\text{m}$
Closed Loop Scanner ( <i>optional</i> )	XY=100 $\mu\text{m}^2$ and Z=20 $\mu\text{m}$
Feedback Modes	High Q factor Tuning Fork feedback Optical feedback ( <i>optional</i> )
OPTICAL INTEGRATION	
Optical Access	Clear optical access from above, below and side
Optical Microscope Configurations	Integration with any research grade optical microscope Upright Inverted Dual optical microscopes (combined upright and inverted) Compatible with high NA optical objectives including water immersion objectives from both above and below
OPTICAL MODES OF OPERATION	
NSOM/SNOM	
NSOM Fluorescence	
Confocal microscopes	
Raman Confocal microscopes	
Ability to integrate a variety of Super-resolution methods such as PALM/STORM/STED	
ACCESSORIES	
Liquid cell with seamless optical integration from above and below	
Optional PEEK liquid cell for caustic solutions	
Compatible with SECM, SICM	
Heating/cooling module using a programmable controller with mKelvin resolution	
Chamber for controlled environment with full optical integration for both upright and inverted microscopes	
Inlets for gas and humidity control	
Micro fluid control	
SUPPORTED MODES	
All standard SPM operating modes including:	Force-distance spectroscopy SECM, SICM Nanolithography & Nanowriting MFM, EFM, Kelvin, Thermal, Electrical resistance, I-V curves etc.
SOFTWARE	
Dedicated system control and data acquisition	
Customized scripts and synchronization of data by triggers in real time of imaging	
Hybrid optical/AFM mode for control and synchronization of hybrid imaging techniques	
User friendly software with video tutorials and on-line support by our experts	
Data analysis and processing software	



**NANONICS IMAGING Ltd.**

Sales and Marketing Headquarters: Phone: +972 2 678 9573 | Fax +972 2 648 0827 | Email [info@nanonics.co.il](mailto:info@nanonics.co.il)

learn more at: [www.nanonics.co.il](http://www.nanonics.co.il)