

What is the applicable materials of [CO2 laser cutter equipment](#)?

acrylic, leather, wood, rubber, double-color board, MDF, plywood, bamboo, paper, cardboard, marble, granite, stone, glass, fabric, textile, coated metal, painted metal, anodised aluminum etc

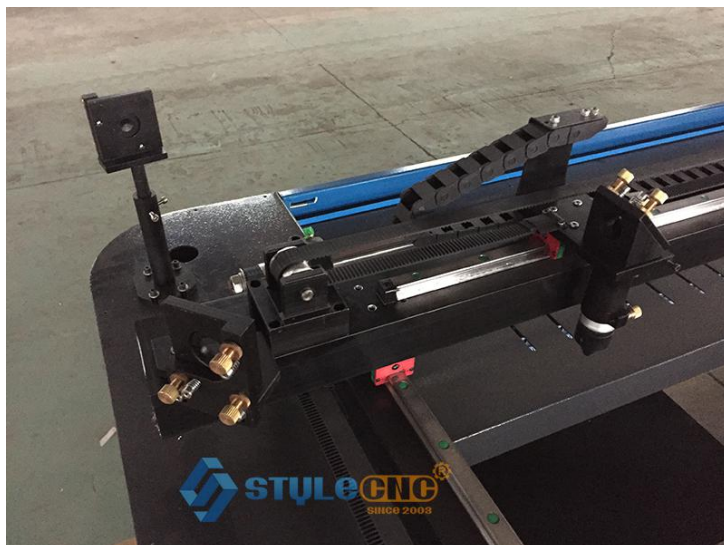
What is the parameters of CO2 laser cutter equipment?

Model	STJ9060
Working Area	900*600 (mm)
Laser Power	60W 80W 100W 130W 150W
Laser Type	Reci CO2 laser tube
Working Platform	Honeycomb/Blade
Working Speed	≤700mm/s
Positioning Accuracy	±0.05mm
Graphic Format Supported	BMP PLT DST AI DXF etc.
Cooling System	Water cooling and protecting system
Working Voltage	AC220V±10%,50~60Hz , 10A max
Working Temperature	0~45°C
Operating Humidity	5%~95%
Motor: Stepping	Stepping (Servo Optional)

What is the optional spare parts of CO2 laser cutter equipment

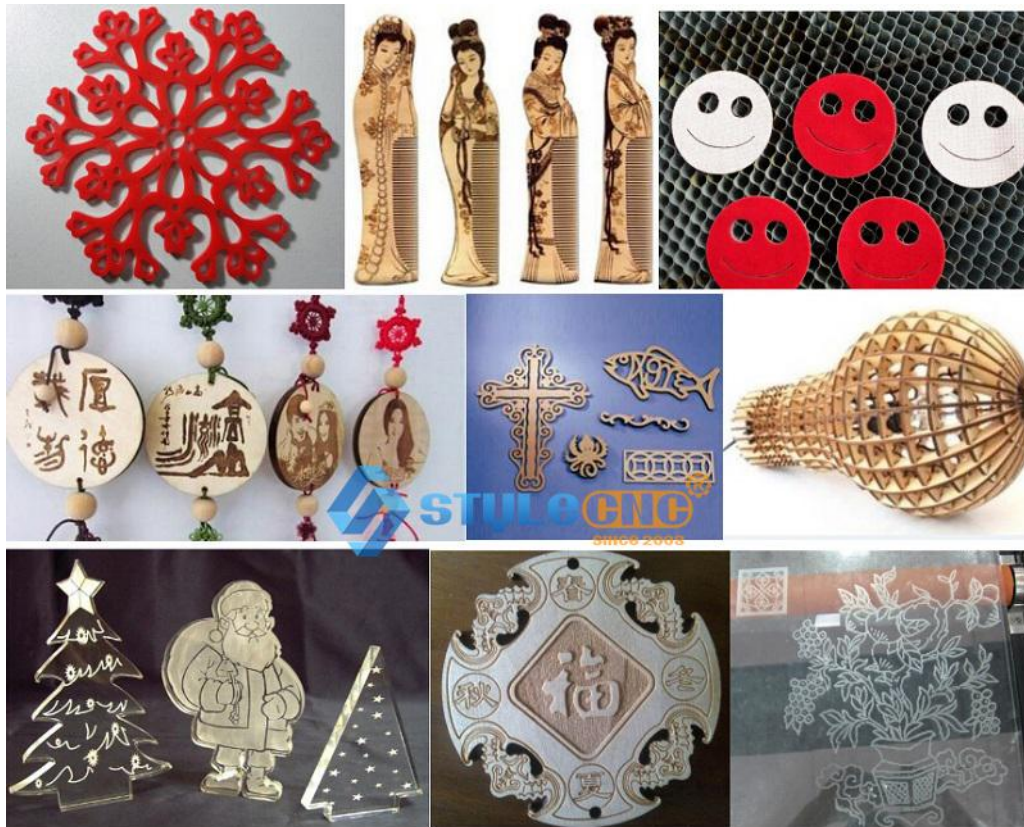
- 1.up-down worktable
2. red dot pointer
3. Rotary attachment
4. Water chiller

[Main parts of CO2 laser cutter equipment](#)





There are some samples of CO2 laser cutter equipment?



Package of CO2 laser cutter equipment?



Warranty of laser cutter machine:

1 years warranty for this desktop CO2 laser marking machine

After sale service of laser cutter machine:

1. We offer life-long technical support by call, email.
2. Our technician can give you remote guide online if you have any question.
3. We can record videos of operating the machine.
4. Free training course in our factory.
5. Engineer available to service machinery overseas.
6. Machine will be adjusted before it is delivered , operation disk/CD was included.