

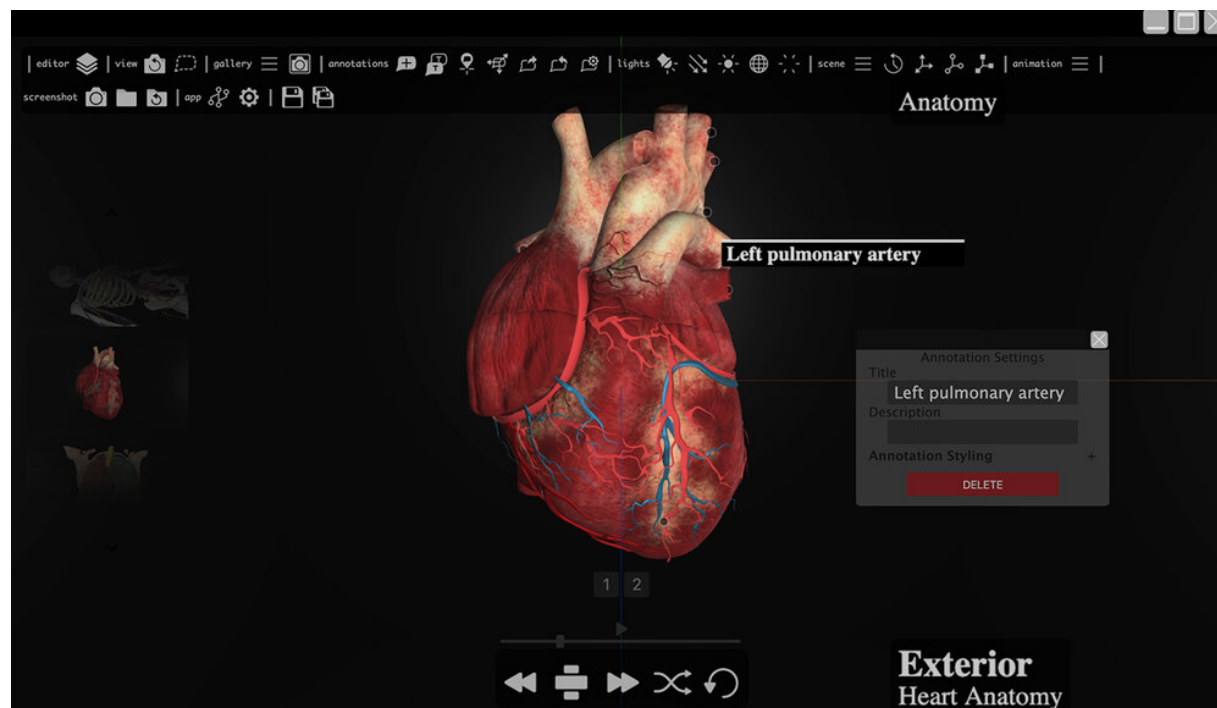
# Holoviewer App

Advanced cloud-based 3D visualisation software for Holographic 3D rendering.  
Display 3D models and animations in real time. Fast-render thousands of images.

## Overview

Showcase 3D models and animations in real-time on 2D monitors and 3D light field displays.

The visualisation app uses 3D graphics, web and cloud technologies including ThreeJS and WebGL. It requires a modern graphics card (GPU), Nvidia GTX 1070 as a minimum. The Holoviewer app is embedded within some of our products and is available for licensing.



# Features

## 3D Model Visualisation

- Scene manipulation: pan, zoom, rotate
- Playback for animations, model spin
- Animations, channeling
- Scene background
- User annotations, labelling, text
- Wireframe view

## Advanced visualisation

- Scene lighting
- User-defined camera paths (for animation)
- Environment maps
- Screenshots

## Model Management

- Galleries
- Versioning
- Download models from the cloud

## Rendering

- Holoprinter renderer
- Multiview rendering for Light Field displays
- Video generation

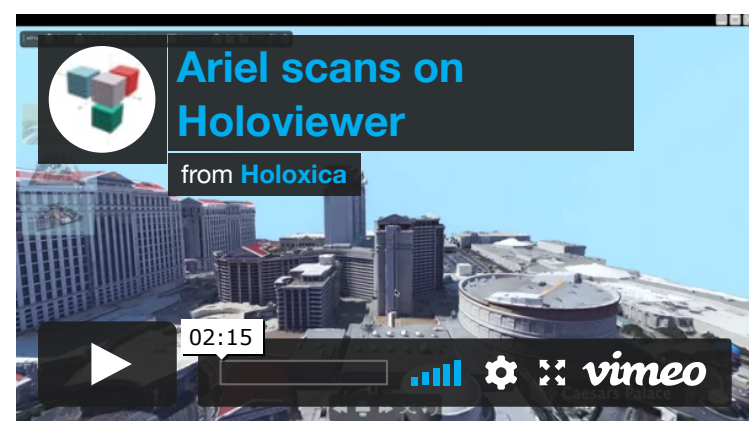
## Requirements

- PC with modern graphics card
- Operating system: MacOS, Windows, Linux
- Network (for installation)

## Medical Education and Surgical Planning



## Ariel Scans of Buildings



## Holoviewer on the Looking Glass 3D Light Field Display



# Applications

- Medical education and training
- Scientific data visualisation
- Simulation
- Engineering design
- Architecture & construction
- Maps and surveys
- Military & aerospace

For more info, [get in touch](#) or give us a call on +44 (0) 131 618 2142

[TWITTER](#) [Vimeo](#) [LINKEDIN](#) [INSTAGRAM](#)