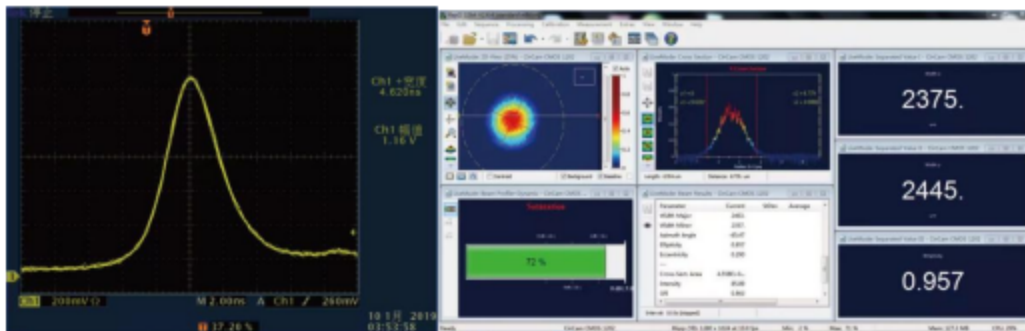
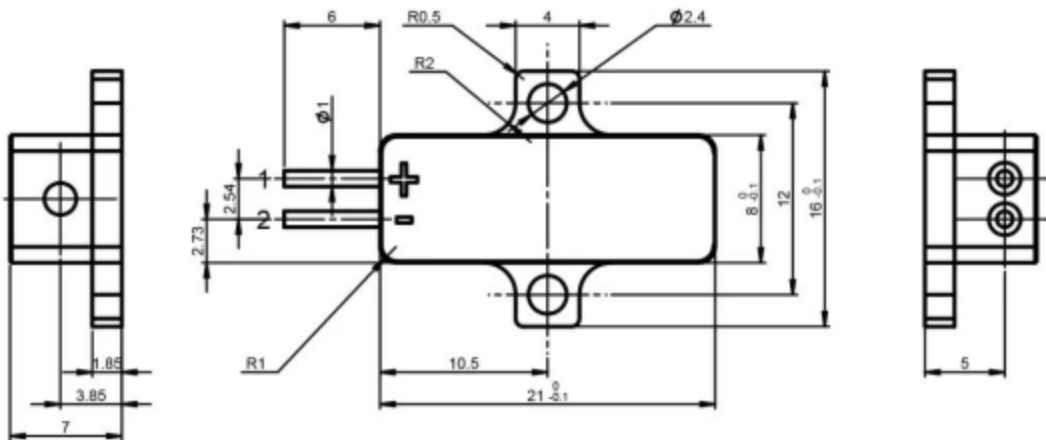


High RF 1535nm Er:glass laser transmitters



Wavelength(nm)	1535		
Pulse energy(μ J)	40	20	10
Repetition frequency(kHZ)	1	2.5	5
Pulse width(ns)	≤ 5		
Operating current(A)	5		
Operating voltage(V)	2		
Beam diameter(mm)	0.3		
Beam divergence Typ(mrad)	≤ 16	≤ 17	≤ 18
Beam directivity	$< 0.2^\circ$		
Beam Mode	TEM ₀₀		
Weight(g)	≤ 10		
Dimensions(L×W×H,mm)	21×8×7		
Operating temperature(°C)	- 40~ + 65		
Storing temperature(°C)	- 55~ + 80		