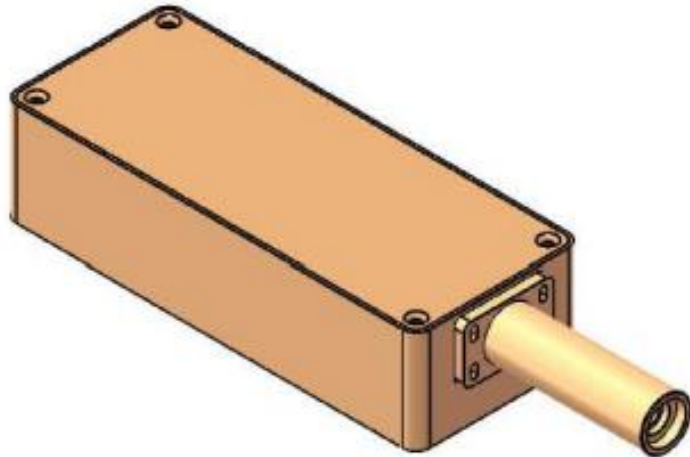


High Power Laser

Specifications

Model Number	HP-IR1064-1000-QN
Optical Specifications	
Wavelength	1064 nm
Center Wavelength Deviation	+/- 0.1 nm
Output Power	300 ~ 1000 mW
M2	< 1.2
Power Stability (over 4 hours) (rms)	< 3 %
Operating Mode	Pulse
Polarization Ratio	> 100:1
Pulse Repetition Frequency (PRF)	10 ~ 30 KHz
Pulse Width	< 10 ns
Warm-up time	< 10 minutes
Beam Waist Diameter	< 300 μ m
Working Temperature	0 to 40 ° C
Cooling Mode	FANS
Estimated Lifetime (MTTF)	10000 hours
Warranty Time	1 year
Mechanical Specifications	
Dimension of Laser Head	188 (L) x 50 (W) x 31 (H) mm
Dimension of Power Supply	204 (L) x 148 (W) x 87 (H) mm
Dimensional Tolerances	+/- 1 mm



Dimensions

