

パイフotonics株式会社
Pi PHOTONICS, INC.



トップページ
HOME

会社概要
COMPANY

ニュース&トピックス
NEWS & TOPICS

ホログラム
HOLOGRAM

定單位相顕微鏡
QPM

ホロライト
HOLORER-IT!

お問い合わせ
CONTACT

HOLORER-it!

HOLORER-it! LED LIGHTING

TELECENTRIC type [HL01]

STRAIGHT LINE type [HL02]

CONCENTRATE type [HL03]

LINE SERIES type [HL-]

PARALLEL SERIES type [HL=]

HOLORER-it! POWER [HLP]

HOLORER-it! COLOR [HLC]

HOLORER-it! PLUS [HL+]

HOLORER-it! OPTIONS

HOLORER-it! APPLICATIONS

➡ HOLORER-it! LED LIGHTING



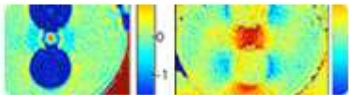
➡ HOLORER-it! APPLICATIONS



➡ QPI-unit for QPM



➡ QPM MEASUREMENTS

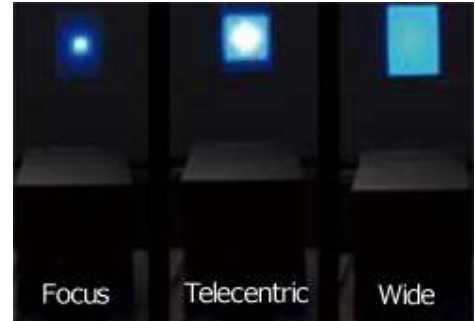


Telecentric type [HL01]

HOLORER-it! Telecentric lighting, only 1m square narrow area at the distance of 50m away, can be possible by high quality large diffraction optics. HOLORER-it! can adjust the angle of the illumination region and spread. We have a wide variety of HOLORER-it! LED lightings such as ultraviolet light - visible light - infrared light.



Distance lighting with telecentric type



Possible adjustment of lighting spread

HOLORER-it! Options

Please see the followings for the detail of HOLORER-it! option products.

[Variable Power Supply \[PS-D1\]](#)

[HOLORER-it! Stand \[-HLS\]](#)

[Polarization Lighting \[-PH\] \[-PV\]](#)

[Use AAA battery \[-D\]](#)

[DMX Dimmer Control Power Supply \[HLDMX18\]](#)

HOLORER-it! Applications

Please see the followings for the detail of each HOLORER-it! LED lightings.

[for Hologram Reconstruction](#)

[for Inspection Lighting](#)

[for Stage Lighting](#)

[for Line Illumination](#)

[for Telecentric Light-up](#)

[for Laboratory](#)