

HOLORER-it!

HOLORER-it! LED LIGHTING

TELECENTRIC type [HL01]

STRAIGHT LINE type [HL02]

CONCENTRATE type [HL03]

LINE SERIES type [HL-]

PARALLEL SERIES type [HL=]

HOLORER-it! POWER [HLP]

HOLORER-it! COLOR [HLC]

HOLORER-it! PLUS [HL+]

HOLORER-it! OPTIONS

HOLORER-it! APPLICATIONS

➔ HOLORER-it! LED LIGHTING



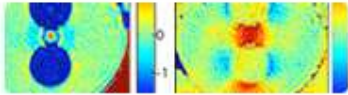
➔ HOLORER-it! APPLICATIONS



➔ QPI-unit for QPM



➔ QPM MEASUREMENTS



Straight Line type [HL02]

HOLORER-it! Straight line type produces line illumination beam. It can produce line illumination at a distance with the characteristics of the beam, one beam will not spread, but other beam will spread. When ordering this product, please give us a specific instruction of spreading direction to the device.

HL02-H type (Horizontal spread)



Visualizing the light diffusion



Straight line lighting

HL02-V type (Vertical spread)



Straight line lighting nearby and distance.

HOLORER-it! Options

Please see the followings for the detail of HOLORER-it! option products.

[Variable Power Supply \[PS-D1\]](#)

[HOLORER-it! Stand \[-HLS\]](#)

[Polarization Lighting \[-PH\] \[-PV\]](#)

[Use AAA battery \[-D\]](#)

[DMX Dimmer Control Power Supply \[HLDMX18\]](#)

HOLORER-it! Applications

Please see the followings for the detail of each HOLORER-it! LED lightings.

[for Hologram Reconstruction](#)

[for Inspection Lighting](#)

[for Stage Lighting](#)

[for Line Illumination](#)

[for Telecentric Light-up](#)

[for Laboratory](#)

