

パイフotonics株式会社  
Pi PHOTONICS, INC.



トップページ  
HOME

会社概要  
COMPANY

ニュース&トピックス  
NEWS & TOPICS

ホログラム  
HOLOGRAM

定單位相顕微鏡  
QPM

ホロライト  
HOLORER-IT!

お問い合わせ  
CONTACT

HOLORER-it!

HOLORER-it! LED LIGHTING

TELECENTRIC type [HL01]

STRAIGHT LINE type [HL02]

CONCENTRATE type [HL03]

LINE SERIES type [HL-]

PARALLEL SERIES type [HL=]

HOLORER-it! POWER [HLP]

HOLORER-it! COLOR [HLC]

HOLORER-it! PLUS [HL+]

HOLORER-it! OPTIONS

HOLORER-it! APPLICATIONS

#### ➡ HOLORER-it! LED LIGHTING



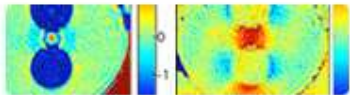
#### ➡ HOLORER-it! APPLICATIONS



#### ➡ QPI-unit for QPM



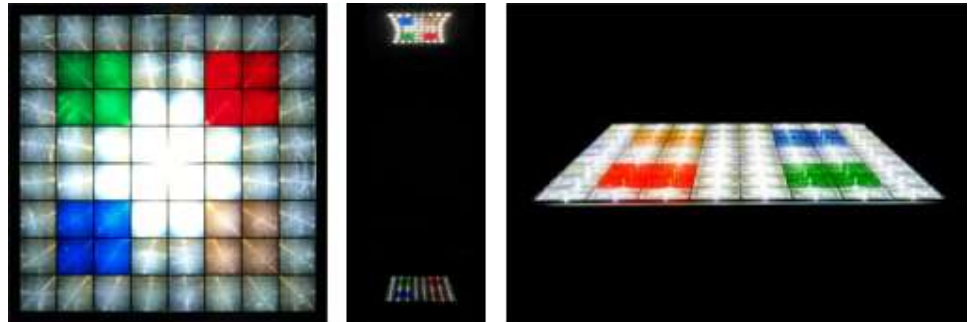
#### ➡ QPM MEASUREMENTS



## Parallel Series type [HL=]

HOLORER-it! Parallel Series type illumination can be realized with its cubic shape chassis. Connecting HOLORER-it! in parallel without space can extend its size for the needs.

### HOLORER-it! Parallel Series type [HL=88]



We can build in HOLORER-it! for creating lighting floor stage.

HOLORER-it! Options

Please see the followings for the detail of HOLORER-it! option products.

[Variable Power Supply \[PS-D1\]](#)

[HOLORER-it! Stand \[-HLS\]](#)

[Polarization Lighting \[-PH\] \[-PV\]](#)

[Use AAA battery \[-D\]](#)

[DMX Dimmer Control Power Supply \[HLDMX18\]](#)

HOLORER-it! Applications

Please see the followings for the detail of each HOLORER-it! LED lightings.

[for Hologram Reconstruction](#)

[for Inspection Lighting](#)

[for Stage Lighting](#)

[for Line Illumination](#)

[for Telecentric Light-up](#)

[for Laboratory](#)