

HOLORER-it!

HOLORER-it! LED LIGHTING

TELECENTRIC type [HL01]

STRAIGHT LINE type [HL02]

CONCENTRATE type [HL03]

LINE SERIES type [HL-]

PARALLEL SERIES type [HL=]

HOLORER-it! POWER [HLP]

HOLORER-it! COLOR [HLC]

HOLORER-it! PLUS [HL+]

HOLORER-it! OPTIONS

HOLORER-it! APPLICATIONS

➔ HOLORER-it! LED LIGHTING



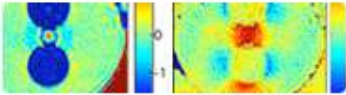
➔ HOLORER-it! APPLICATIONS



➔ QPI-unit for QPM



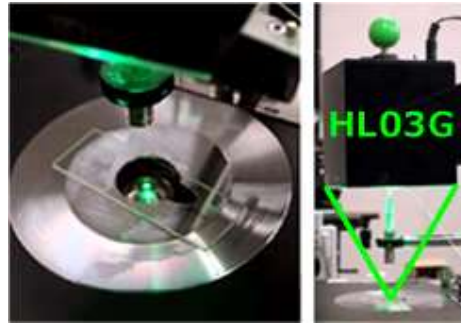
➔ QPM MEASUREMENTS



Concentrate type [HL03]

HOLORER-it! Concentrate type can focus at one point. For concentrate lighting at one point at longer working distance (W.D.), high numerical aperture (N.A.) and resolution improvement and there is no heat quantity to the specimen are suitable for microscope.

HOLORER-it! Concentrate type : green color[HL03G]



High-power lighting at one point.

HOLORER-it! Options

Please see the followings for the detail of HOLORER-it! option products.

[Variable Power Supply_\[PS-D1\]](#)

[HOLORER-it! Stand_\[HLS\]](#)

[Polarization Lighting_\[PH\]_\[PV\]](#)

[Use AAA battery_\[D\]](#)

[DMX Dimmer Control Power Supply_\[HLDMX18\]](#)

HOLORER-it! Applications

Please see the followings for the detail of each HOLORER-it! LED lightings.

[for Hologram Reconstruction](#)

[for Inspection Lighting](#)

[for Stage Lighting](#)

[for Line Illumination](#)

[for Telecentric Light-up](#)

[for Laboratory](#)