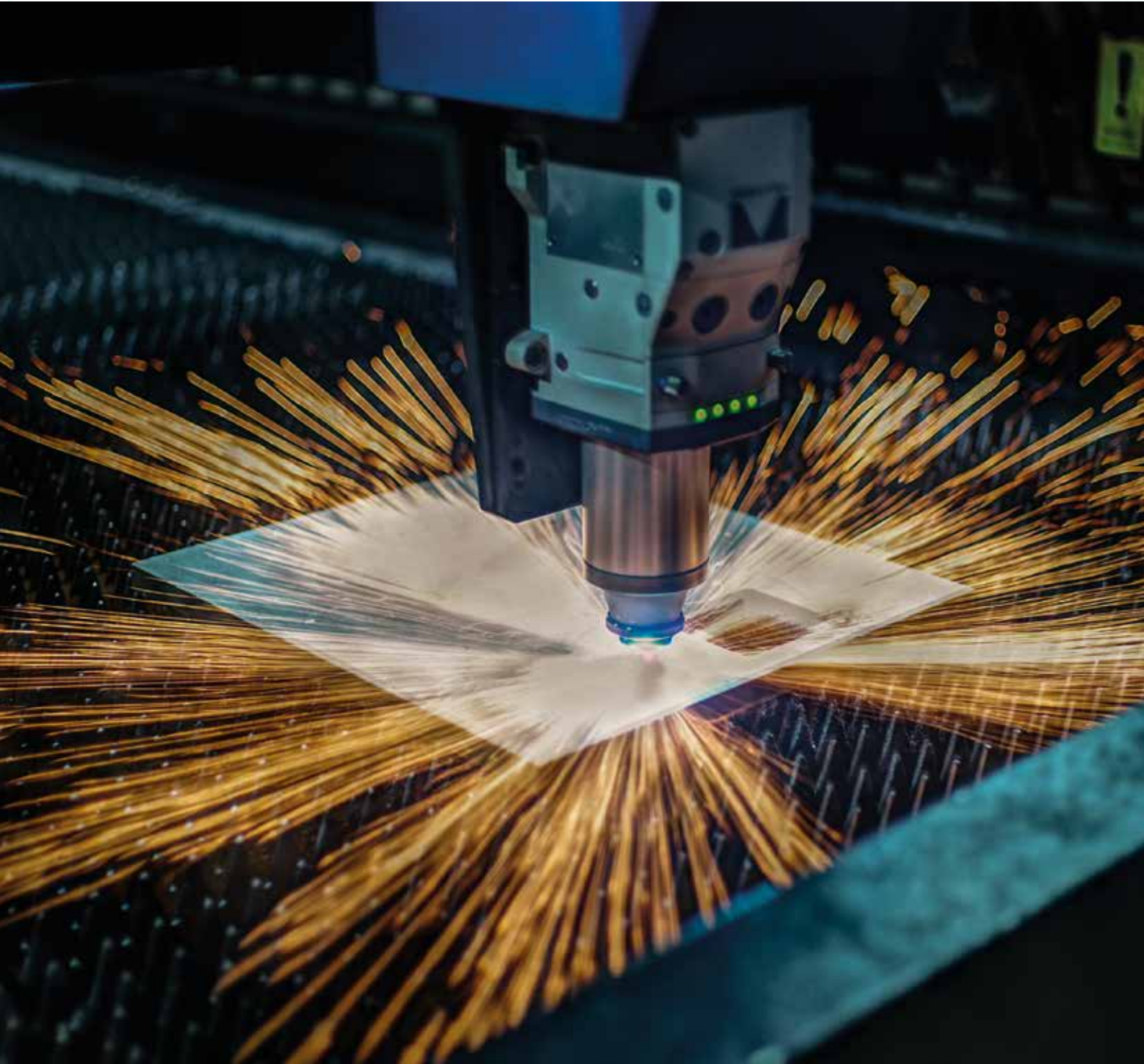


HACO FIBER LASERS



Fiber Lasers
Flatbed Lasers
Combi-lasers
Tube Lasers

CUTTING HEADS

Precitec LightCutter Auto Focus

The Precitec LightCutter is the perfect solution for efficient and cost-effective laser cutting. The newest addition to the LightCutter family is designed for medium power range applications, up to 4 kW, in all metals while retaining high cutting quality. Even mild steel, stainless steel and aluminum are no exception to this rule.



Main benefits

- Excellent value for money
- Very high cutting speed and optimal edge quality
- Motorized focus adjustment
- Different fiber plugs (QBH, D)
- Display of the focus position on the front side of the cutting head
- Focal position up to 23 mm



Precitec ProCutter Auto Focus

The newest ProCutter has further increased its performance and automation features. Faster, better and stronger than ever before, how laser cutting should be. Reliability and power capability has been perfected, up to 15 kW with the possibility of automatic nozzle exchange.



Main benefits

- Motorized focus position adjustment for automatic machine setup and piercing work
- Lightweight and slim design created for fast acceleration and cutting speed
- Drift-free, fast-reacting distance measurement
- Permanent protective window monitoring
- Completely dustproof beam path with protective windows
- LED operating status display
- Output of all sensor data via Bluetooth® to APP and machine control possible
- Pressure monitoring in the nozzle area (gas cutting) and in the head

(Other brands of cutting heads are also available)

LASER SOURCES

It all starts at the (Fiber Laser) Source

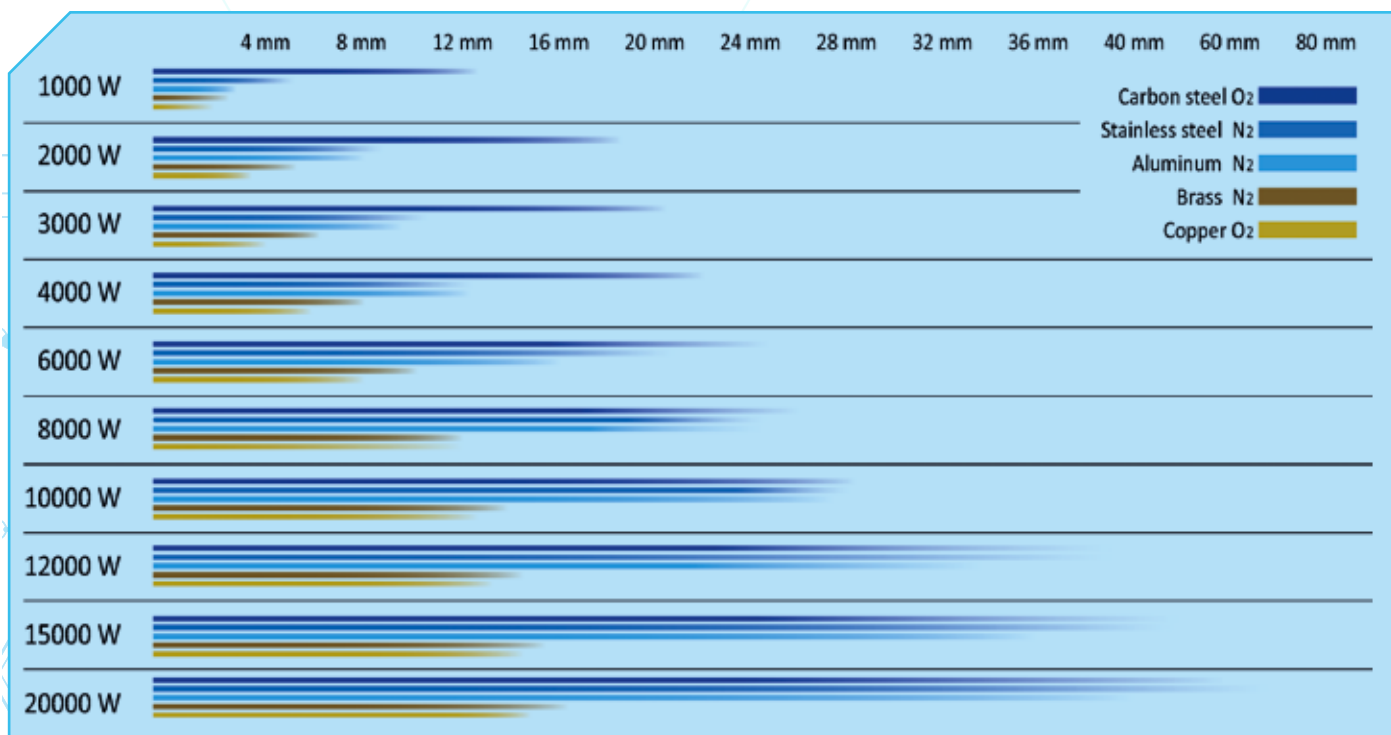
The Fiber Laser source is a crucial component of our high performance machines. This is why HACO has chosen for IPG & Raycus as their partners for the beating heart of our HFL series. Both companies have extensive experience in the R&D and production of high quality FL sources. High output, low power consumption and superior beam quality are just a few of the benefits offered by Fiber Lasers and this without breaking the bank.

Main benefits

- High quality light beam
- Reliability
- Ultrahigh power output
- Higher electro-optical conversion efficiency
- Compact structure
- No maintenance required
- Environment friendly
- Low power consumption
- Easy installation
- Mobile
- Durable



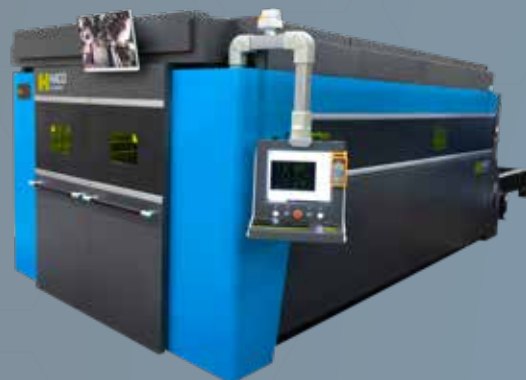
CUTTING PERFORMANCE



SHEET CUTTING SYSTEMS

HFL A series

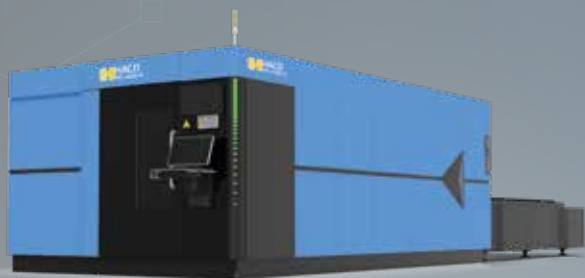
Economical sheet metal cutting



Models	3015, 4020, 6020
Laser power	1,0 - 4,0 kW
Multi-axes pos. speed	140 m/min
Max. acceleration	1,4 g
Characteristics	Cost-effective bestseller

HFL H series

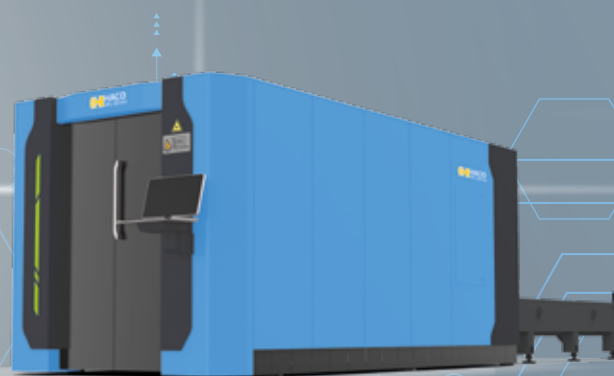
Medium Power sheet metal cutting



Models	4020, 6020, 6025, 8025
Laser power	3,0 - 15,0 kW
Multi-axes pos. speed	169 m/min
Max. acceleration	2,0 g
Characteristics	Widest versatility and capacity

HFL X series

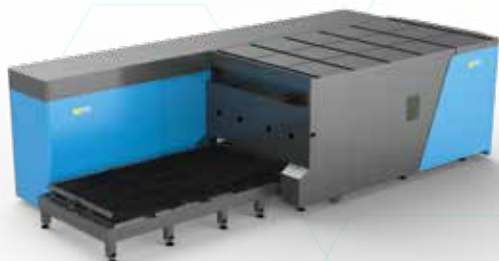
Compact sheet metal cutting



Models	3015
Laser power	1,0 - 3,0 kW
Multi-axes pos. speed	140 m/min
Max. acceleration	1,4 g
Characteristics	Easy transport & quick setup

COMBINED SHEET & TUBE CUTTING SYSTEMS

HFL E Series



Laser power	HFL E-22EQ HFL E-35Q HFL E-35HQ	1,0-4,0 kW 1,0-4,0 kW 6,0 kW
Sheet cutting sizes	HFL E-22EQ HFL E-35Q HFL E-35HQ	3015, 4020, 6020 3015, 4020, 6020 4020, 6020
Tube cutting	Max. 6,5m length	
Tube size range	HFL E-22EQ	∅ 20-210 mm □ 20*20 mm - 150*150mm
	HFL E-35Q	∅ 20-210 mm □ 20*20 mm - 230*230mm
	HFL E-35HQ	∅ 20-210 mm □ 20*20 mm - 230*230mm
Characteristics	Digital controls pneumatic chucks	

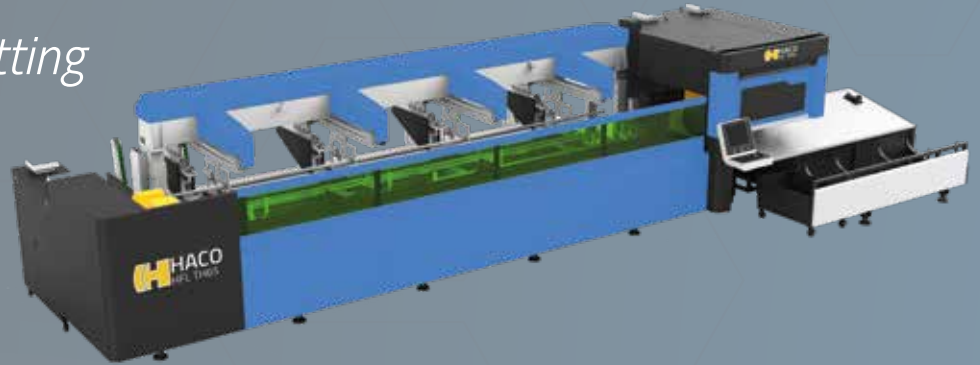
CUTTING SAMPLES



TUBE CUTTING SYSTEMS

HFL TH65

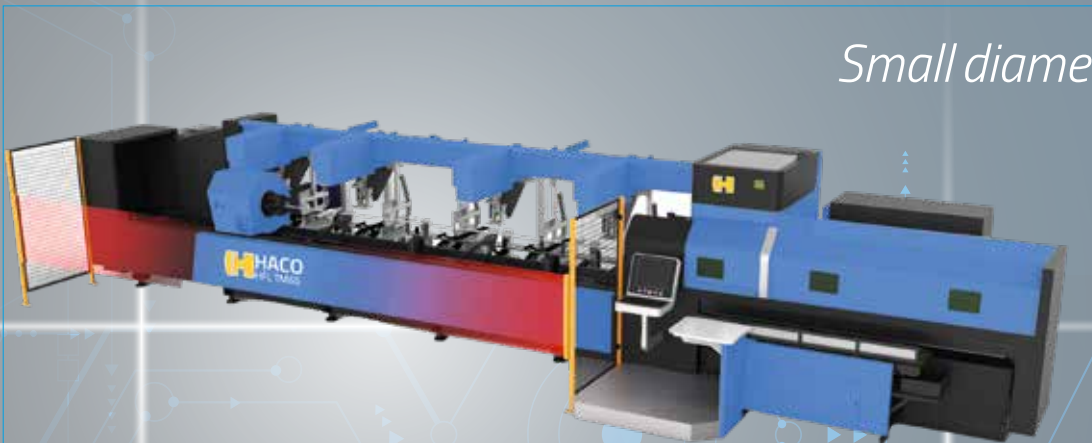
Economical tube cutting



Laser power	1,0 - 3,0 kW
Rotation speed	100 rpm
Multi-axes pos. speed	117 m/min
Tube size range	Max. 6,5m length
	∅ 20-210 mm
	□ 20*20 mm - 150*150 mm
Characteristics	Pneumatic chucks

HFL TM65

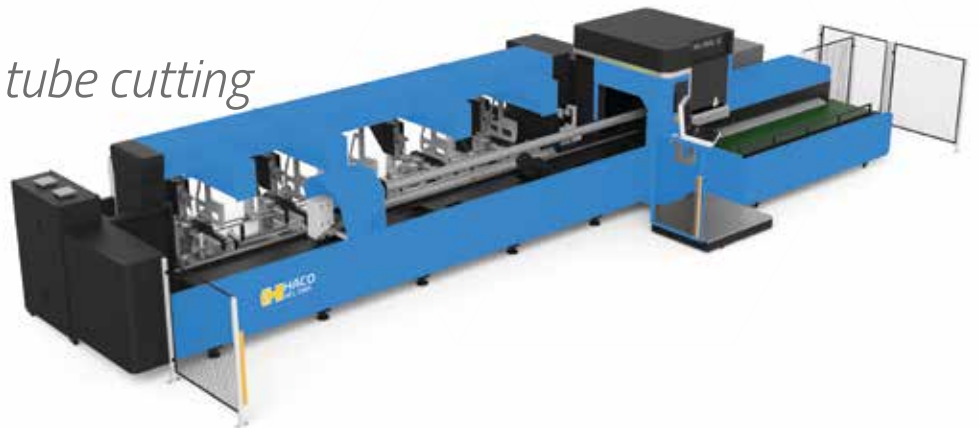
Small diameter tube cutting



Laser power	1,0 - 3,0 kW
Rotation speed	140 rpm
Multi-axes pos. speed	161 m/min
Tube size range	Max. 6,5m length
	∅ 10-100 mm
	□ 10*10 mm - 70*70 mm
Characteristics	Digital controlled pneumatic chucks

HFL TS65

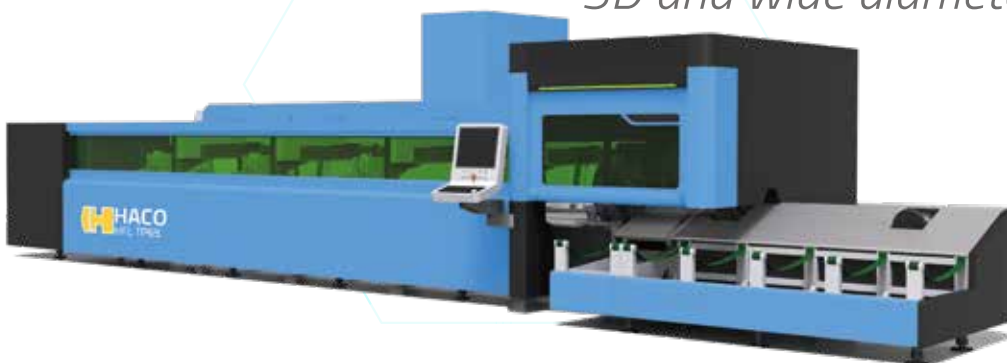
Wide diameter range tube cutting



Laser power	1,0 - 3,0 kW
Rotation speed	120 rpm
Multi-axes pos. speed	144 m/min
Tube size range	Max. 6,5m length
	∅ 12-254 mm
	□ 12*12 mm - 200*200 mm
Characteristics	Digital controlled pneumatic chucks

HFL TP65S

3D and wide diameter range tube cutting



Laser power	1,0 - 3,0 kW
Rotation speed	120 rpm
Multi-axes pos. speed	161 m/min
Tube size range	Max. 6,5m length
	∅ 12-254 mm
	□ 12*12 mm - 200*200 mm
Characteristics	Digital controlled pneumatic chucks



50 YEARS OF IMPRESSIVE PERFORMANCES

1965 > ...

WWW.HACO.COM 

*This catalogue is not a contractual document and only for illustrative purposes.
HACO reserves the right to modify any specifications within this catalogue without prior notice.*