

Glan Thompson Polarizer

Polarizers

Glan Thompson Polarisers has a wavelength range from 350 nm to 2300 nm. This NIR and UV-VIS polarizer is recommended for low-to-medium power applications (up to 2W cw) requiring a large field of view and the highest degree of polarization purity. The Glan-Thompson Polarizer is made from two calcite elements cemented together to form a prism. This configuration reduces its power-handling capability but results in an increased field of view. The angular field of view of this UV-VIS polarizer is asymmetrical about the mechanical axis and varies as a function of wavelength as shown below. The rejected (ordinary) beam is absorbed by the prism housing.

This polarizer is ideal for removing interference fringes from transmission spectra recorded at Brewster's angle and for obtaining optimum sensitivity for specular reflection spectroscopy measurements.

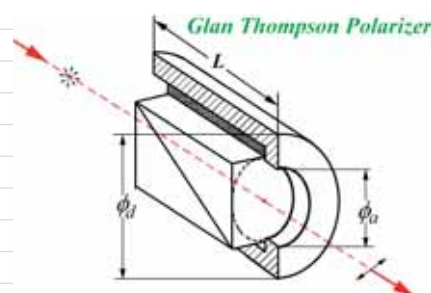
Advantages:

- Large Acceptance Angle
- High Polarization Purity
- Low Power Application



Specification:

Material:	α -BBO, Calcite
Wavelength Range:	α -BBO: 200-900 nm, Calcite: 350-2300 nm
Extinction Ratio:	α -BBO: $<5 \times 10^{-6}$; Calcite: $<5 \times 10^{-5}$
Parallelism:	<1 arc Min
Surface Quality:	20/10
Beam Deviation:	<3 arc minutes
Wavefront Distortion:	$\lambda/4$ @ 632.8nm
Damage Threshold:	>200 MW/cm ²
Coating:	Single MgF ₂
Mount:	Black Anodized Aluminium



1. α -BBO Glan Thompson Polarizer (Special for DUV and visible, 220-900nm)

Part No.	L/CA	Extinction Ratio	Angular Field(°)	C.A. ϕ_a (mm)	O.D. ϕ_d (mm)	L ± 0.1 (mm)
GMP5-006	1.6	$<5 \times 10^{-6}$	>15	6.0	15.0	18.0
GMP5-008				8.0	25.4	21.0
GMP5-010				10.0	25.4	24.5
GMP5-015				15.0	30.0	32.5

2. Calcite Glan Thompson Polarizer

Part No.	L/CA	Extinction Ratio	Angular Field(°)	C.A. ϕ_a (mm)	O.D. ϕ_d (mm)	L ± 0.1 (mm)
GMP6-106	2.5	$<5 \times 10^{-5}$	14-16	6.0	15.0	23.0
GMP6-108				8.0	25.4	28.0
GMP6-110				10.0	25.4	33.0
GMP6-115				15.0	30.0	45.5
GMP6-206	3.0	$<5 \times 10^{-5}$	25-28	6.0	15.0	26.0
GMP6-208				8.0	25.4	32.0
GMP6-210				10.0	25.4	38.0
GMP6-215				15.0	30.0	53.0