



# GWI Sapphire Optics

Lenses Prisms Tubes Windows

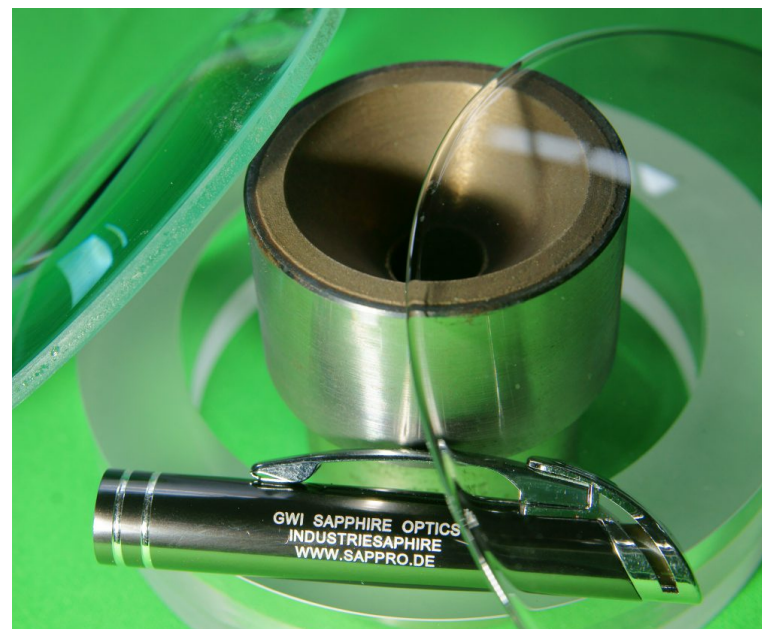
[ABOUT US \(HTTPS://SAPPRO.DE/?PAGE\\_ID=554&LANG=EN\)](https://sappro.de/?page_id=554&lang=en) [SERVICES \(HTTPS://SAPPRO.DE/?PAGE\\_ID=570&LANG=EN\)](https://sappro.de/?page_id=570&lang=en)

[INFO \(HTTPS://SAPPRO.DE/?PAGE\\_ID=706&LANG=EN\)](https://sappro.de/?page_id=706&lang=en) [CONTACT \(HTTPS://SAPPRO.DE/?PAGE\\_ID=593&LANG=EN\)](https://sappro.de/?page_id=593&lang=en)

[🇩🇪 \(HTTPS://SAPPRO.DE/?PAGE\\_ID=27&LANG=DE\)](https://sappro.de/?page_id=27&lang=de) [🇬🇧 \(HTTPS://SAPPRO.DE/?PAGE\\_ID=570&LANG=EN\)](https://sappro.de/?page_id=570&lang=en)

[FUN \(HTTPS://SAPPRO.DE/?PAGE\\_ID=837&LANG=EN\)](https://sappro.de/?page_id=837&lang=en) 🔍

## Services



---

Our specialty is growing and machining of synthetical sapphire: We grow sapphire in optical quality (Czochralski method). We also offer special growth techniques for UV-range (ca. 200 nm) with low fluorescence. We even offer sapphire which is practical dispersion-free.

- ▶ **Semi-finish ()**
- ▶ **Precision parts (polished) ()**
- ▶ **CNC Machining ()**
- ▶ **Extras ()**
- ▶ **Tolerances ()**
- ▶ **Quality Management ()**
- ▶ **Technical glass ()**
- ▶ **Technical Ceramics ()**