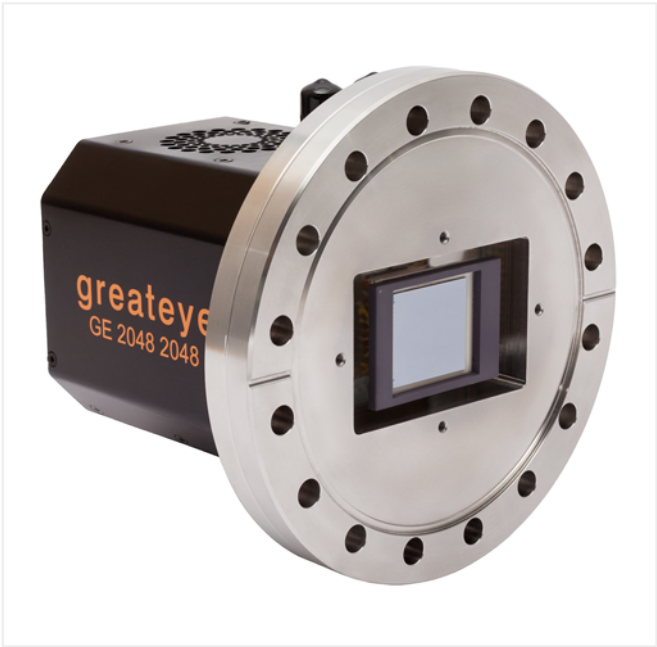


Menu

Home / Imaging / CCD Cameras / VUV EUV X-ray cameras / GE-VUV 2048 2048 series /  
GE-VUV 2048 2048 BI DD

# GE-VUV 2048 2048 BI DD



This series of highly sensitive, cooled cameras with vacuum flange is equipped with ultra-low noise 16-bit readout electronics and perfectly suited for spectroscopy and imaging applications in the VUV, EUV and X-ray range up to 20 keV. The CCD detectors deliver spectra and images with outstanding dynamic range. To find the best solution for your application, greateyes offers various flange types and sensors with quantum efficiencies up to 97%.

## More Views

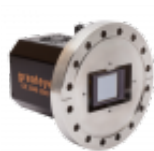


Image area	27.6 mm × 27.6 mm
Pixel format	2048 × 2048 pixels
Pixel size	13.5 μm × 13.5 μm
CCD sensor cooling	Min. -80°C to 20°C, forced air or liquid cooling
Gain	High: 1.0 counts/e- Low: 0.4 counts/e-
Data link	USB, Gigabit Ethernet
Distance flange - focal plane	7.5 mm for CF DN100
Dimensions (H x W x L)	9.1 cm (3.58") x 9.7 cm (3.82") x 13.5 cm (5.31")
Weight (g)	3500
CCD sensor type	Back-illuminated, deep depletion, fringe suppression
Full well capacity	150 k e-

Description  
Features  
Description

This series of highly sensitive, cooled cameras with vacuum flange is equipped with ultra-low noise 16-bit readout electronics and perfectly suited for spectroscopy and imaging applications in the VUV, EUV and X-ray range up to 20 keV. The CCD detectors deliver spectra and images with outstanding dynamic range. To find the best solution for your application, greateyes offers various flange types and sensors with quantum efficiencies up to 97%.

#### Features

- Up to 96% quantum efficiency, VUV to X-ray range
- Back-illuminated CCD
- Excellent QE in the EUV and soft X-ray

[Request a quote](#)

---

[Contact](#)[About Us](#)[News](#)

---

© 2018 Laserand, Inc. All Rights Reserved.