

FAC 光纤柱面镀膜

The Fast Axis Collimated by an AR Coated Fiber

产品描述: Product Overview

柱面透镜,也叫 FAC 快轴准直透镜,一般采用直径 63um 或 200/220um 光纤进行侧面镀膜,对激光快轴发散角进行准直,提高光功率耦合效率。FAC 快轴准直透镜镀膜难度大,一般需把多根一定长度的玻璃/光纤平行固定在夹具上,然后装载到镀膜机,进行正反面两次镀膜。镀膜以后再将单根玻璃光纤分割成小段以供单个产品使用。

The fast axis collimator is a simple cylindrical lens, which was generally applied in optical fiber coupling laser. The optical power coupling efficiency was improved by the beam collimation at fast axis divergence angle. Photonstream developed a fiber level FAC with 2-sides anti-reflective thin film coated. This is an innovated solution for compact high power laser package product. The $\varnothing 63\mu\text{m}$ or 200/220um fiber are fixed parallel to the fixture and coating 2-sides. Customer then divides the long lens into small sections according to application.

应用领域 Product Application

- 光纤激光器耦合 Fiber laser diode coupling
- 无人驾驶汽车光纤传感 Fiber optic sensing

产品特点 Product Feature

- High cleanness and visual inspection for each unit
- Precision AR coated on 2-sides
- High laser damage threshold
- High optical power coupling efficiency
- Accept custom design diameter(63um typically)



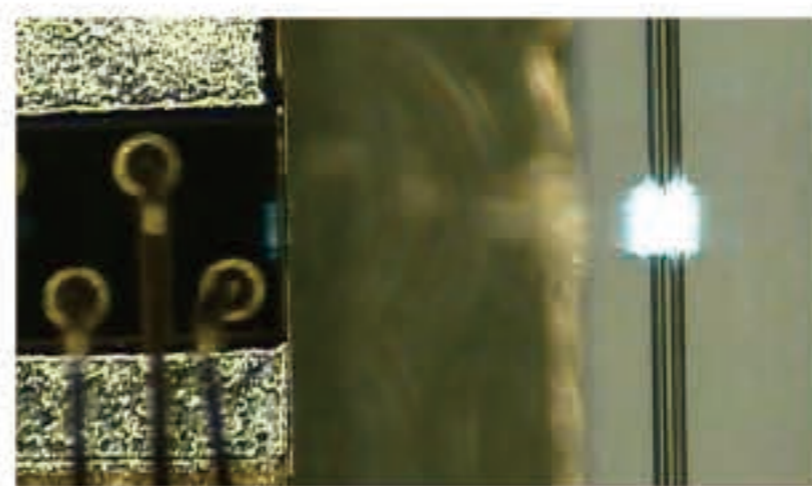
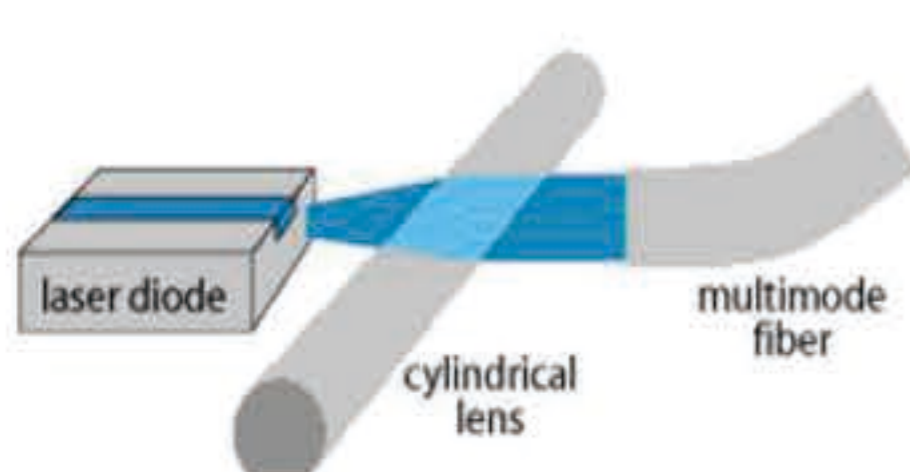
主要参数 parameter

光纤规格 Fiber Type	$\varnothing 63\mu\text{m}$ 高纯度无包层玻璃棒; $\varnothing 63\mu\text{m}$ High purity non-clad glass rod
透镜数量 Quantity	MM-S200/220-22A 光纤; 或客户指定 MM-S200/220-22A fiber, Customer Customize
透镜有效长度 Effective Length	25-27 根/夹 25-27 pieces/set
	60.5mm/根 客户可按需求裁成 7-8mm 小节使用 60.5mm/piece, Customers cut it into 7-8mm as required

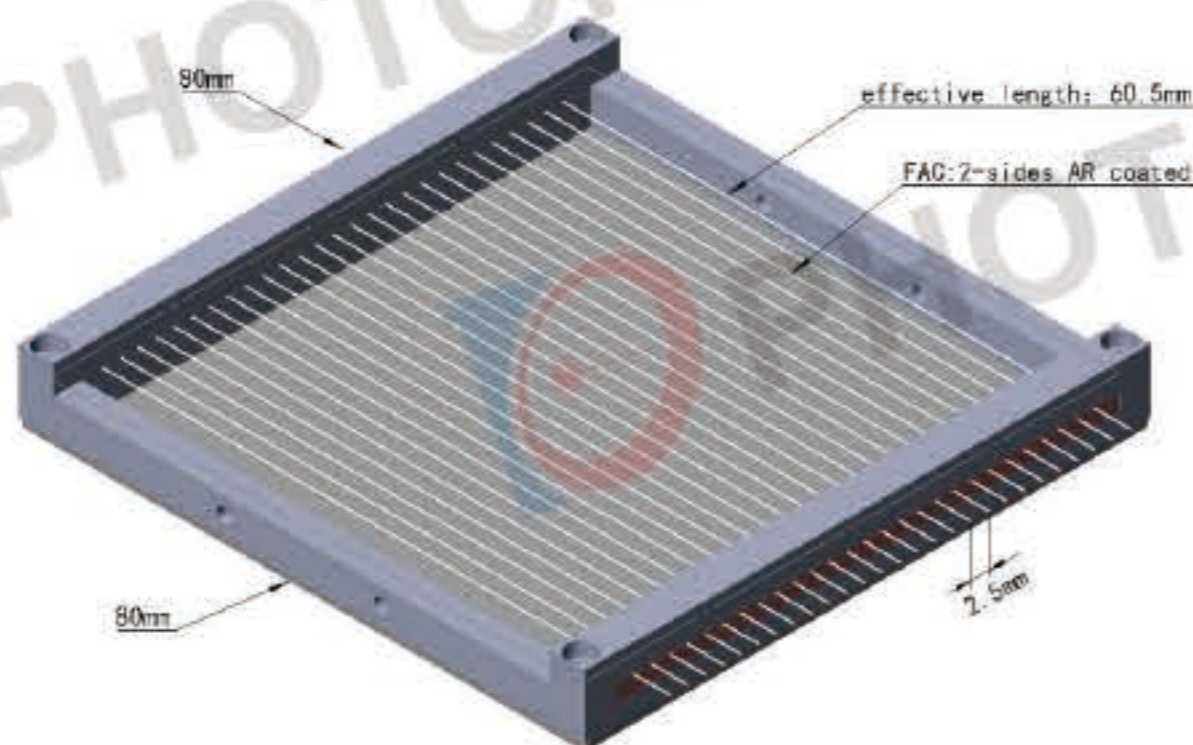
Email: contact@photonstream.com
 网址: www.photonstream.cn

Tel: (+86)-755-8416 6678 Fax: (+86)-755-8456 0576
 地址: 深圳市龙岗区坪地街道教育北路 88 号飞莱特工业园 2 栋 5 楼

镀膜方式 Coating Method	光纤柱面正反两面镀增透膜 Anti-reflection coating on 2- sides
镀膜参数 Coating Parameter	$R < 0.2\% @ \text{CW} \pm 25\text{nm}$, $\text{CW} = 638/915/945\text{nm}$; 或客户定制 Customize



产品图示 Product Outline



镀膜曲线 Coating Curve

