



High Quality Professional Scopes

8 Center Parkway, Plainfield, CT 06374  
1 (860) 963.1141 - 1 (800) 4.SCOPE S



Please Select from the following menu options:

Expand All | Collapse All

Home

Products

By Industry

By Scope

- FSM 10-2 X 36 FIERSCOPE
- IVS 10-4 x 20 Video Scope
- FS 8 x 40 Fiberscope
- FS 6 Fiberscope
- FS 312 Fiberscope
- FS 3 Fiberscope
- FS 120 Fiberscope
- FS 75 Flexible Mining Scope
- FSR 078 Microborescope
- FS 350 Illuminated Viewer
- FS 066 Fiberscope
- IG 350 Flexible viewer
- FSR 039 Microborescope
- VFS 13.7 x 300 cm Fiberscope
- VFS 8-4 x 135 cm Fiberscope
- VFS 6.5-4 x 135 cm Fiberscope
- VFSR 2.0 Fiberscope
- VFS 1.7 Fiberscope

US Market Price Lists

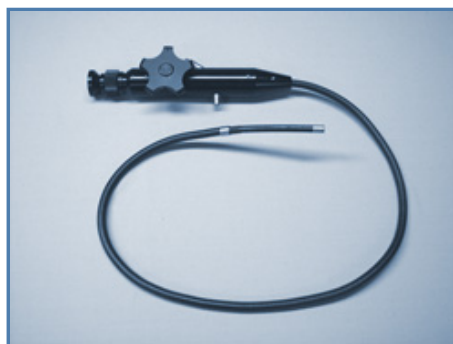
Custom Scopes

Specification Sheets

Contact Us

### FSM 10-2 x 36 IN. FIBERSCOPE

This Fiberscope provides the Mold Inspection Professional access to flexible fiberoptic technology for viewing within walls or remote areas not visible to the eye without damaging the structure for access. The scope features a 36in. long semi-flexible probe with 2-way articulation, a 2mm working channel for retrieval of mold samples, portable Illuminator and custom fitted foam carry case.



The FSM 10-2 x 36 in. Fiberscope

#### Standard Components:

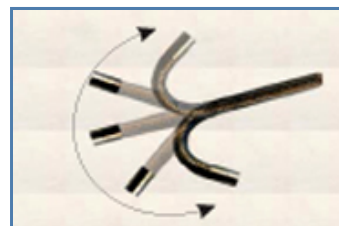
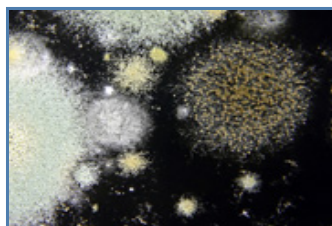
- Articulation: 2-way (180 degrees up/120 degrees down)
- Semi-Flexible(stay-put) shaft: 10mm diameter x 36 inches long
- Working channel: 2mm diameter
- Depth of field: 10mm to 100mm
- Field of view: 50 Degrees
- Eyepiece: focusable and photo capable
- Portable Illuminator: 3 watts uses "C" cell batteries

#### Options:

- Grasping forceps
- Sampling Brush
- 150 watt Illuminator
- Flexible fiberoptic Cable for connecting the Scope to the 150 watt illuminator
- "C" mount video adapter
- 35mm/still digital camera adapter
- CCD cameras and monitors



The FSM 10-2 provides the Mold Inspection Professional access to flexible fiberoptic technology for viewing within walls or remote areas not visible to the eye without damaging the structure for access.



2 way articulation guides the viewer around corners and dark recesses. .