



PRODUCTS SERVICE COMPANY CONTACT

FH SERIES HIGH POWER LASERS

FH SERIES 7000/8000-WATT LASERS FROM PRC OFFER MAXIMUM POWER AND PERFORMANCE TO CUT AND WELD MATERIALS OF MAXIMUM THICKNESS. THESE SINGLE ENCLOSURE LASERS NOT ONLY PACK POWER, BUT HAVE THE MODE QUALITY AND STABILITY SUITABLE FOR RELIABLE THICK PLATE CUTTING WITH CONTINUOUS OPERATION 24/7.

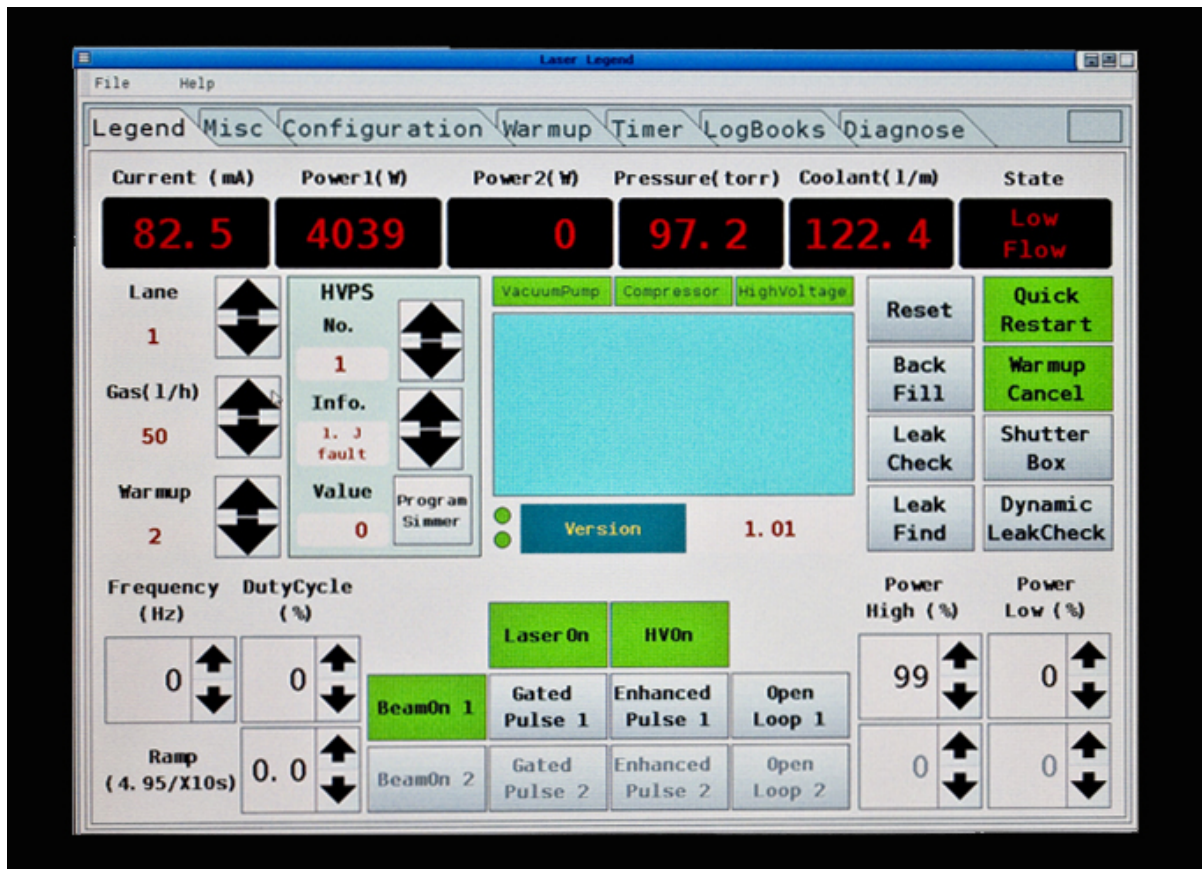
FEATURES

- Microprocessor based controls with built in diagnostic routines
- Unmatched pulsing performance
- Reliable and efficient DC Excitation
- Continuous operation capability
- 24-Hour technical support

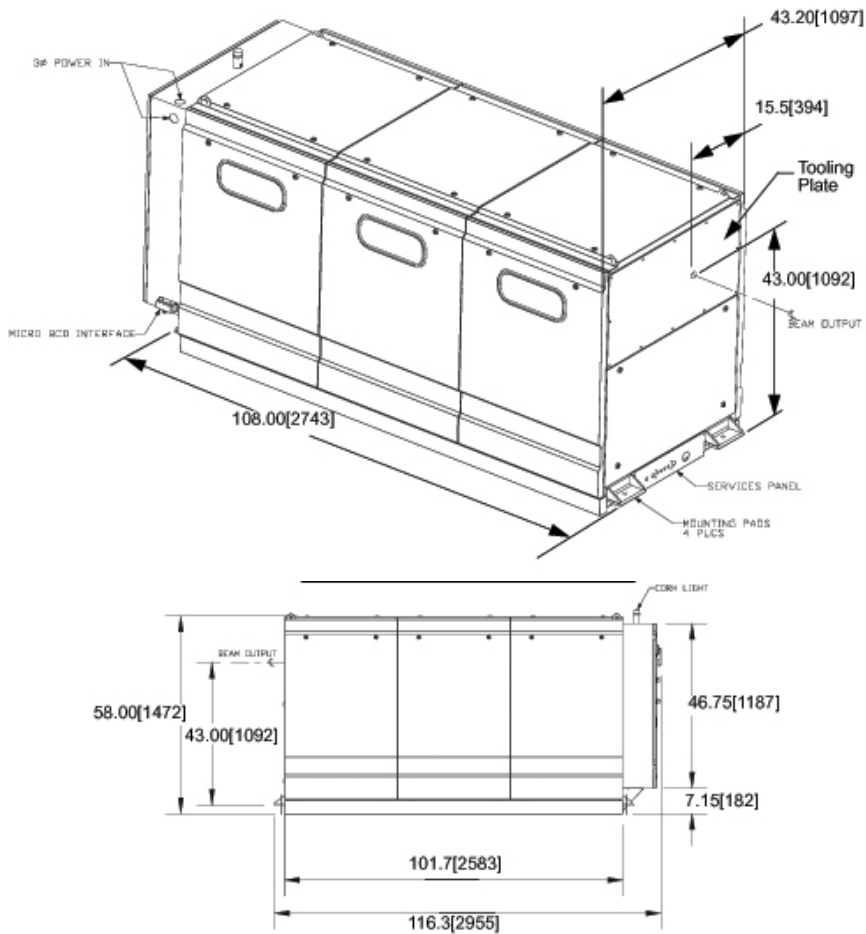


TOUCH SCREEN STATUS, CONTROL & DIAGNOSTIC PANEL

PRC's optional touchscreen control provides laser status information and fault displays. Additionally, the control offers automated test routines, input/output diagnostic information, maintenance logbook, and can control power and pulsing parameters for basic laser applications.



PLAN VIEW



SPECIFICATIONS

| | FH 7000 | FH 8000 |
|--------------------------------|---------------------------------------|----------------|
| Rated Power (CW) | 7000 Watts | 8000 Watts |
| Peak Power (Pulse) | 17500 Watts | 19500 Watts |
| Operating Costs | \$9.27/hr | \$9.69/hr |
| Gas Consumption | 25L/hr <i>(China 50L/hr)</i> | 50L/hr |
| Beam Mode | Q Mode | Q Mode |
| Beam Quality (M ²) | 3.0 | |
| Heat Load | 210,000 BTU/hr | 239,000 BTU/hr |
| Coolant Flow | 40GPM / 152LPM | |
| Pulse Frequency | | |
| Gated Pulse | CW - 5kHz | |
| Superpulse | CW - 1kHz | |
| Hyperpulse | CW - 1kHz | |
| Electrical | | |
| Volts/Hertz | 460V/60Hz, 420V/50/60Hz, 380V/50/60Hz | |
| KvA (@110% CW Power) | 76.5 | 85.5 |
| Cut Capacity | | |
| Steel | 1.25" / 32mm | |
| Stainless Steel | 1.25" / 32mm | |
| Aluminum | 0.5" / 12mm | |

© 2019 PRC Laser