

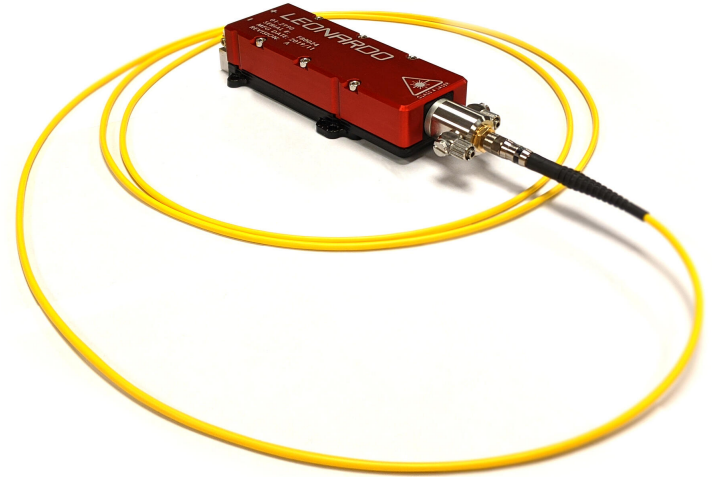


NEW F8

[Request for Quote](#)

KEY FEATURES

- 500 W fiber-coupled laser diode with 225 μm delivery fiber
- Simplified, efficient optical system
- Wavelength stabilization available
- Robust design for operation in harsh environments
- Compact and lightweight



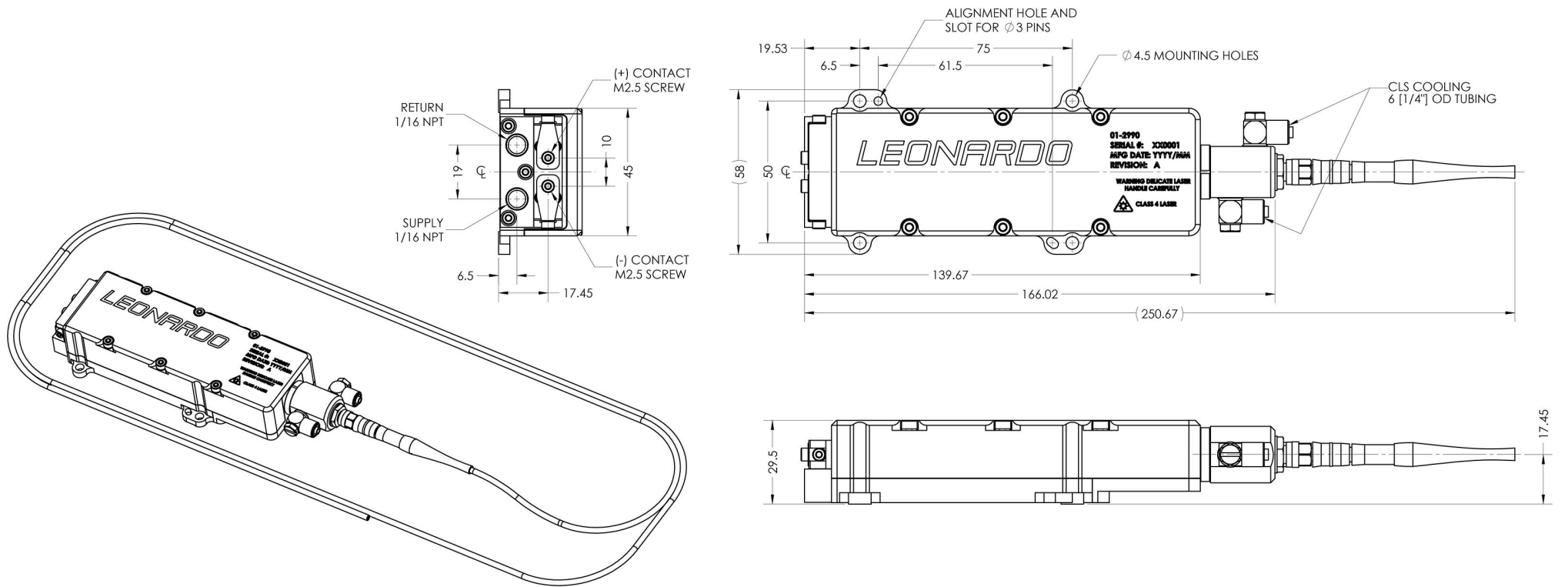
TYPICAL SPECIFICATIONS

Typical Parameters (@25°C)	Units	Typical Value
Output Power	W	500
Operation Mode		CW
Fiber Size	μm	225
NA		0.22
Fiber Length	m	1
Center Wavelength	nm	976
Spectral Width (FWHM)	nm	4.5
Power Conversion Efficiency	%	48
Threshold Current	A	2.5
Operating Current	A	27
Operating Voltage	V	33

ELECTRICAL AND FLUID SPECIFICATIONS

Cooling Type	Units	Filtered Water
Operating Temperature	$^{\circ}\text{C}$	25
Wavelength Coefficient	$\text{nm}/^{\circ}\text{C}$	0.3
Recommended Particle Filter	μm	5
Flow Rate	lpm	2.8
Pressure Drop (inlet to outlet)	psi	40

MECHANICAL SPECIFICATIONS



Lasertel

- Conductively Cooled Laser Diodes
- VCSEL Arrays
- Fluid Cooled Laser Diodes
- Fiber Coupled Laser Diodes
- Pointers & Illuminators
- Lidar Sources
- Direct Diode Sources

Electronics

- Radar
- IR Systems
- EW
- Avionics
- Defense Systems
- Targeting Systems
- Avionic Electronics

Support Services

About

- Blog
- Leonardo Electronics US, Inc.
- Careers
- Privacy Policy
- SSA
- Global

Employee Portal

Leonardo Electronics US, Inc. is a subsidiary of Leonardo. Copyright 2020. All Rights Reserved

