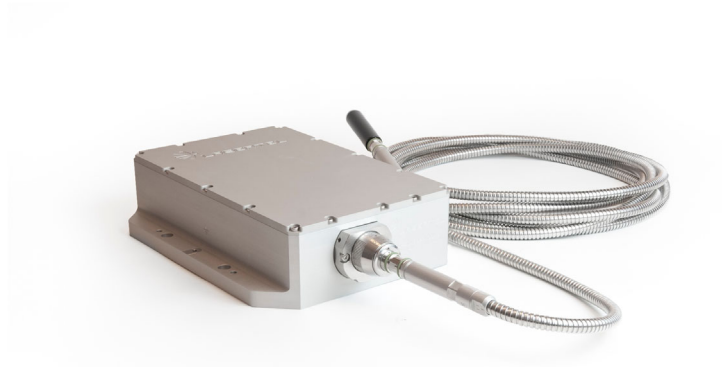


F6

Output Power to 1000W
Fiber size 1000µm. Fluid cooled.

Key Features

- 760nm to 1100nm
- Air cooled or filtered water options
- Beam shaping and line generation options
- Wavelength stabilized
- Military rugged versions available
- Detachable fiber option



Typical Specifications

760nm - 1100nm					
Typical Optical Parameters (@25 °C)	Units	Typical Value			
Output Power	W	200	600	1000	6000
Operation Mode			CW		Pulsed
Spectral Width	nm		4		3.5
Fiber Core Diameter	µm	200	400	800	200
Fiber Length	m		0.5		
Fiber NA	-		0.22		
Fiber Termination	-		SMA905		
Operating Current	A	17	35	75	100
Operating Voltage	V	36	42		240