



# Epilog Laser

(.)

[Made in USA \(/made-in-usa.htm\)](#)

[Home \(/index.htm\)](#) / [Laser Machines \(/laser-machines/product-line.htm\)](#) / [Zing Laser Series](#)

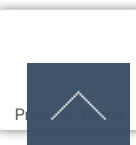
[Get a Free Brochure and Samples →](#)

[\(/contact/request-information.htm\)](#)

EPILOG LASER

## Epilog Zing Laser Series

[Get a Free Brochure and Samples](#)





## Epilog Zing Laser Series

The Epilog Zing Laser starter series is Epilog's small format, high-quality engraving line. The perfect desktop laser cutter for everything from home use to starting a business, the Zing Laser provides high-quality engraving and cutting, at a low cost.

Epilog's smallest laser, the Zing 16 laser machine, features a 16" x 12" (406 x 305 mm) work area with 30 and 40-watt laser options, while the Zing 24, provides a larger 24" x 12" (610 x 305 mm) work area with 30, 40, 50, and 60-watt laser options.

And we're proud to say the Zing Lasers are 100% designed, engineered and built in the USA!

### Zing Laser Series Machine Tour



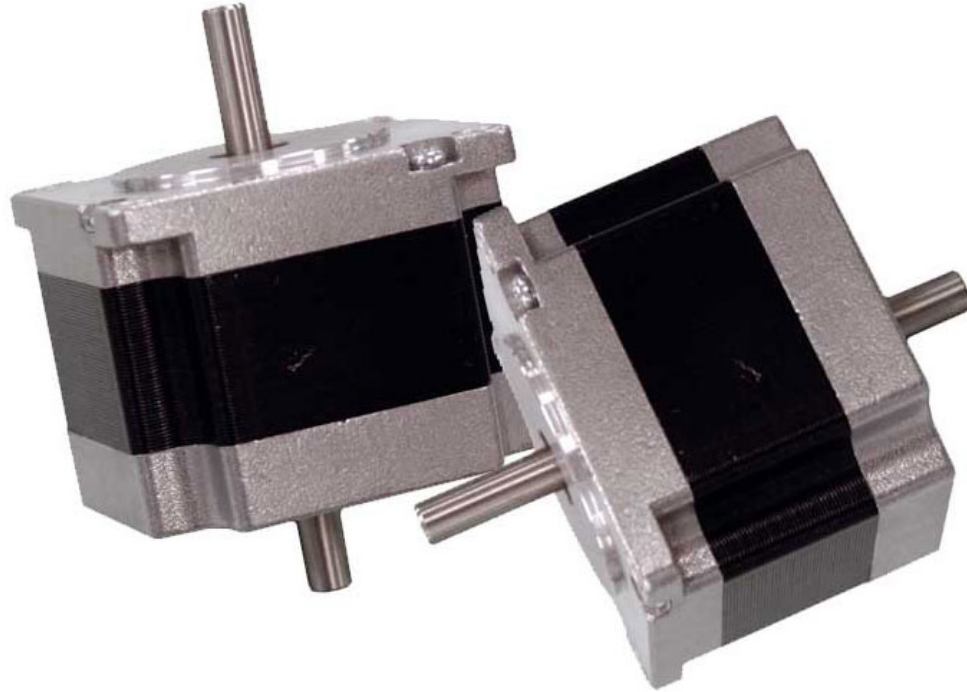
---

Request Information

## Features of Epilog's Zing Laser Machines

The high-quality features of the Epilog Zing Starter Series provide a user friendly experience, and work in conjunction to provide you with the industries best engraving and cutting quality available in a small format laser system.





## High-Speed Stepper Motors

The Zing's high-speed stepper motors provide high-resolution engraving and cutting quality. With the Zing you'll see the high-quality engraving for which Epilog is famous.

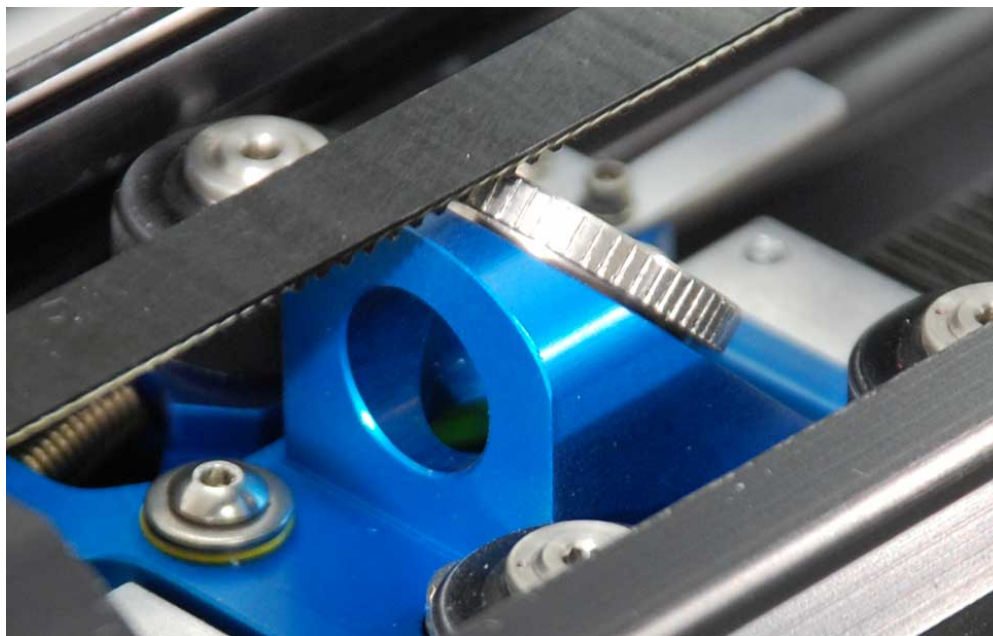




## Engineered and Manufactured in the USA

Proudly designed, engineered, and manufactured in our Golden, CO headquarters at the base of the Rocky Mountains.





## Long-Life Lenses Rated to 500 Watts

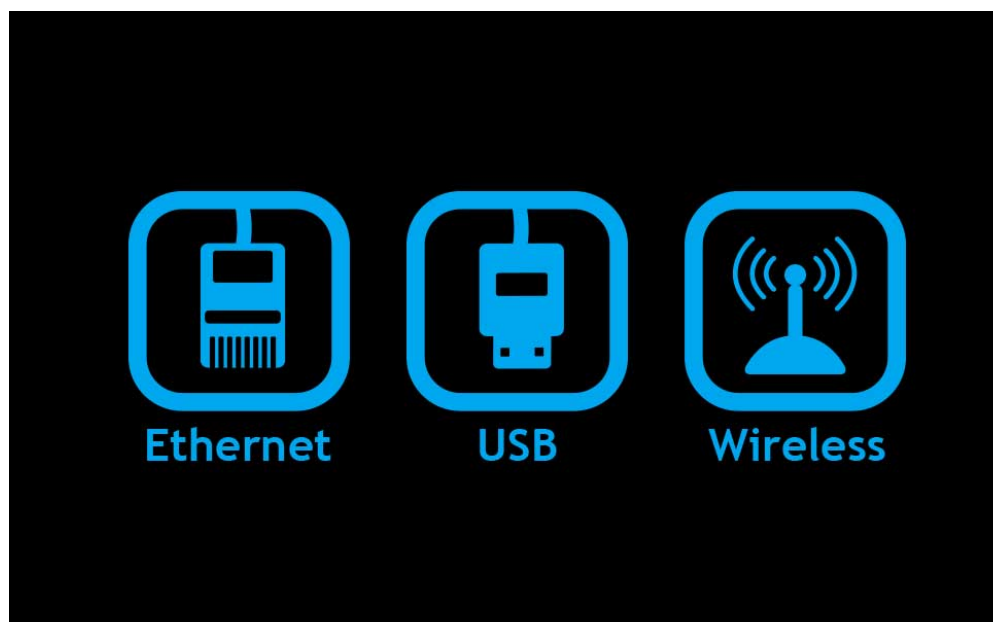
Lenses rated to 500 watts can last the entire life of the system, saving you time and money.





## Air Assist Curtain

Remove heat and combustible gases from the surface of the material as you cut.





---

## Network Your Laser Across Your Business

The Zing Laser series features built-in Ethernet, USB, and a new wireless connection for more options for networking your laser.



## Movable Home Position

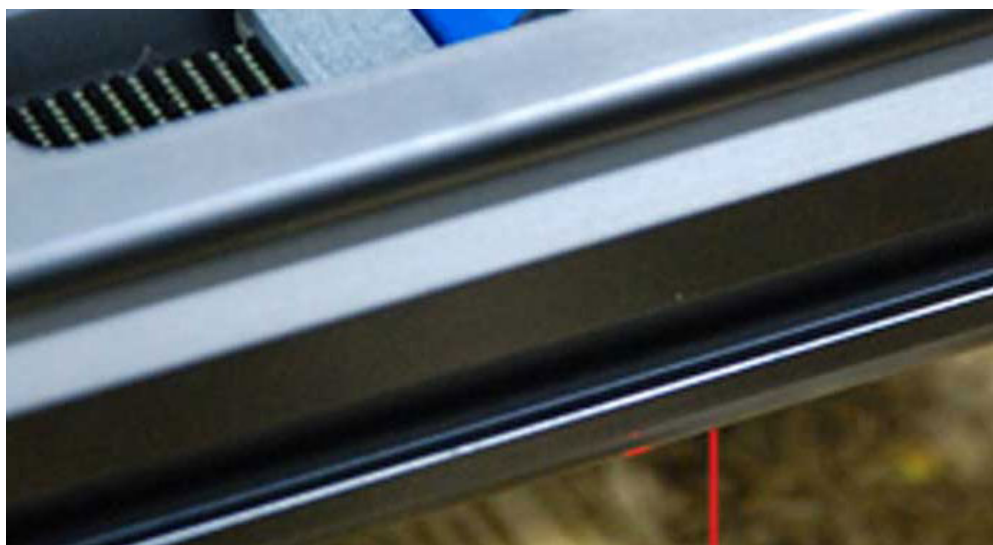
Move and set your home position to any point on the engraving table - you're not limited to the upper left corner.





### Stamp & 3D Relief Engraving

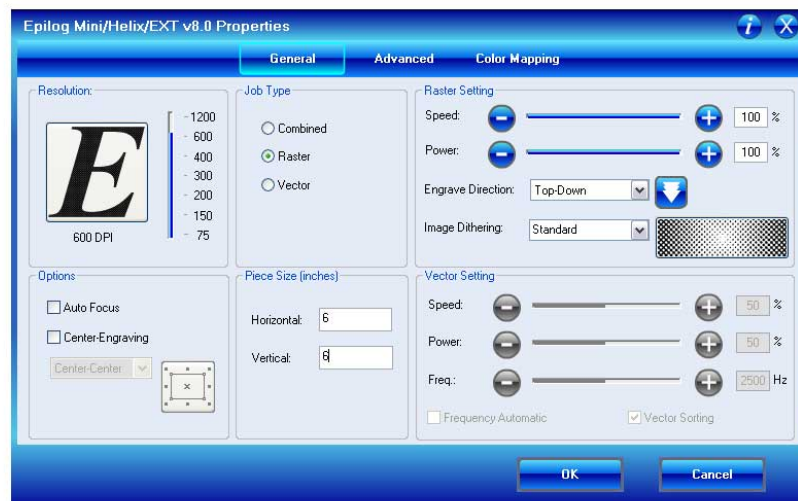
Easily create rubber stamps with adjustable shoulders, widening and fences.





## Visible Red Dot Pointer

The Zing's Red Dot Pointer provides a visible laser beam for setting up projects and to see exactly where the laser will fire. Project layout has never been easier!



## Laser Dashboard™ Printer Driver

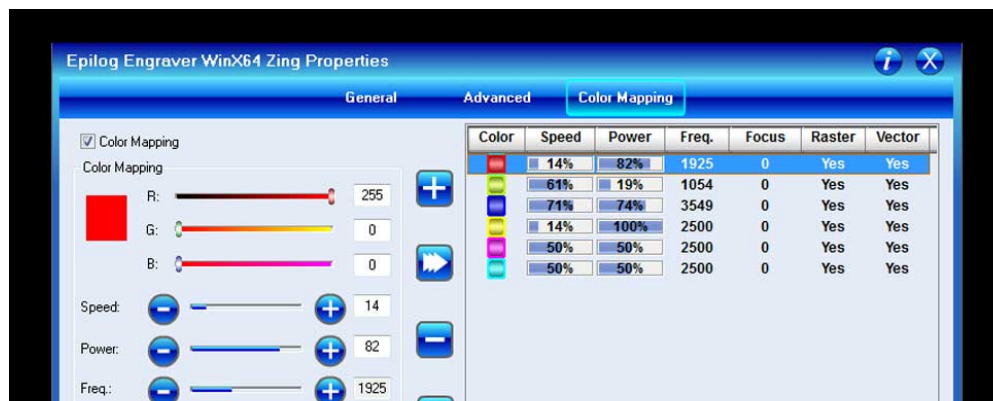
User-friendly print driver allows you to control all of the laser's features from one interface.

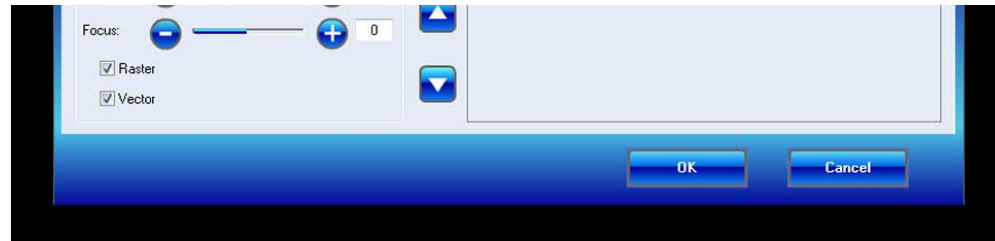




## CO2 Waveguide Laser Tubes by Epilog

All-metal tube design provides higher beam quality and longer life with low recharge costs.

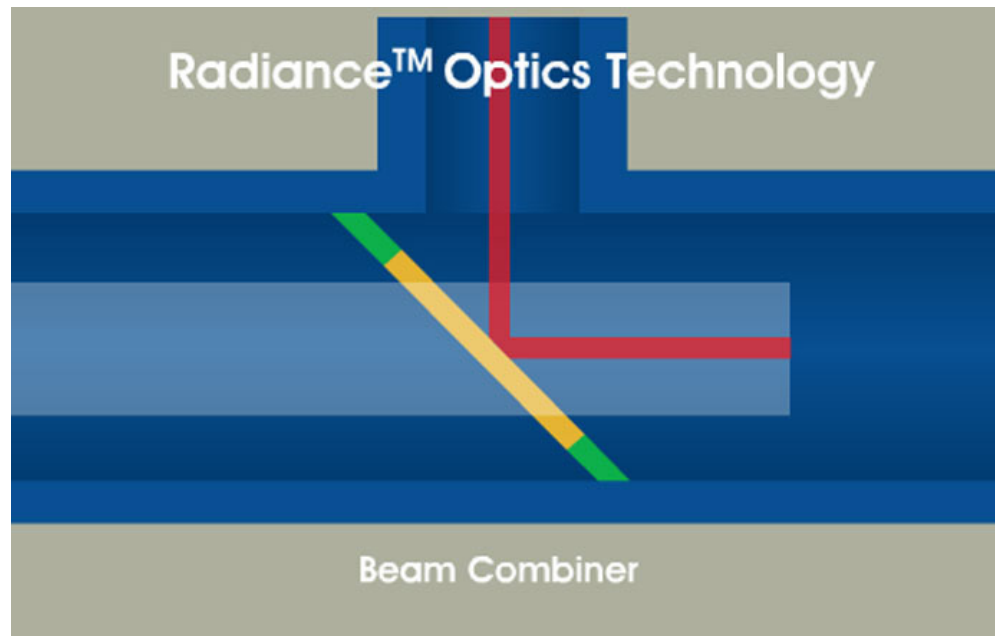




## Raster/Vector Color Mapping

Easily map different speed and power settings to different colors in your file in both engraving and cutting modes.

## Zing 24 Laser Specific Features



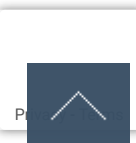
## Higher Resolution Standard Optics

No additional, expensive lens packages needed for the highest resolution engraving with our Radiance™ Optics.



## Laser Head Parking

Park the laser head out of the way, providing you with easier access to the entire table.







## Easy-Access, Drop-Down Door

Front access door for easy access to the Epilog Zing 24 laser system.





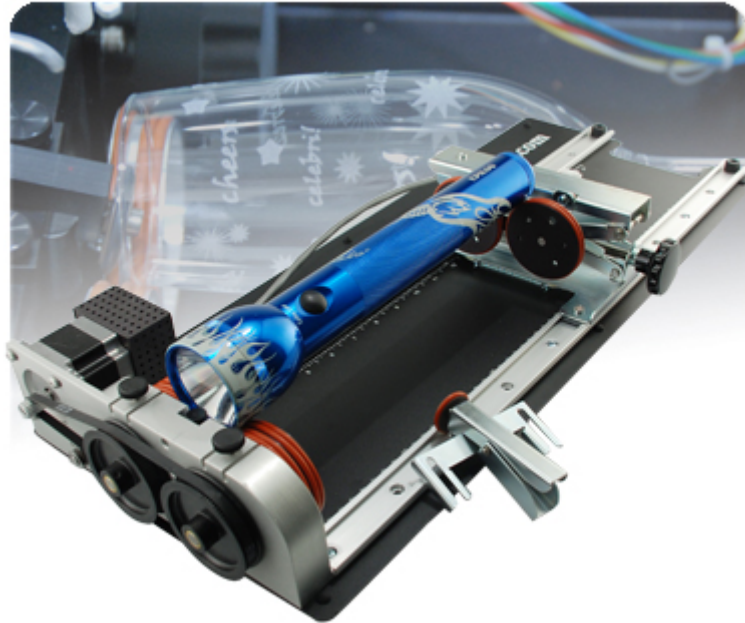
## Power Choices up to 60 Watts

Remove heat and combustible gases from the surface of the material as you cut.

## Accessories for the Zing Laser Series







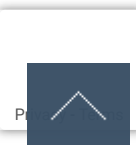
## Rotary Attachments for Cylindrical Items

Introducing the Zing 24 Laser Rotary Attachment! Now you can engrave wine bottles, mugs, glasses, flashlights or any other cylindrical item up to 5.25" (133.4 mm) in diameter on the Epilog Zing Laser.

So intuitive and easy to use, you can switch from one glass to the next in seconds - without even removing the attachment from the engraver! In addition, our proprietary design provides accurate image scaling, so there's no need to input diameter or circumference calculations.

Setup is as easy as placing your product on the Rotary Attachment, raising or lowering the scissor lift to level the engraving area, and printing to the laser!

-----



\*The Rotary Attachment is not available for the Zing 16.\*



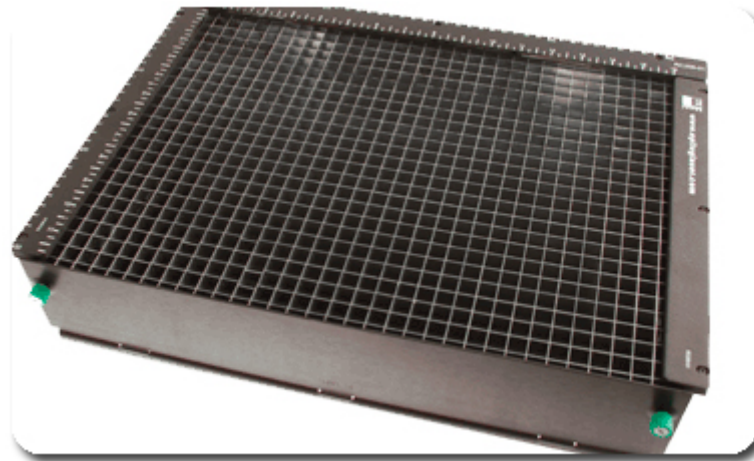
## PhotoLaser Plus Software

PhotoLaser Plus takes photo engraving with your Epilog Zing Starter Series laser to the next level by easily processing photos for engraving on all types of materials.

Are you looking for a system that engraves outstanding photographs? How about a system that engraves photos in a consistent, predictable way for your customers?



Epilog Laser has partnered with CADLink to bring you the industry's best photo processing software: PhotoLaser Plus. The easy-to-use software interface and powerful photo processing tools allow you to create the highest-quality photo engravings in the industry.

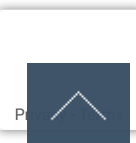


## Zing Laser Cutting Grid Insert

The Vector Cutting Grid on the Epilog Zing laser is used to lift materials being cut above the work surface. This allows the laser beam to pass cleanly through the material you are cutting and dramatically reduces underside reflections.

The air space below the vector grid is connected to the exhaust, so smoke is removed not only from the top side of the material, but also from the

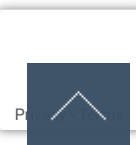
underside of the



underside.

## Epilog Zing Laser Technical Specifications

⚙️ Technical Specifications		
	Epilog Zing 16	Epilog Zing 24
Engraving Area	16" x 12" (406 x 305 mm)	24" x 12" (610 x 305 mm)
Maximum Material Thickness	4.5" (114 mm)	7.75" (197 mm)
Laser Wattage	30 or 40 watts	30, 40, 50, or 60 watts
Laser Source	State-of-the-art, digitally controlled, air-cooled CO2 laser tubes are fully modular, permanently aligned and field replaceable.	
Intelligent Memory Capacity	Multiple file storage up to 64 MB. Rolling buffer allows files of any size to be engraved.	



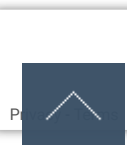
Epilog Zing 16	Epilog Zing 24
Air Assist	Attach an air compressor to our included Air Assist to remove heat and combustible gases from the cutting surface by directing a constant stream of compressed air across the cutting surface.
Laser Dashboard	The Laser Dashboard™ controls your Epilog Laser's settings from a wide range of software packages - from design programs to spreadsheet applications to CAD drawing packages.
Red Dot Pointer	Since the laser beam is invisible, the Red Dot Pointer on Epilog's Zing Laser allows you to have a visual reference for locating where the laser will fire.
Relocatable Home	When engraving items that are not easily placed at the top corner of the laser, you can set a new home position by hand with the convenient Movable Home Position feature on the Zing Laser.
Operating Modes	Optimized raster, vector or combined modes.
Motion Control System	High-speed micro stepper motors.
X-Axis Bearings	Shielded Roller Bearing Assembly on a Ceramic Coated Aluminum Guide Rail.
Belts	Advanced B-style Kevlar Belts.
Resolution	User controlled from 100 to 1000 dpi.



	Epilog Zing 16	Epilog Zing 24
Speed and Power Control	Computer or manually control speed and power in 1% increments to 100%. Vector color mapping links speed, power and focus to any RGB color.	
Print Interface	10 Base-T Ethernet or USB Connection. Compatible with Windows® XP/Vista/7/8/10.	
Size (W x D x H)	28.75" x 22.125" x 11.75" (730 x 562 x 298 mm)	38" x 27.25" x 15" (965 x 692 x 381 mm)
Weight	95 lbs (43 kg)	140 lbs (64 kg)
Electrical Requirements	Auto-switching power supply accommodates 110 to 240 volts, 50 or 60 Hz, single phase.	
Maximum Table Weight	The Zing 16 and 24 have a static table weight of 50 lbs (22.7 kg) and a lifting table weight of 25 lbs (11.5 kg).	
Ventilation System	350 - 400 CFM (595-680 m3/hr) external exhaust to the outside or internal filtration system is required. There is one output port, 4" in diameter.	

## Material Compatibility

⚙ Which materials work with a laser engraver and cutter?



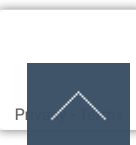
	<b>Engrave</b>	<b>Cut</b>
Wood	X	X
Acrylic	X	X
Fabric	X	X
Glass	X	
Coated Metals	X	
Ceramic	X	
Delrin	X	X
Cloth	X	X
Leather	X	X
Marble	X	
Matte Board	X	X
Melamine	X	X
Mother of Pearl	X	X
Paper	X	X
Mylar	X	X
Pressboard	X	X
Rubber	X	X
Wood Veneer	X	X



	Engrave	Cut
Fiberglass	X	X
Painted Metals	X	
Tile	X	
Plastic	X	X
Cork	X	X
Corian	X	X
Anodized Aluminum	X	
Stainless Steel	*	
Brass	*	
Titanium	*	
Bare Metals	*	
* CO2 lasers will mark bare metals when coated with a metal marking solution. For more information, visit our laser metal marking page.		
Do you have a material you would like us to test? Our Applications Team would be happy to assist you.		

---

**Request More Information**





### Receive a Brochure and Samples

Receive brochures and samples, and get more info from us or your local distributor.

**First Name \***

**Last Name \***

**Company**

**Industry**

**Address**

**City**

**State or Province**



Choose your State or Province below: ▼

**Zip or Postal Code**

Zip or Postal Code

**Country**

United States ▼

**Phone Number \***

Phone Number

**Email \***

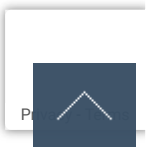
Email Address

**Where did you learn about Epilog Laser?**

Where did you learn about Epilog Laser?

**Do you have any comments or questions**

Please send information and pricing on the Zing Laser.



[Get Info!](#)

See our [Privacy Policy \(/privacy-policy.htm\)](/privacy-policy.htm)

---

## About

Epilog Laser manufactures the world's leading laser engraving and cutting systems, proudly made in the USA.

## Monthly Newsletter

Subscribe to our newsletter and stay up to date with the latest news and deals!

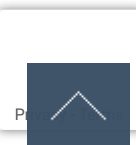
Subscribe

## Top Content



[Laser Engraving - find out how Epilog's laser engravers can create beautiful engravings \(/laser-engraving/\)](/laser-engraving/)

[\(/laser-engraving/\)](/laser-engraving/)





[Laser Cutting - nothing compares to the quality of a laser cut on many materials. \(/laser-cutting/\)](#)

[\(/laser-cutting/\)](#)



[Laser Marking - how can you affordably mark metal parts with barcodes and logos? \(/laser-marking-metal/\)](#)

[\(/laser-marking-metal/\)](#)

## Contact Us

16371 Table Mountain Parkway  
Golden, CO 80403, USA

Phone: +1 303 277 1188

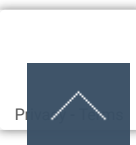
Toll Free: 888 437 4564

Tech Support: +1 303 215 9171

Email: [sales@epiloglaser.com \(mailto:sales@epiloglaser.com\)](mailto:sales@epiloglaser.com)

## Stay Connected

[\(/\)](#)



2019 © Epilog Laser. ALL Rights Reserved. [Privacy Policy \(/privacy-policy.htm\)](#) | [Choose Your Country \(/choose-your-country.htm\)](#) | [Sitemap \(http://a63595.hostedsitemaps.com/3917666/sitemap.html\)](#)

[\(/made-in-usa.htm\)](#)

