



(/).

[Made in USA \(/made-in-usa.htm\)](#)

[Home \(/index.htm\)](#) / [Laser Machines \(/laser-machines/product-line.htm\)](#) / [G2 Galvo Series](#)

[Get a Free Brochure and Samples →](#)

[\(/contact/request-information.htm\)](#)

Epilog's G2 Galvo Laser

[Request Information](#)



[See the Video](#)



Epilog G2 Galvo Laser Series

Introducing the new G2 Galvo laser from Epilog Laser. Utilizing a unique dynamic-focus lens technology, the G2 allows you to change your engraving area from 4" x 4" (101 x 101 mm) to 16" x 16" (406 x 406 mm) all the way up to 24" x 24" (609 x 609 mm).

- **Laser Source:** Fiber

Laser (1064 nm) - Fixed Pulse or Variable Pulse (MOPA)

- **Work Area:** Maximum 24" x 24" (609 x 609 mm)
- **Fiber Wattages:** 30 or 50 watts
- **Materials:** Directly engrave into most metals and mark engineered plastics.

G2 Galvo Laser Series: Metal Etching Laser Engraver

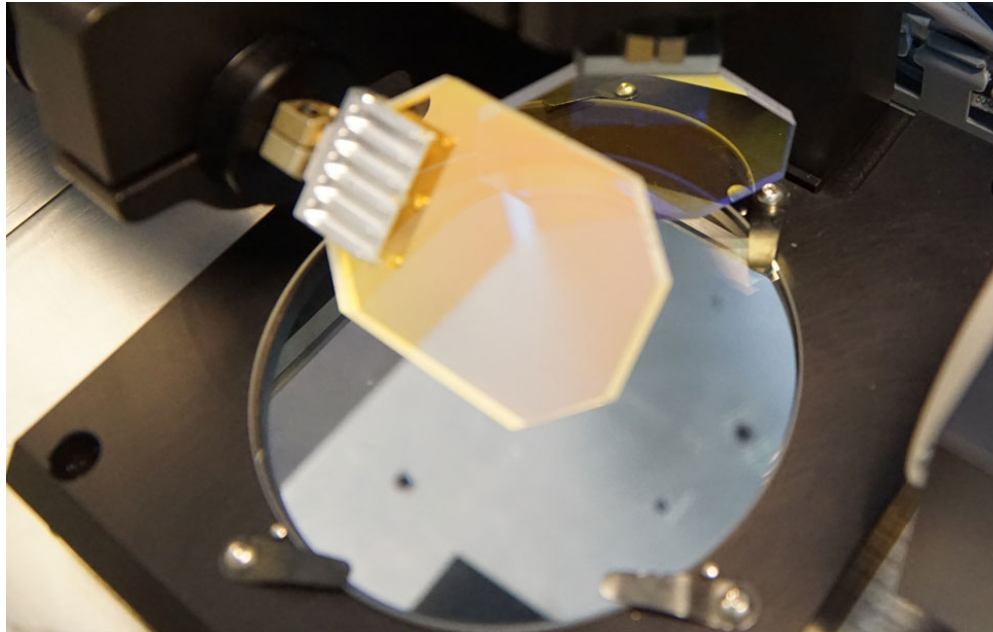
[Privacy - Terms](#)



Request Information

Features: Benefits of Epilog's G2 Laser System

The G2 laser series from Epilog provides a unique combination of high-speed laser engraving and marking and a large work area. Place an entire large piece, such as a gunstock or large gear, or even an entire table full of pieces and engrave them all at one time.



[Privacy - Terms](#)

Highest-Speed Engraving Over Largest Work Area

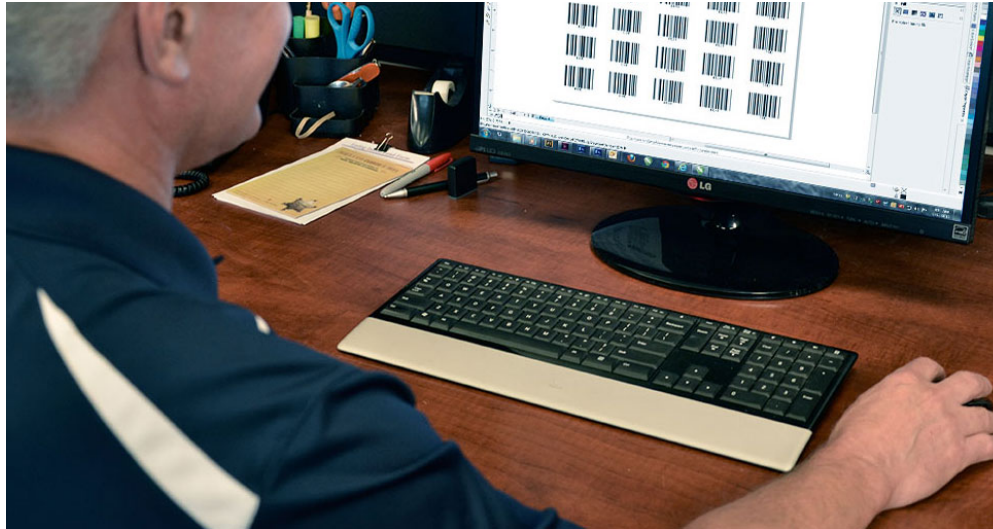
The galvo beam delivery of the G2 is enhanced with a moving dynamic-focus lens for even engraving over a large area.



Adjustable Engraving Area

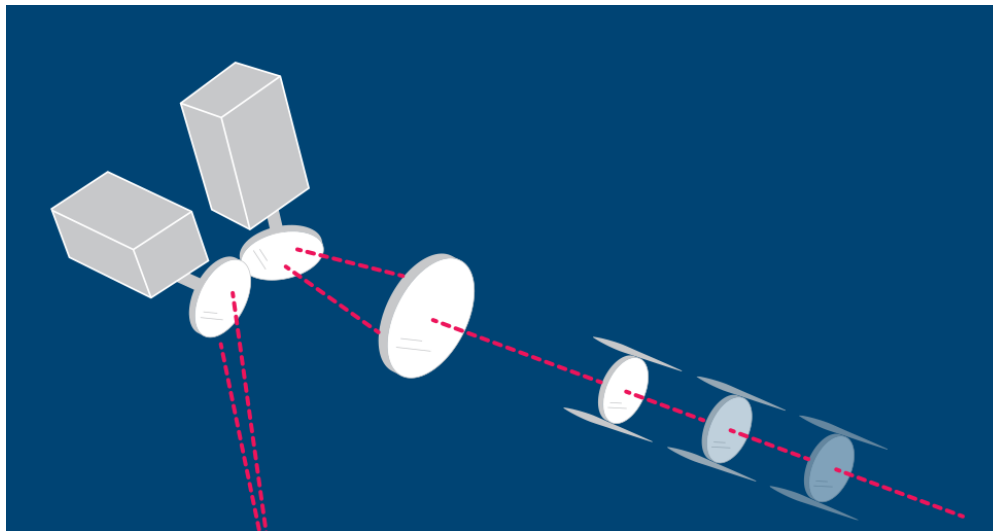
Quickly change between a 4" (101 mm), 16" (406 mm) and 24" (609 mm) etching area based on your marking needs - all inside a Class 2 laser system enclosure.





Use the Software of Your Choice

Create your projects for the laser using the software you already use - AutoCAD, CorelDRAW, Illustrator, BarTender, and more.





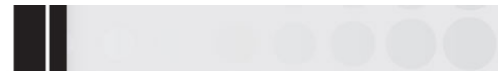
Telescoping Dynamic Focus Lens

A telescoping third-axis lens moves on the horizontal axis to adjust the focal distance across the table.



Engineered and Manufactured in the USA

Proudly designed, engineered and manufactured in our Golden, CO headquarters at the base of the Rocky Mountains.

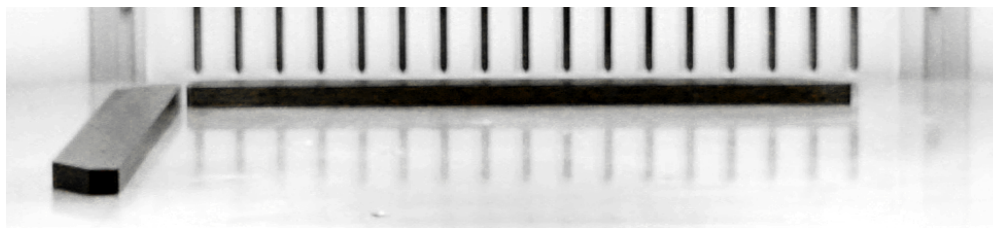




Change Your Work Area without Changing Lenses

Choose your engraving area - up to 24" x 24" (609 mm) - by selecting the table size on the keypad without the need to change lenses between marking jobs.





Louvered Ventilation for Less Maintenance

The better your system is vented, the cleaner it will be. Open and close louvers to optimize the ventilation in your engraving space.



Fit Your Largest Parts on the Table

The marking area will fit up to 29" x 27" x 36.3" (736 x 685 x 922 mm) parts and tools within the safety-enclosed Class 2 laser cabinet.



Incredibly Fast 2m/sec Marking Speeds

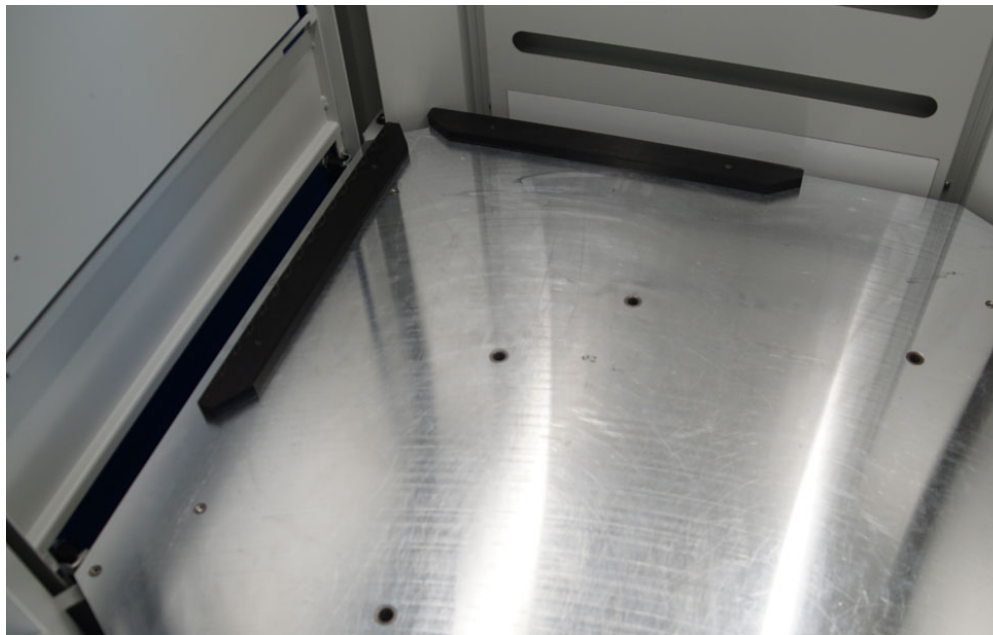
Take advantage of the G2 laser's high-speed etching with marking speeds up to 2 meters per second for the highest quality at the fastest speeds.





Easily Change Between Deep and Surface Etching

Quickly adjust your marking depth between surface marks and deep engraving by simply changing your laser's settings in the print driver.



Repositionable Guides for Corner Placement

For traditional top-left engraving, the G2 features moveable edge guides

that can be placed on the table for each engraving area size.



Non-Contact Marking: No Bits to Replace

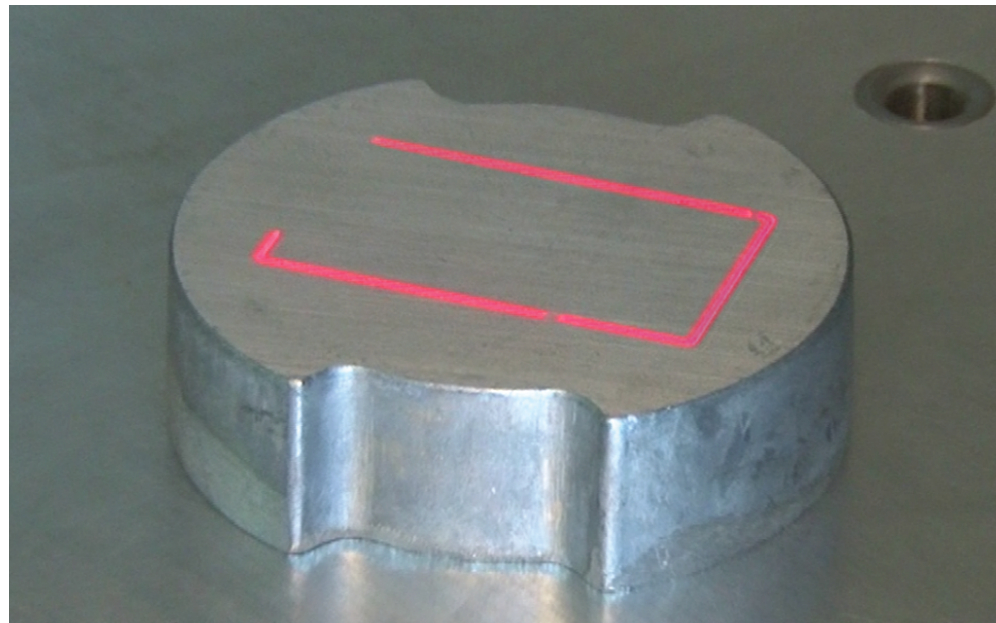
There is no need to brace parts or replace expensive engraving bits or tools with our fiber laser systems.





Mark and Etch a Wide Variety of Materials

Etch almost any metal and mark many plastics with the 1064 nm wavelength of our fiber laser systems.



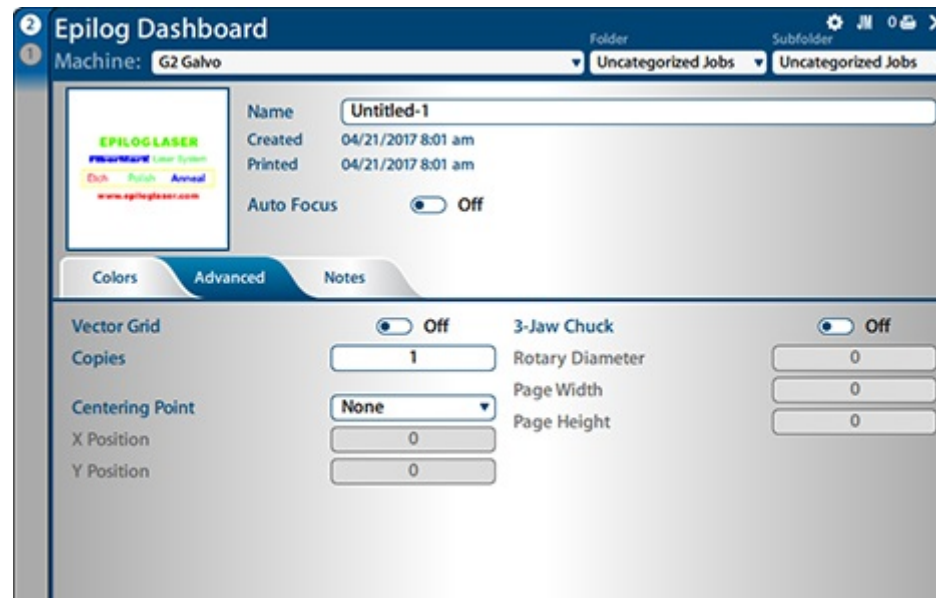
Visible Red Dot Laser Tracing Feature

Precisely position your marking by utilizing the Trace Feature that will create a visible red line around the area you will be marking.



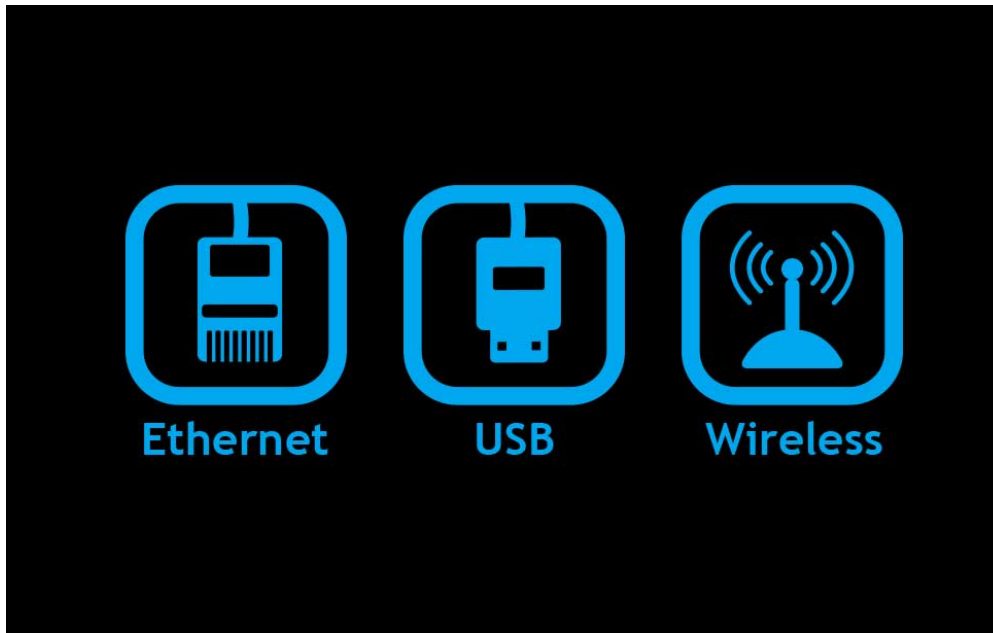
Create Multiple Styles of Marks

Create the marked or etched look on your part that fits your needs by adjusting the laser's speed, power, frequency, and focus.



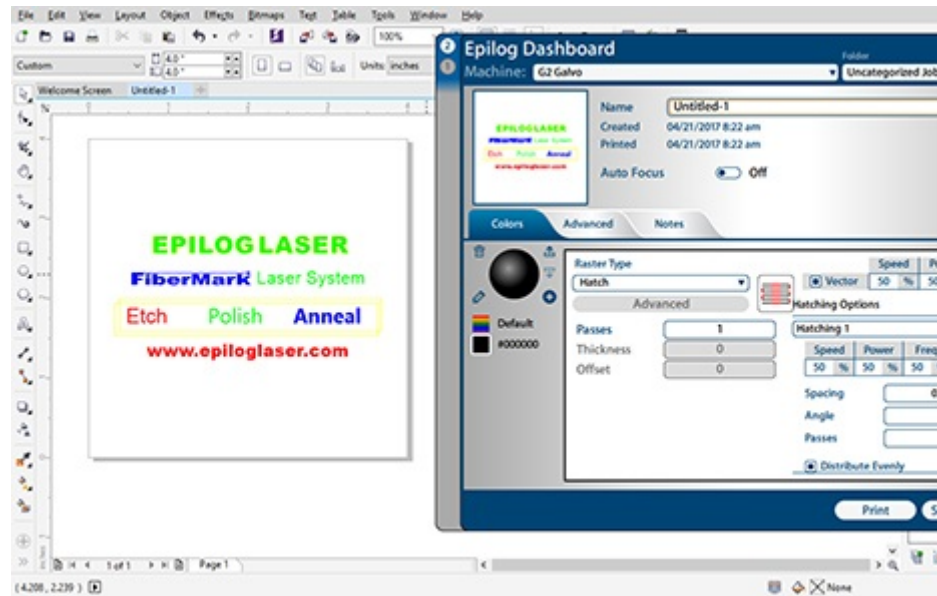
Laser Dashboard Print Driver

A user-friendly print driver allows you to control all of the laser's features from one convenient interface.



Network Your Laser Across Your Business


Communicate with your laser through Ethernet, USB or even wirelessly for the most simple networking available.



Raster/Vector Color Mapping

Easily map settings to various colors in your file in order to control speed, power, and other variables.

Epilog G2 Galvo Laser Technical Specifications

 Technical Specifications	
Epilog G2 Galvo Series	
Engraving Area	Up to 24" x 24" (609 mm)
Maximum Material Thickness	4" x 4" (101 mm): 36.3" (923 mm) 16" x 16" (406 mm): 25.98" (660 mm) 24" x 24" (609 mm): 15.79" (401 mm)
Maximum Piece Size	All table sizes: 29" x 27" (736.6 x 685.8 mm)
Laser Wattage	30 or 50-watt fiber laser, Fixed Pulse or Variable Pulse (MOPA), air cooled.
Standard Features	.5" (12.7 mm) machined aluminum table, 2 meter/second maximum marking speed.
Print Driver & Software	Laser Dashboard, Epilog Job Manager. Print from most Windows-based CAD and graphic software packages.
Operating Modes	Optimized Vector Mode

Epilog G2 Galvo Series	
Speed and Power Control	Computer controlled speed and power in 1-100% increments. Color mapping links speed and power.
Print Interface.	10/100 Ethernet with Auto MDIX. Compatible with Windows 7/8/10.
Size (W x D x H)	33" x 43.75" x 71.1" (838.2 x 1111.25 x 1805.94 mm)
Weight	415 lbs (188.2 kg)
Electrical Requirements	Auto-switching power supply accommodates 110 to 240 volts, 50 or 60 Hz, single phase.
Ventilation System	650 CFM (1104 m3/hr) external exhaust to the outside or internal filtration unit is required. There are two output ports, each 4" (102 mm) in diameter.
Laser System Classification	Class 2 Laser Product - 1 mW CW MAXIMUM 600-700 nm.

Material Compatibility

Epilog's fiber laser systems can etch and mark a wide variety of plastics and metals. Below is only a sample of some of the materials that have been marked with one of our fiber laser systems.

- 17-4 PH stainless steel
- 303 stainless
- 4043 steel

- 6061 Aluminum
- ABS (white/black)
- Aluminum, 6061
- Aluminum, yellow chromate
- Bayer 2807 Makrolon polycarbonate
- Bayers bayblend FR110
- Black/white ABS
- Black/white polycarbonate
- Brass
- Brushed aluminum
- Carbon nanotube
- Ceramics, metal-plated
- Clear coat anodized aluminum
- Cobalt chrome steel
- Colored delrin (black/brown)
- Compacted powder iron with phosphate coating
- Copper
- DAP - Diallyl Phthalate
- Delrin, colored (black/brown)
- GE Plastics polycarbonate resin 121-R
- Glass filled PEEK
- Glass filled Teflon
- Hard coat anodized aluminum
- Inconel metals (various)
- Machine tool steel

- Magnesium
- Metal-plated ceramics
- Molybdenum
- Nickel plated 1215 mild steel
- Nickel plated brass
- Nickel plated gold
- Nickel plated Kovar

- Nickel plated steel
- Nylon
- PEEK, white
- Polybutylene Terephthalate
- Polycarbonate (black/white)
- Polycarbonate resin 121-R, GE Plastics
- Polycarbonate, Bayer 2807 Makrolon
- Polysulphone
- Rynite PET
- Santoprene
- Silicon carbide
- Silicon steel
- Silicone wafers
- Stainless steel 303
- Stainless steel 17-4 PH
- Steel 4043
- Steel, machine tool
- Various inconel metals (nickel-chromium super alloys)
- White PEEK
- Yellow chromate aluminum
- Zinc plated mild steel
- And Many More!

Request More Information

Receive a Brochure and Samples

[Privacy - Terms](#)

Receive brochures and samples, and get more info from us or your local distributor.

First Name *

Last Name *

Company

Industry



Address

City

State or Province



Zip or Postal Code

[Privacy - Terms](#)

Country

Phone Number *

Email *

Where did you learn about Epilog Laser?

Do you have any comments or questions

Get Info!

See our [Privacy Policy \(/privacy-policy.htm\)](/privacy-policy.htm)

Privacy - Terms

About

Epilog Laser manufactures the world's leading laser engraving and cutting systems, proudly made in the USA.

Monthly Newsletter

Subscribe to our newsletter and stay up to date with the latest news and deals!

Top Content



[Laser Engraving - find out how Epilog's laser engravers can create beautiful engravings \(/laser-engraving/\)](#)

[\(/laser-engraving/\)](#)



[Laser Cutting - nothing compares to the quality of a laser cut on many materials. \(/laser-cutting/\)](#)

[\(/laser-cutting/\)](#)



[Laser Marking - how can you affordably mark metal parts with barcodes and logos? \(/laser-marking-metal/\)](#)

[\(/laser-](#)

[marking-metal/](#)

Contact Us

16371 Table Mountain Parkway

Golden, CO 80403, USA

Phone: +1 303 277 1188

Toll Free: 888 437 4564

Tech Support: +1 303 215 9171

Email: [sales@epiloglaser.com \(mailto:sales@epiloglaser.com\)](mailto:sales@epiloglaser.com)

Stay Connected

[\(/\)](#)

2019 © Epilog Laser. ALL Rights Reserved. [Privacy Policy \(/privacy-policy.htm\)](#) | [Choose Your Country \(/choose-your-country.htm\)](#) | [Sitemap \(http://a63595.hostedsitemaps.com/3917666/sitemap.html\)](#)

[\(/made-in-usa.htm\)](#)

[Privacy - Terms](#)