

## Electra Portable Violet Laser Module Laserglow Part Number: GEP005XXX



### Similar Products:

For information about the other lasers in this product family visit:

<http://www.laserglow.com/GEP>

### Ordering:

Order Online Now or Request Quote:

<http://www.laserglow.com/GEP005XXX>

### Series Specifications:

Nominal Wavelength	405 nm
Output Type	CW
Laser Source Type	Diode



May not be exactly as shown. See dimensional drawing for details.

### Overview:

The shortest wavelength available in a laser pointer, the Electra produces laser light very close to the ultraviolet part of the visible spectrum at 405 nm. The unique properties of this laser include the ability to excite fluorescent and phosphorescent materials. The Electra can be a useful educational tool in the classroom as well as a reliable near-UV portable light source for field work.

### Key Features:

- *Starting at:* **\$239**
- *Output Power:*
- *Expected Life:* 5000 hours
- *Wavelength:* 405 nm (violet)
- *Key Feature:* Violet beam causes fluorescence effect in various materials
- *Package Includes:* Portable laser, aluminum carrying case, instructions/warranty.
- *Casing:* High-gloss black painted brass housing
- *Safety Info:* Under 5 mW complies with Class IIIa regulations
- *Duty Cycle:* 100%

## Specifications:

This spec sheet has been generated specifically for part number GEP005XXX, per your request, and data for the entire series is also displayed for your reference. The specs which are specific to GEP005XXX have been highlighted below in **red + bold**.

Laser Form Factor	<b>GAP</b>
Output Power (mW)	<b>&lt;5</b>
FDA Safety Class	<b>IIIa</b>
Central Wavelength (nm)	<b>405</b>
Divergence (mrad, full angle)	<b>&lt;0.5</b>
Beam Diameter (mm, 1/e <sup>2</sup> )	<b>3.5</b>
Transverse Mode	<b>Near TEM00</b>
Longitudinal Modes	<b>Multiple</b>
Approximate Peak Power (W)	<b>5</b>
Operating Temperature Range (°C)	<b>20 to 35</b>
Storage Temperature Range (°C)	<b>-10 to 50</b>
Total Power Consumption (W)	<b>3</b>
Max. Power Input Duty Cycle	<b>100%</b>
Cooling Method	<b>Passive Air</b>
Standard Warranty (months)	<b>6</b>
MTTF (operational hours)	<b>5000</b>
Weight of Laser Head (kg)	<b>0.1</b>
Laser Head Dimensions (mm)	<b>150 (l) x 16.5 (d)</b>
Power Supply	<b>2 x CR2 Batteries</b>

CW: All specifications are based on performance at full output power and after the specified warmup period. Output characteristics may change if the laser is run at a different power level.

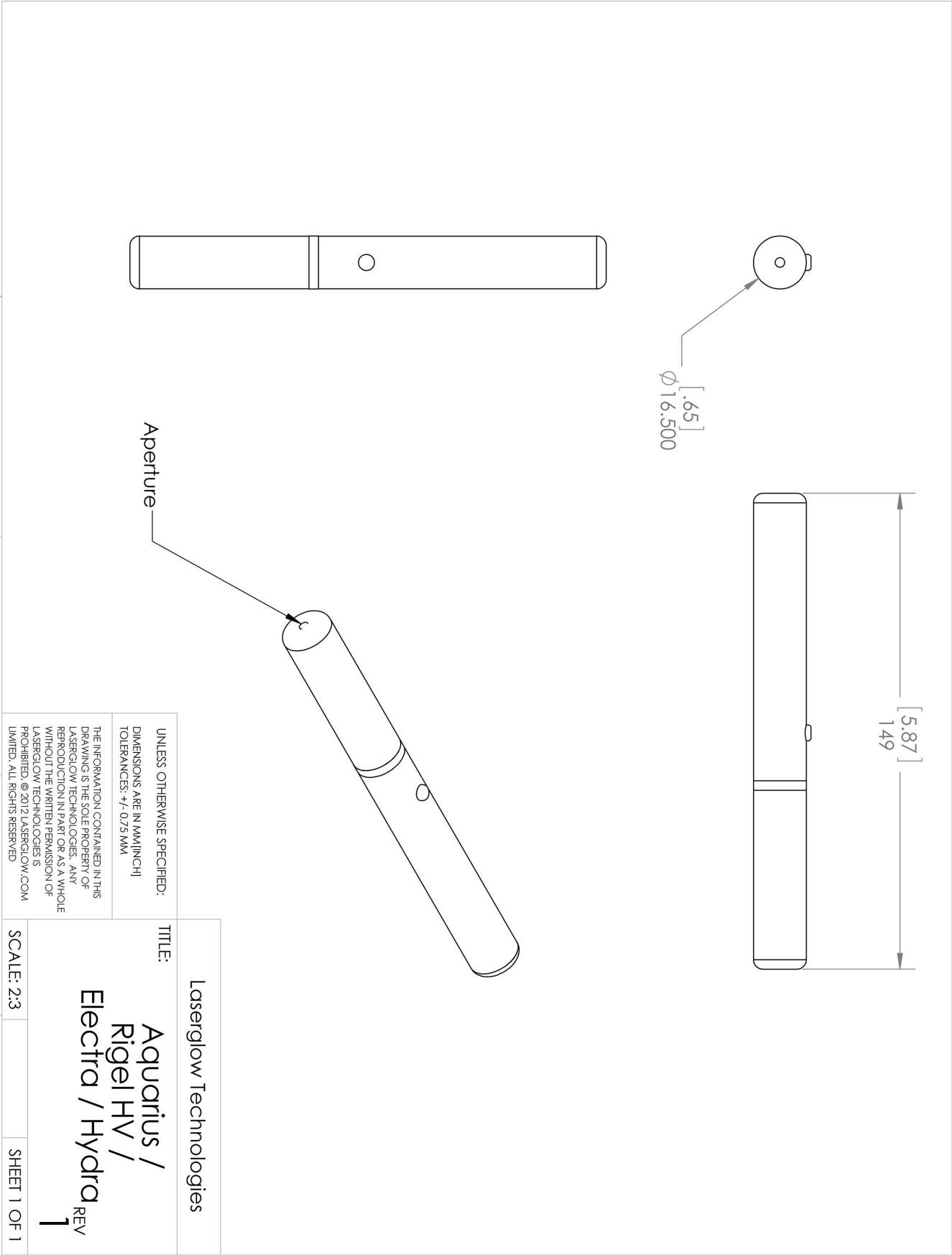
Q-Switched: Specifications are based on the laser pulsing at the specified design frequency. Output characteristics may change if the laser is run at a different frequency.

Regulatory Classification:

The model you have selected (GEP005XXX) requires the following safety label(s):







Dimensional Drawing - Laser Form Factor: GAP:



## Accessories:

The most popular accessories for model GEP005XXX are shown below. For additional details regarding these or other accessories please see our website or contact us directly.

Part Number	Description	
 AGF5322XX	LSG-532-NF-2 Fit-Over Safety Goggles 532nm Output: OD 2+ at 400-532 nm CE Certified Full Details: <a href="http://www.laserglow.com/AGF">www.laserglow.com/AGF</a>	
 AGS5322XX	LSG-532-NS-2 Sport Laser Safety Goggles 532nm Output: OD 2+ at 400-532 nm CE Certified Full Details: <a href="http://www.laserglow.com/AGS">www.laserglow.com/AGS</a>	
 AGF5327XX	LSG-532-NF-7 Fit-Over Safety Goggles 532nm Output: OD 7+ at 190-532 nm CE Certified Full Details: <a href="http://www.laserglow.com/AGF">www.laserglow.com/AGF</a>	
 ACAGAQ1XX	Carrying Case-7 Aquarius/Electra/Rigel HV/Hydra Full Details: <a href="http://www.laserglow.com/ACA">www.laserglow.com/ACA</a>	Included With Laser

## FOR MORE INFORMATION PLEASE CONTACT:

LASERGLOW TECHNOLOGIES  
873 St. Clair Ave West, Toronto, ON, Canada M6C1C4  
Tel. (416) 729-7976 Fax (480) 247-4864  
[sales@laserglow.com](mailto:sales@laserglow.com) [www.laserglow.com](http://www.laserglow.com)

E&OE: Data included in this sheet may be subject to change without notice.  
Please confirm critical specifications with our staff prior to ordering.