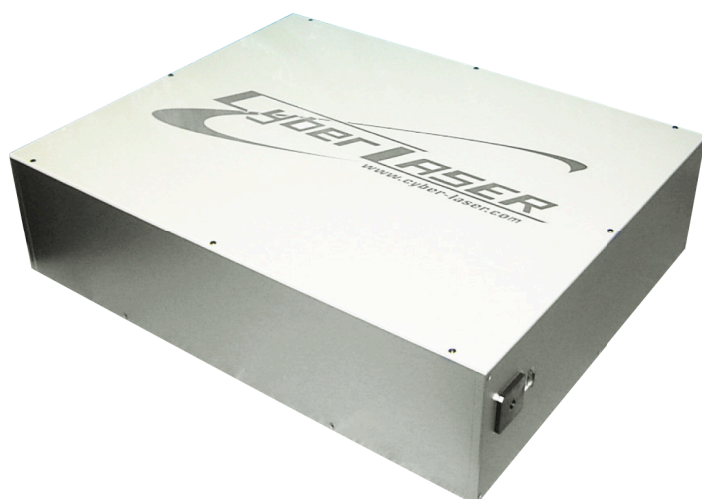


# ALTAIR



## Deep ultra-violet CW Laser ALTAIR



Characteristics	A continuation wave, single frequency Highly stable output power and Poyinting PC controllable Spatial profile Higher power available Internal power monitor built-in Power feedback
Options	Beam position Spectral tunable type

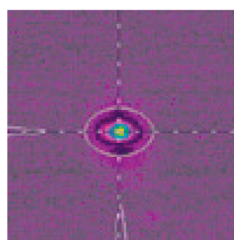
A completely new light source "ALTAIR" can successfully produce continuous wave laser light in UV to deep UV region.

A novel technology of wavelength conversion of Cyber Laser now begins to give high-tech customers a valuable laser source.

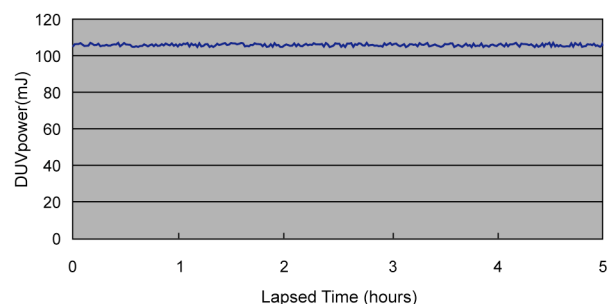
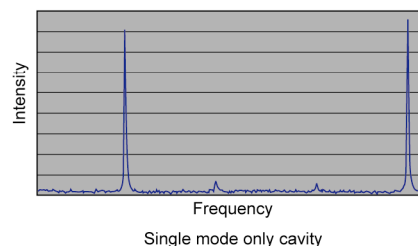
ALTAIR will bring innovation onto semiconductor industry and biological industry, for it make possible to inspection and processing of micro-structured materials.

Product name	ALTAIR	
Laser medium	Nd:YVO4	
Oscillator type	Continuation wave	
Wavelength( $\lambda$ )	266 nm	
	244,248 nm	
	213 nm	
	< 200 nm	
Power	266nm	1 W
	244nm	50 mW
	213nm	100 mW
	<200nm	100 mW
Output energy stability	2%	
Beam diameter	2mm	
Beam stability	< $\pm 10\mu\text{rad}/^\circ\text{C}$	
Spatial beam quality	TEM <sub>00</sub>	
Size*	W550 x D680 x H180	
Weight*	50kg	

\*ALTAIR266



A good beam quality



Output stability of the DUV output power (with no output control)