

# Stabilized Compact Red CrystaLaser®

High reliability High stability Single longitudinal mode Circular beam

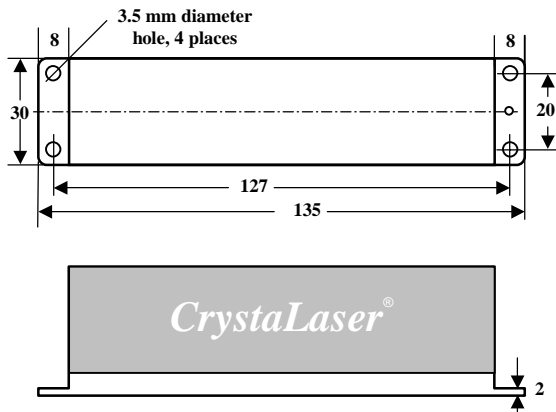
## SPECIFICATIONS

Wavelength	Option ± 1 nm available	Low noise version, Model No.				SLM version, Model No.			
633 ± 1 nm		DL633-080	80 mW	DL635-025	25 mW	DL633-050-S	50 mW	DL633-025-S	25 mW
635 ± 1 nm		DL633-050	50 mW	DL635-025	25 mW	DL635-050-S	50 mW	DL635-025-S	25 mW
638 ± 2 nm		DL635-080	80 mW	DL638-050	50 mW	DL638-100-S	100 mW	DL638-050-S	50 mW
		DL638-070	70 mW	DL638-025	25 mW	DL638-070-S	70 mW	DL638-025-S	25 mW
642 ± 4 nm		DL640-100	100 mW	DL640-050	50 mW	DL640-070-S	70 mW	DL640-025-S	25 mW
	647 ± 1 nm option available	DL640-070	70 mW	DL640-025	25 mW	DL640-050-S	50 mW		
660 ± 5 nm		DL660-100	100 mW	DL660-025	25 mW	DL660-050-S	50 mW	DL660-025-S	25 mW
	655 ± 1 nm option available	DL660-050	50 mW						
690nm, 705nm, 730 nm ± 5 nm		DL690-050	50 mW	DL730-050	50 mW	DL690-050-S	50 mW	DL690-030-S	30 mW
785 ± 5 nm	780 nm SLM available	DL785-120	120 mW	DL785-100	100 mW	DL785-120-S	120 mW	DL785-100-S	100 mW
Longitudinal mode		Multiple				Single longitudinal mode			
Spectrum linewidth		1 nm, typical				< 0.00001 nm or <10 MHz			
Coherence length		< 0.3 mm				> 10 meters or >100 meters option			
Output noise (rms, 10Hz-50MHz)		< 0.5 %				< 0.5 %			
Output stability over 24 hours (rms)		< 1 %; Option: ultra-stable version < 0.25%				2 % Option: ultra-stable version < 0.5%			
Modulation options		TTL 200Hz, 50kHz, 20MHz, 100 MHz, 200MHz; Analog control, Analog modulation				TTL on/off option			
Transverse mode		Circular beam, close to TEM <sub>00</sub> , M <sup>2</sup> = 1.1 - 1.3							
Beam diameter (1/e <sup>2</sup> )		1.1 mm	Option: 0.7X - 3X laser beam expanders are available to change beam size and divergence. e.g. 0.8 mm beam with 1.3 mrad divergence; or 2.5 mm beam with 0.4 mrad divergence						
Beam divergence		1 mrad							
Beam pointing stability		< 0.005 mrad/°C							
Polarization ratio		100:1; Vertical linear polarization							
Operation temperature		5 °C to 40 °C, internal TEC temperature-stabilized, no additional heat sink required							
Warm-up time		< 30 seconds							
Operation voltage		90-250 VAC or 12VDC OEM version 11-16VDC							
Dimensions and weight of laser head		3 x 3.6 x 13.5 cm <sup>3</sup> (1.2 x 1.4 x 5.3 in <sup>3</sup> ), 0.3 kg (0.6 lb)							
Dimensions and weight of power supply		Standard AC: 5 x 14 x 15 cm <sup>3</sup> (2 x 5.5 x 6 in <sup>3</sup> ), 0.5 kg (1 lb); CL-2005 power display AC: 5 x 16 x 15 cm <sup>3</sup> 12 VDC OEM version: Integrated inside the laser head.							

**Applications:** Holographics, Flow cytometry, Fluorescence, Confocal microscopy, Raman Spectroscopy

**Fiber coupling option:** Single mode and multi-mode fiber delivery.

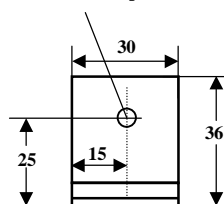
**CL-2005 power supply option:** Power adjustable and power digital display.



All dimensions in mm

Front View

Laser beam is output from this aperture



Made in the USA