



20W MOPA Fiber Laser Marking Machine Quotation

Main configurations

- #Marking area: 110*110mm (Max for 300*300mm)
- #20W JPT M1+ MOPA laser source
- #Sino brand galvo head with double red pointer
- #Singapore Wavelength brand F-theta lens
- #Original EZCAD software
- #Original Beijing JCZ control system supporting updating Win7, Win 8, Win 10 system
- #Supported Photoshop, Coral draw and format AI, PLT, DXF, BMP, DST, DWG, DXP etc.
- #Protection glasses
- #Laptop or PC
- #Templates for color marking

Optional

Rotary device

Extra lens



Mini type



Desktop type

Application

Fiber laser laser marking machine can work with most metal marking applications, such as Gold, Silver, Stainless Steel, Brass, Aluminum, Steel, Iron etc, and can also mark on many non-metal materials, such as ABS, Nylon, PES, PVC, Makrolon, plastic, etc.

Advantage

A MOPA laser source is a great way to expand your marking capabilities and improve the quality of your marking results on certain plastics and metals.



1. Selectable pulse duration not only improve laser marking results on certain metals and plastics, but also provide more marking capabilities.
2. With the MOPA laser, the pulse duration can be set to predefined values between 10 and 350 ns. Because it offers such a wide range of pulse duration, the MOPA is one of the most flexible lasers on the market.
3. It can simulate the properties of conventional fiber laser markers, You can also produce qualitatively equivalent markings with the MOPA laser partially faster than with the conventional fiber laser marker.
4. Using short pulses and lower pulse energy heat the material less, and the area of the heat affected zone is reduced. This results in more advantages and possibilities for laser marking metals and plastics.

Less burning/melting in the edge area of metal engravings
 Less heat development during annealing markings on metal, which leads to a better corrosion behavior
 Creation of reproducible annealing colors on stainless steel
 Black marking of anodized aluminum
 Controlled melting of plastics
 More homogeneous and sometimes higher-contrast markings on some plastics

5. The advantages of the conventional fiber laser sources remain unchanged:

Maintenance-free
 Long service life
 Air-cooled
 Cost-effective

Technical parameters

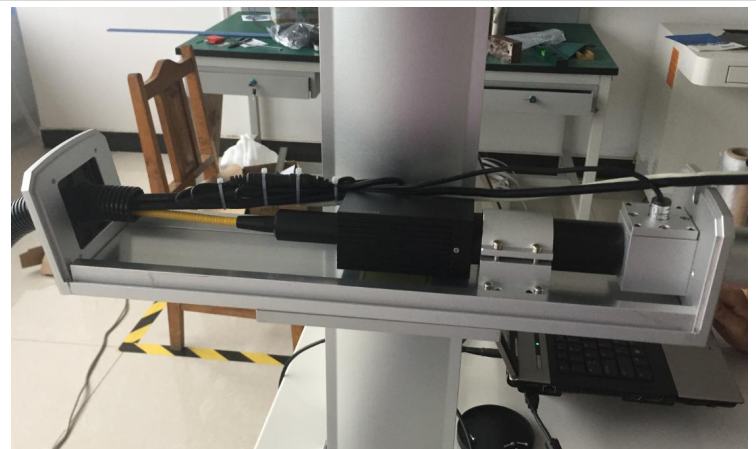
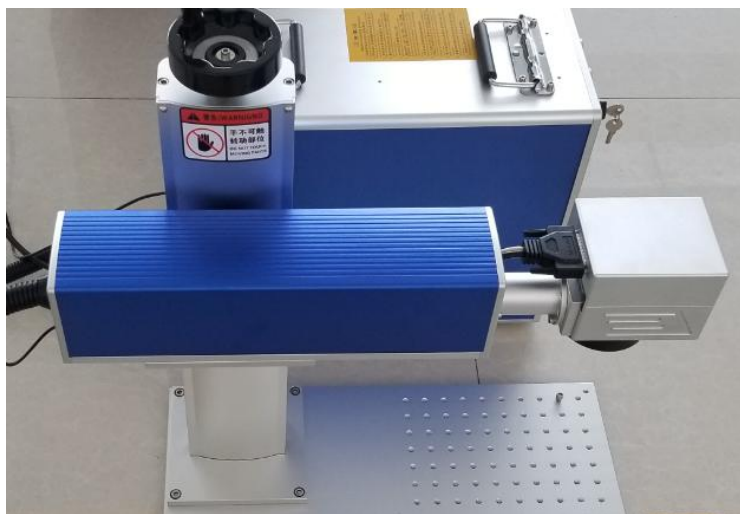
| | |
|----------------------------------|------------|
| Model | STJ-20FM |
| Output Power | >20W |
| Laser Wavelength | 1064nm |
| Fiber Cable Length | 2m |
| Pulse Width | 6-250ns |
| Pulse Repetition Rate Range | 1-2000kHz |
| Full power Repetition Rate Range | 40-2000kHz |
| M2 | <1.3 |
| Max.Single Pulse Energy | 0.5mJ |
| Output Power Stability | <5% |



| | |
|----------------------------|--|
| Output Beam Diameter | 7±0.5mm |
| Power Range | 0%-100% |
| Anti-Reflection Protection | Yes |
| Marking Range | 100*100mm/200*200mm/300*300mm |
| Minimum Line Width | 0.01mm |
| Minimum Character | 0.1mm |
| Marking Speed | ≤7000mm/s |
| Marking Depth | Depend on materials |
| Repeatability Accuracy | ±0.001mm |
| Marking Format | Graphics, text, bar codes, QRcode, automatically date, batch number, serial number, etc. |
| Graphic format supported | Ai, plt, dxf, dst, svg, nc, bmp, jpg, jpeg, gif, tga, png, tiff, tif |
| Working Voltage | 220V±10%/50Hz or 110V±10%/60Hz or customized |
| Unit Power | <0.5kw |
| Working Environment | Clean and dust free or dust less |
| Working Condition Humidity | 5%-75%, 0-40 degree, free of condensed water |
| Laser lifetime | >100000 hours |

Main Parts

Fiber laser marking machine Chamber, compact and safe.





JINAN STYLE MACHINERY CO.,LTD

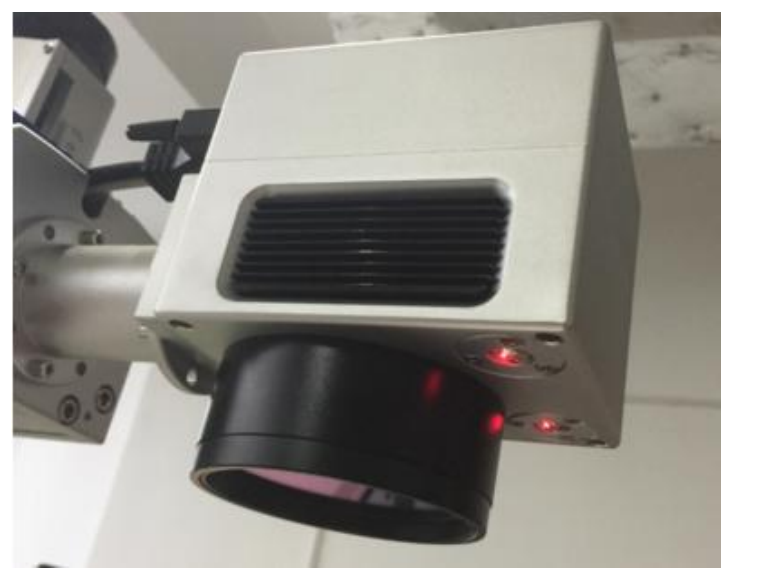
CNC ROUTER CNC LASER PLASMA CUTTER



China professional fiber laser source, it has over 100,000 hours working life. Almost no maintenance during this period.



High speed scanning galvo mirror: Providing high speed precise marking/engraving.



BJJCZ control card, can be used in many applications like serial number marking, data marking, text/logo/graphic marking, barcode, 2d code etc.

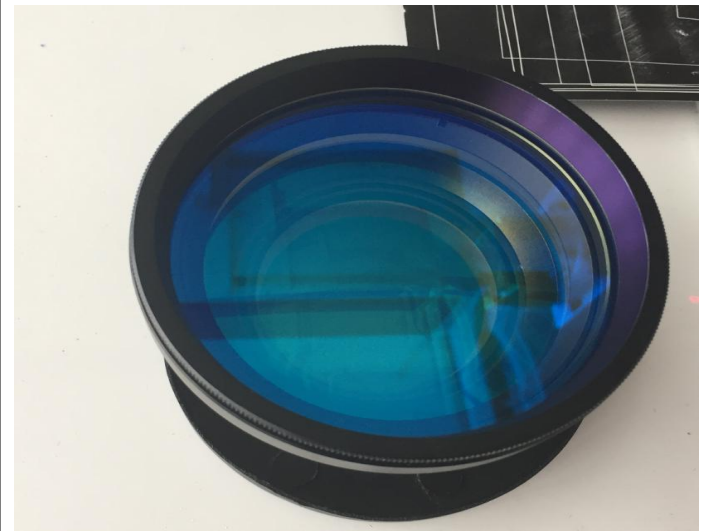
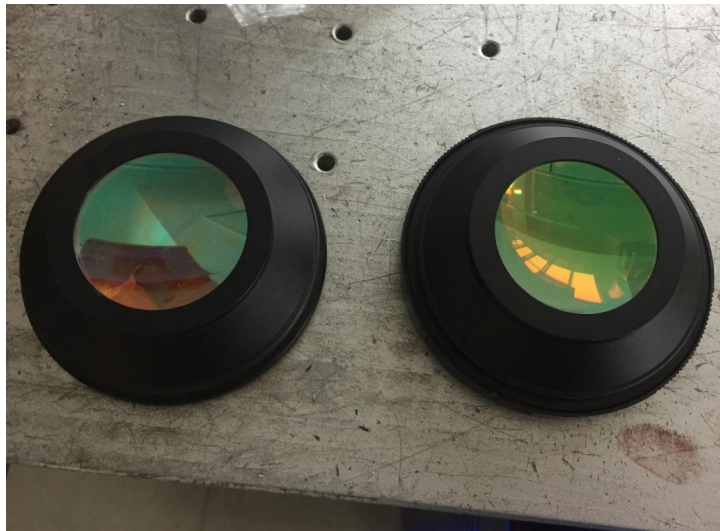


JINAN STYLE MACHINERY CO.,LTD

CNC ROUTER CNC LASER PLASMA CUTTER



Various lens for different marking size: F=100mm/160mm/254mm/300mm/420mm



Necessary parts attached with machine delivery.



Plywood case for export package



JINAN STYLE MACHINERY CO.,LTD

CNC ROUTER CNC LASER PLASMA CUTTER



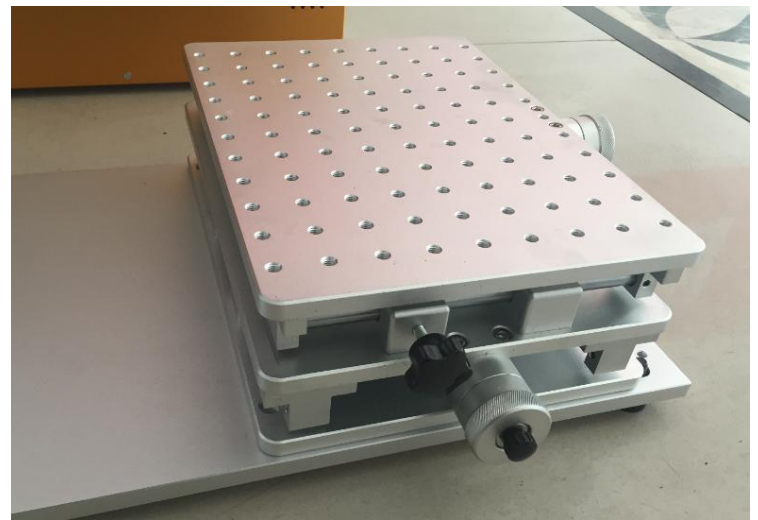
mini type



Desktop

Optional parts

2D dimension table:160\$





JINAN STYLE MACHINERY CO.,LTD

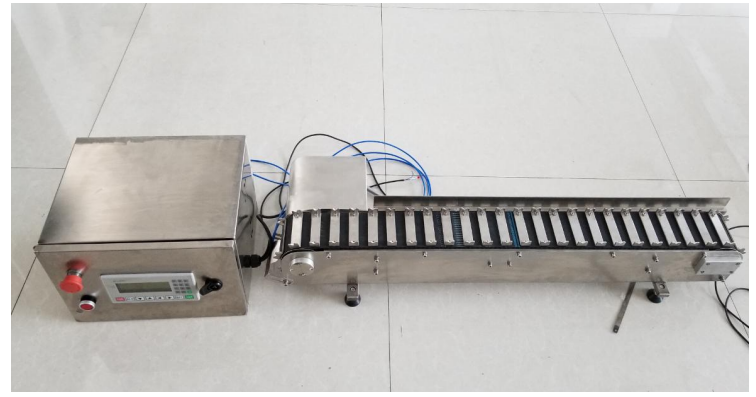
CNC ROUTER CNC LASER PLASMA CUTTER



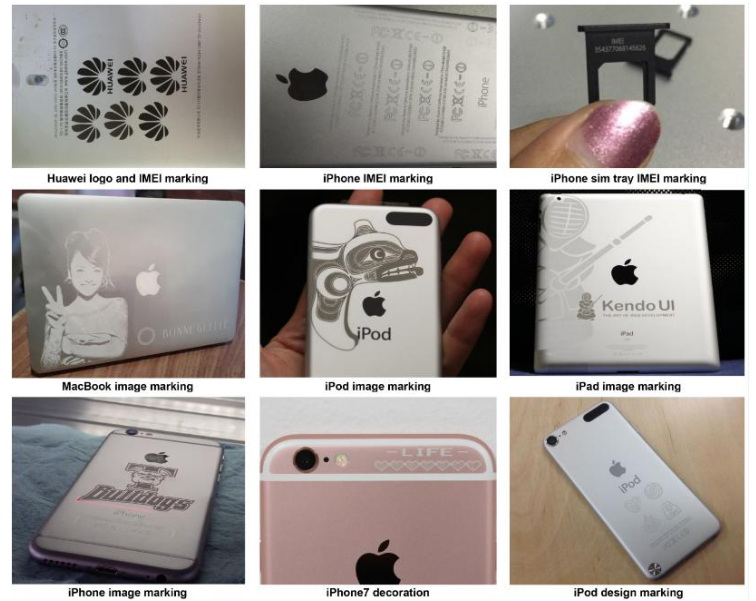
Rotary device for round materials engraving:200\$



Pen marking conveyor belt:1300\$



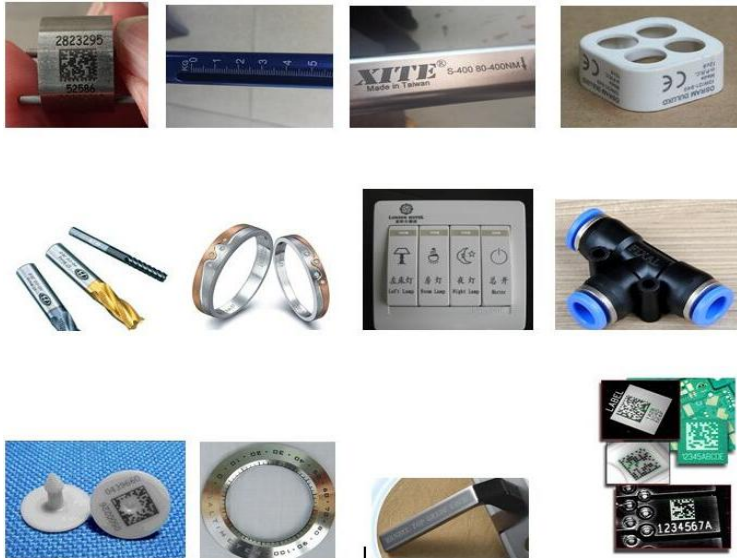
Samples





JINAN STYLE MACHINERY CO.,LTD

CNC ROUTER CNC LASER PLASMA CUTTER



Warranty and After sale service



JINAN STYLE MACHINERY CO.,LTD

CNC ROUTER CNC LASER PLASMA CUTTER



Warranty : 3 years warranty for fiber laser marking machine

After sale service:

1. We offer life-long technical support by call, email.
2. Our technician can give you remote guide online if you have any question.
3. We can record videos of operating the machine.
4. Free training course in our factory.
5. Engineer available to service machinery overseas.
6. Machine will be adjusted before it is delivered , operation disk/CD was included.

Trade term

1. 30% T/T as deposit,the balance before shipping
2. 3-5 days delivery time after receive your payment.
3. MOQ: 1set

Contact information

JINAN STYLE MACHINERY CO.,LTD

Office ADD: Building A1606, Rongsheng Times International, No. 9 Beiyuan Street, Jinan city, Shandong, China

Mobile/Whatsapp/Viber: 86-18766148818

Skype: stylecnc

Website: www.stylecnc.com

Email: info@stylecnc.com

Thanks for your reading and support!