

CoBrite_{DX4} - Laser

Features

- ✓ Ultra compact ; 1,2 or 4 lasers
- ✓ Polarization Maintaining Fiber
- ✓ Several Laser variants available
 - ✓ Fully tunable; narrow line width
 - ✓ 50GHz grid tunable; narrow line width
 - ✓ 50GHz grid tunable; standard line width
- ✓ Line width down to < 25kHz
- ✓ Remote control
 - ✓ USB & Ethernet connectivity
 - ✓ SCPI Style commands
- ✓ Easy-to-use pictographic GUI
- ✓ 19" Rack mount adapter available

Applications

- ✓ DWDM transport testing
- ✓ ready for data rates 100G+
- ✓ coherent Transmission
 - ✓ Local Oscillator
 - ✓ Transmitter Laser
- ✓ versatile Light source

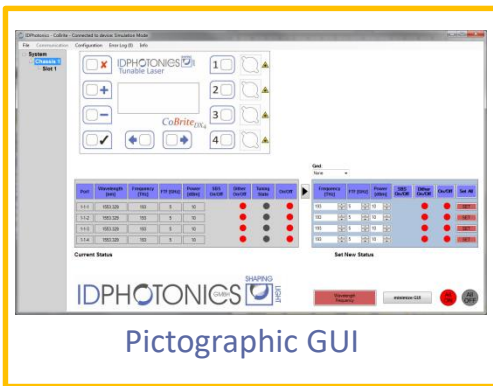


CoBrite_{DX4} is a versatile tunable Laser light instrument that allows standalone operation by a local display which eliminates the need for complex software installations. It makes this solution ultra portable.

The chassis can be equipped with **1,2 or 4** tunable lasers to meet your specific needs. SCPI command control empowers users to setup and perform complex automated tasks within minutes being 100% compatible to our *CoBrite_{MX}* chassis series.

Remote operation via USB or Ethernet is easily accomplished by a pictographic GUI that allows control over all relevant parameters.

Optical Parameter	Continuous tuning Laser (H01)	ITU Grid tuning Laser (C01)	Standard ITU tunable Laser (W01)	Unit
Frequency range; C – Band L – Band C&L – Band	191.3 – 196.25 186.35 – 190.95 186.25 - 196.25	191.7 – 196.1 186.5 – 190.9 –	191.7 – 196.1 186.5 – 191.1 –	THz
Channel Spacing	Continuous	50	50	GHz
Frequency fine tune resolution	1	1	–	MHz
Frequency fine tune range	+/- 12GHz	+/- 15GHz	–	GHz
Optical Power range C Band L Band C&L Band	6 – 15.5 7 – 14 3 – 10	15.5 14 –	8 – 14 5 – 11 –	dBm
Spectral Line width; 3dB instantaneous, 3.5us (Lorentzian contribution)	< 100 25kHz typical	Typical : 300 Max: 500	Typical : 800 Max: 5000	kHz
Frequency accuracy over Lifetime Over 24 hours		+/- 1.5 +/- 0.3GHz	+/- 1.8	GHz
SMSR; Side mode suppression ratio		>40 (50typ.)	>40 (45typ.)	dB
RIN (10MHz to 3GHz)		< -145 (up to 40GHz)	<-145	dB/Hz
Output Connector		FC/APC, FC/PC or SC/PC	FC/PC or SC/PC	
Output accuracy over Lifetime Over 1 hour Over 24 hours		-/+1 (1.3 for C&L Band) +/- 0.01 (typ.) +/- 0.03 (typ.)		dB
Output power setting resolution		0.01		dB
Optical Fiber		Polarization- maintaining PANDA type Fiber, PER > 20dB, 25typ.		



Device Parameter

Operating Temperature 0 to 40°C non-condensing

Storage Temperature -20°C to 60°C non-condensing

Size of device 85 x 171 x 350mm
(H x W x D) 3.3" x 6.7" x 13.8"

Power Supply 100-240 VAC, 0.5A, 50/60Hz

Ordering Information

CBDX4	-X	-X	-XXX	-XX
Article	No of Lasers	Band	Variant	Connector
CoBriteDX4	1 2 4*	C = C - Band L = L - Band CL = C&L Band	H01 C01 W01**	FA = FC/APC FP = FC/PC SP = SC/PC
CBDX4-19-x	19" Adaptor plate for rack mount, 3 HE 1: 1 Laserchassis; 2: 2 Laser chassis			

* no C&L Band

** PC type only



Invisible Laser Radiation
Class 1M Laser Product
EN 60825-1: IEC 60825-1

Contact information

ID Photonics GmbH
Anton-Bruckner-Str. 6
85579 Neubiberg
GERMANY
Tel.: + 49 (0) 89 – 201 899 16

info@id-photonics.com
www.id-photonics.com