

# Intraoral Camera | All-New, All-Aluminum Claris i5HD

## Claris® i5HD Intraoral Camera



## 25 Years of Intraoral Camera Evolution, Embodied Now

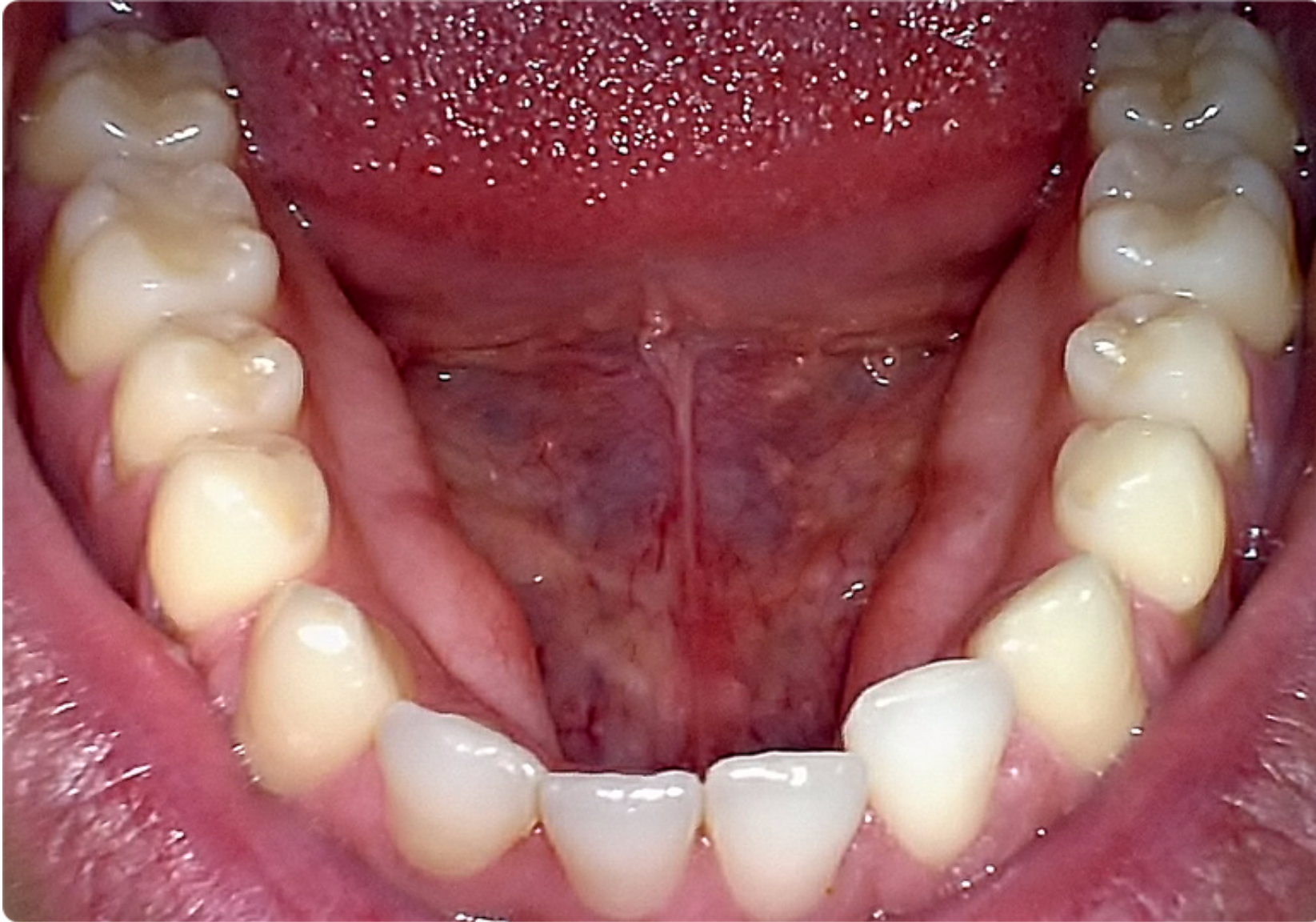
Since 1993, SOTA has helped build optic assemblies for the most well-known and trusted intraoral cameras in dental. With the production of our own proprietary cameras such as the Claris i310, one of the first USB intraoral cameras on the market, and the award-winning Claris i4D, we have developed the technology — from optics to ergonomics — to provide dental practitioners with the most advanced intraoral camera to date. Introducing the all-new Claris i5HD.

## Powerful from the inside out.

### Native HD Imaging Sensor

Unlike other "HD" cameras that merely resize images to high-definition resolution, our Claris i5HD Intraoral Camera is equipped with a native high-definition imaging sensor, reducing pixelation and unwanted artifacts that may obfuscate proper diagnosis. Be assured that your images will look crisp, clear, and vibrant on even the largest display formats.

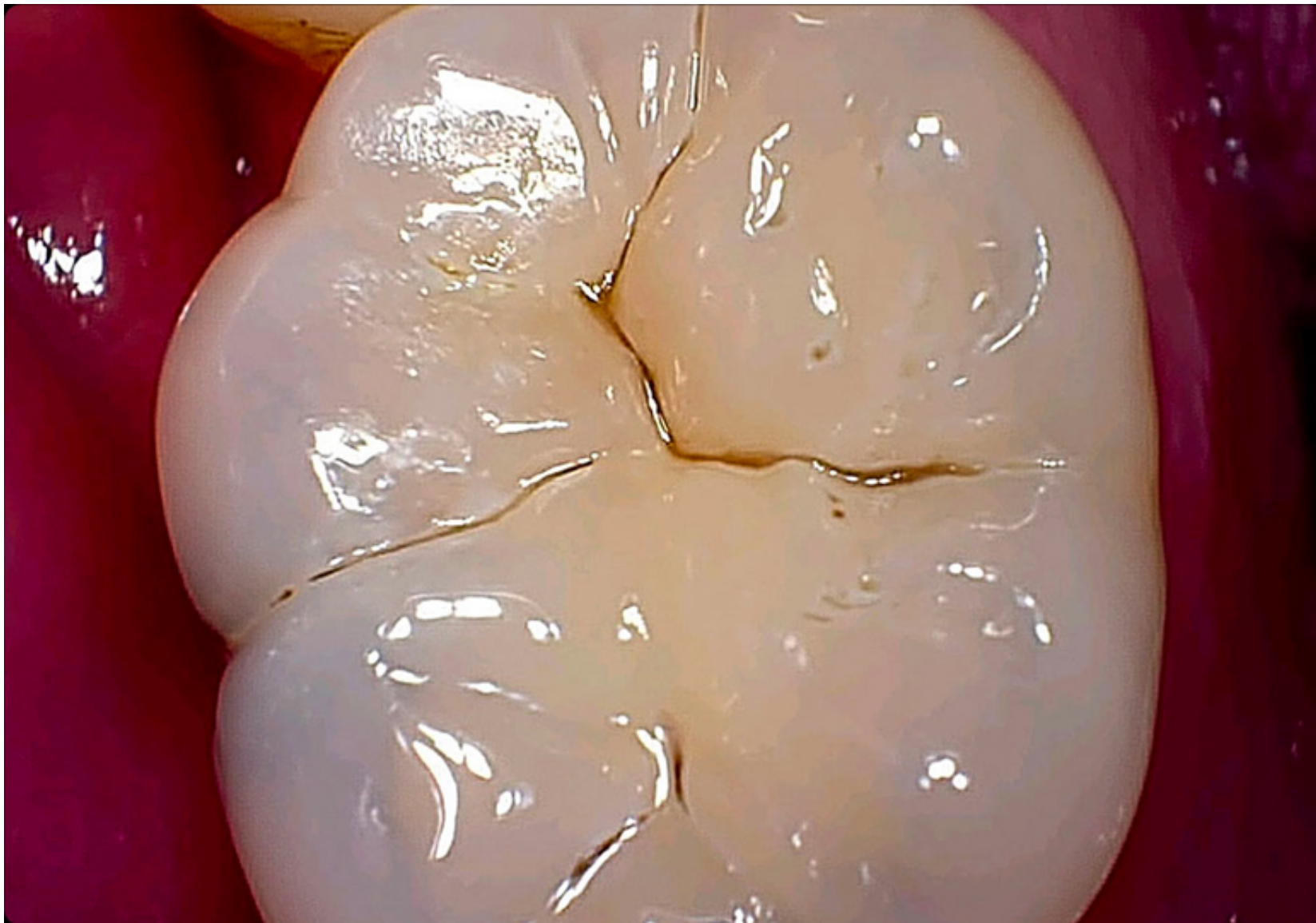
[Previous](#)

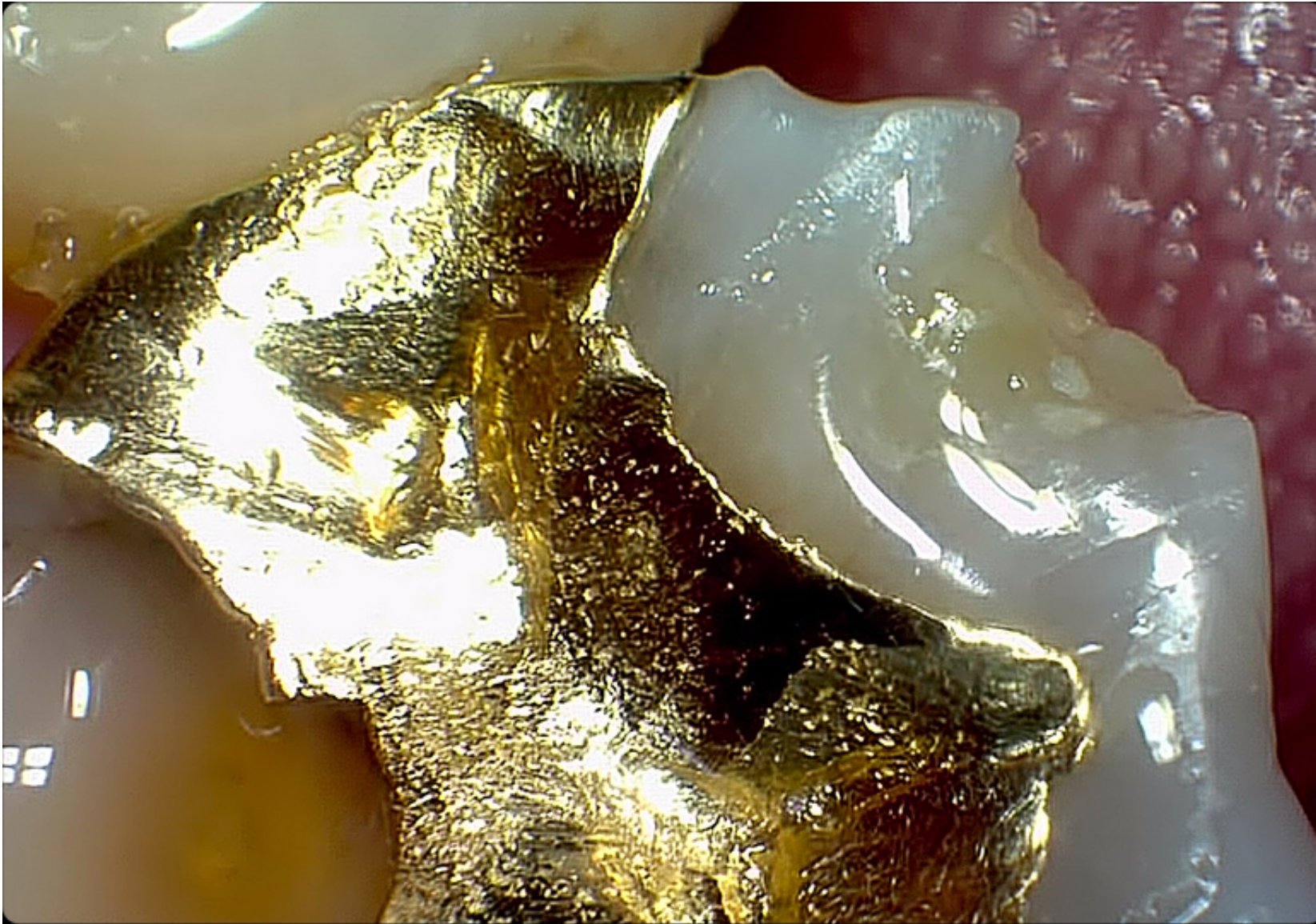


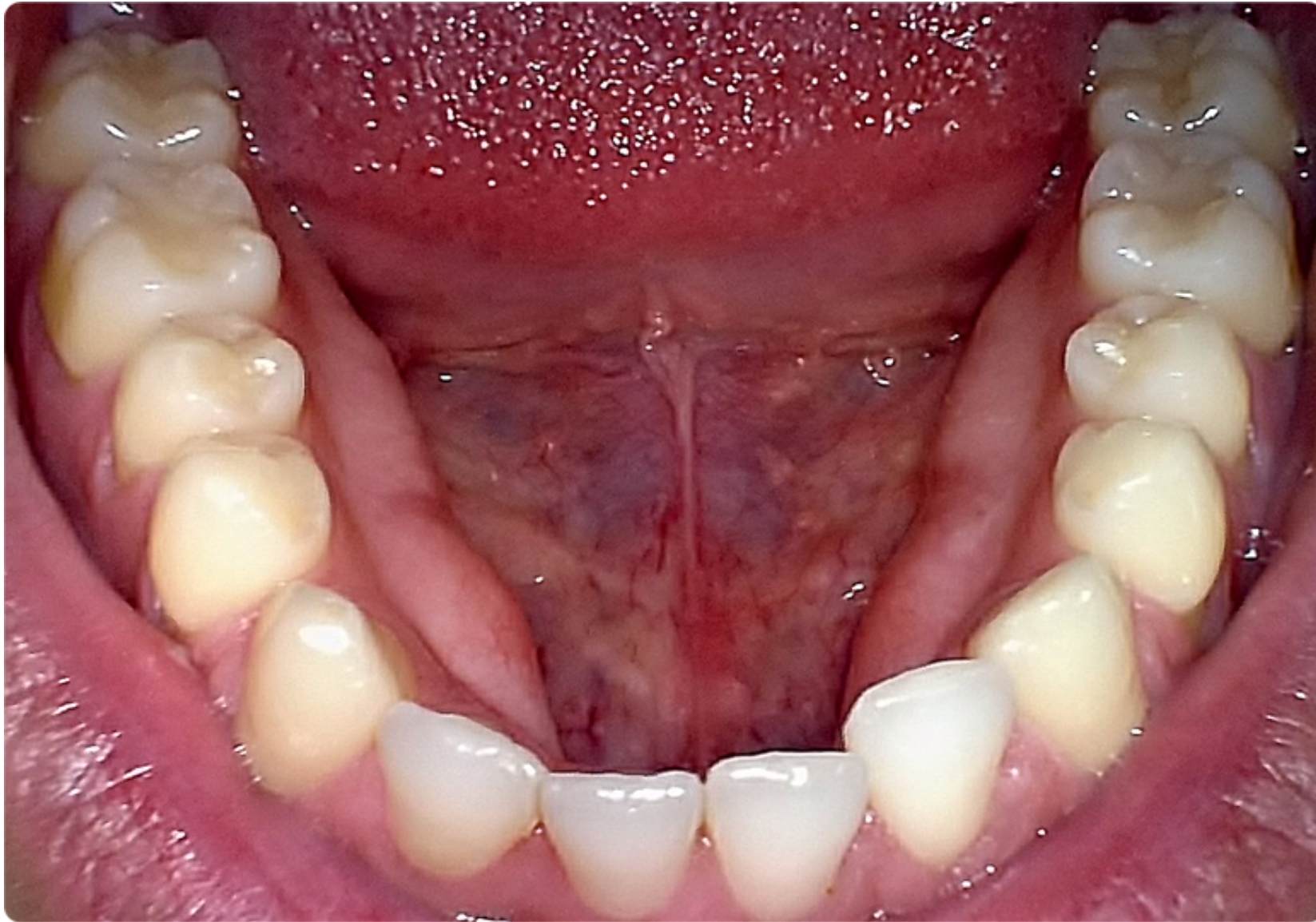










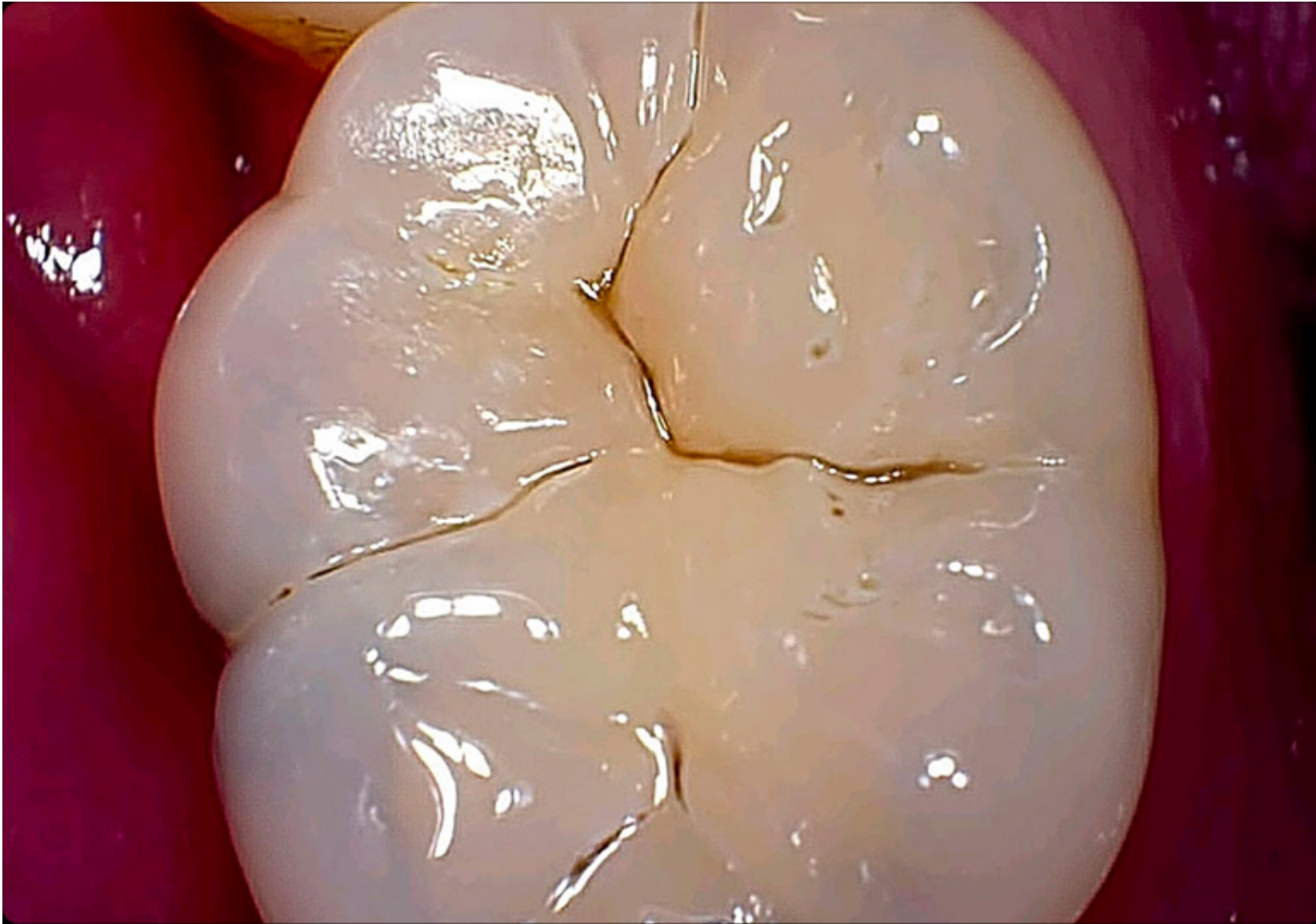


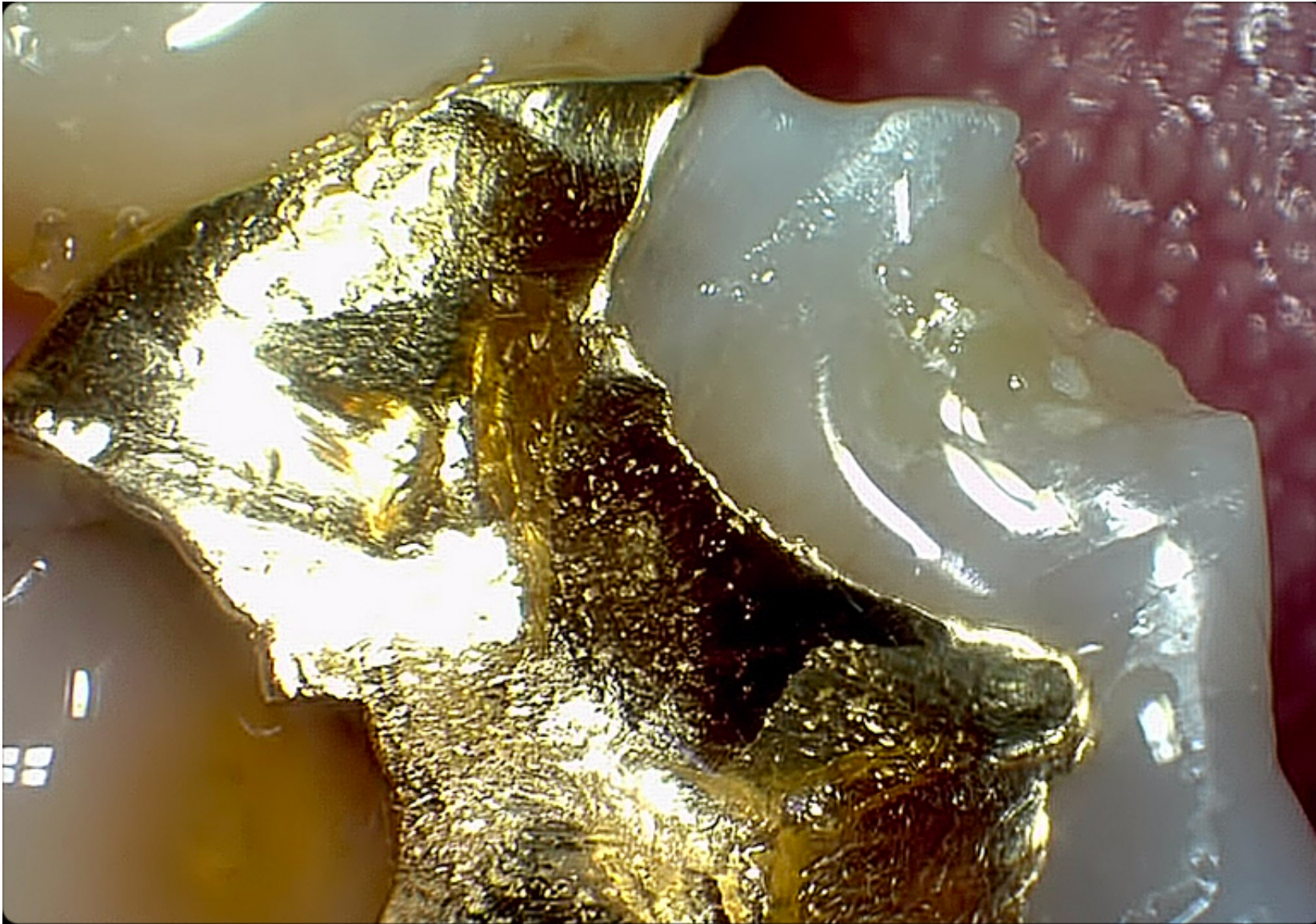


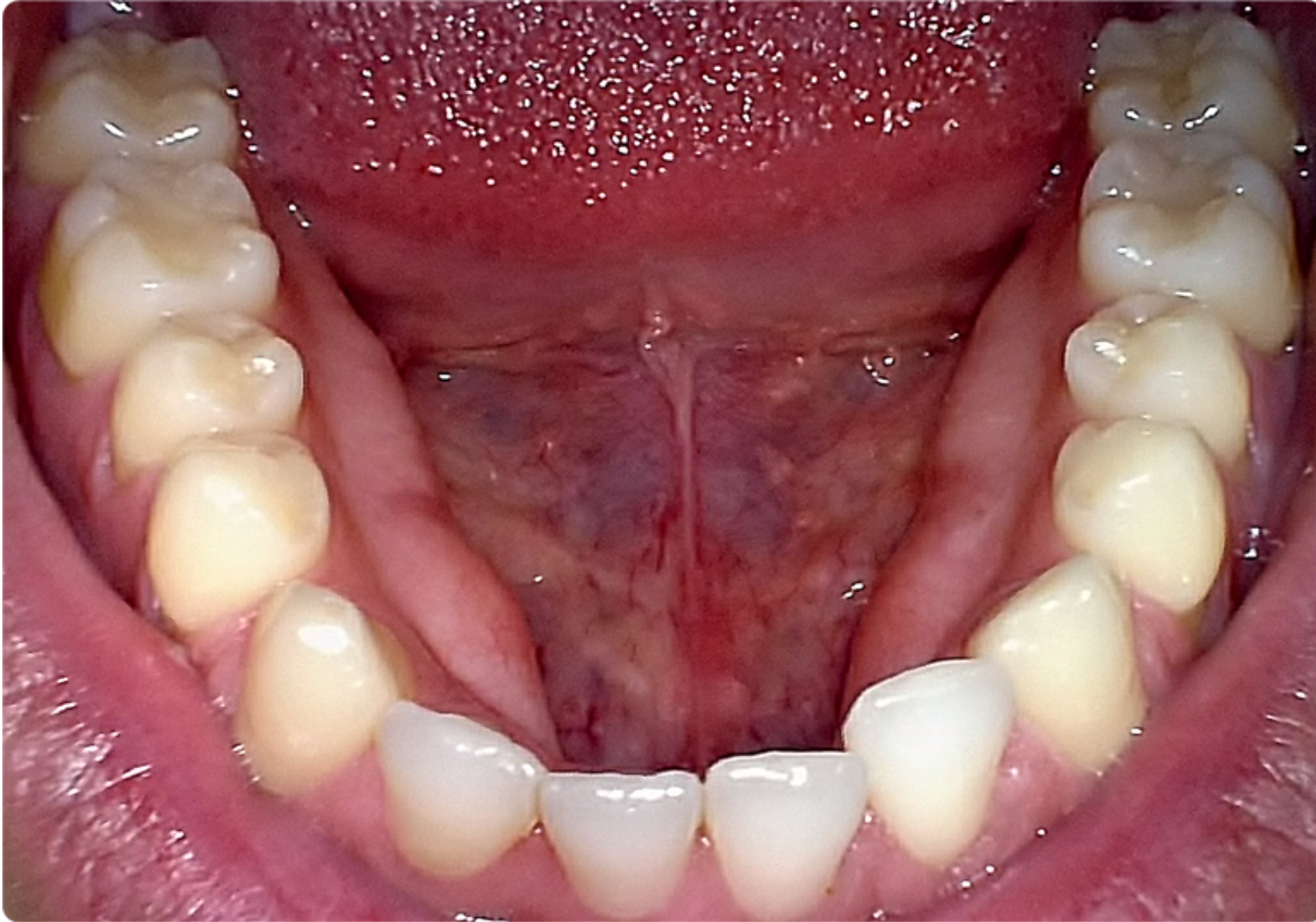












Next

- Incisor Detail
- Full Smile
- Single Molar
- Upper Molar

- Filling Detail
- Lower Arch

“

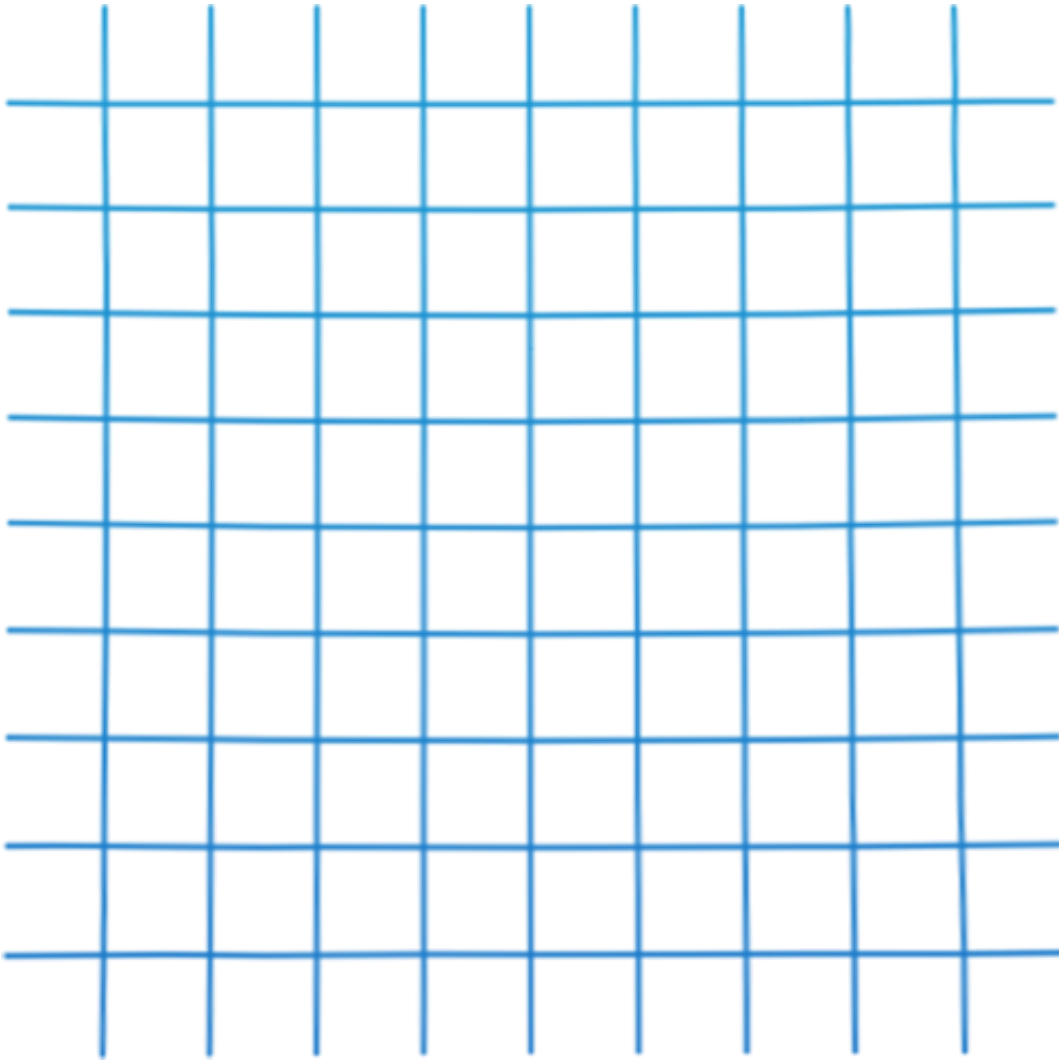
It's by far the best camera I've ever owned. The detail you can show your patients is amazingly clear.

Dr. Scott Methven, Wasilla, AK

## **Intraoral Images, Straight and True**

Other Brands

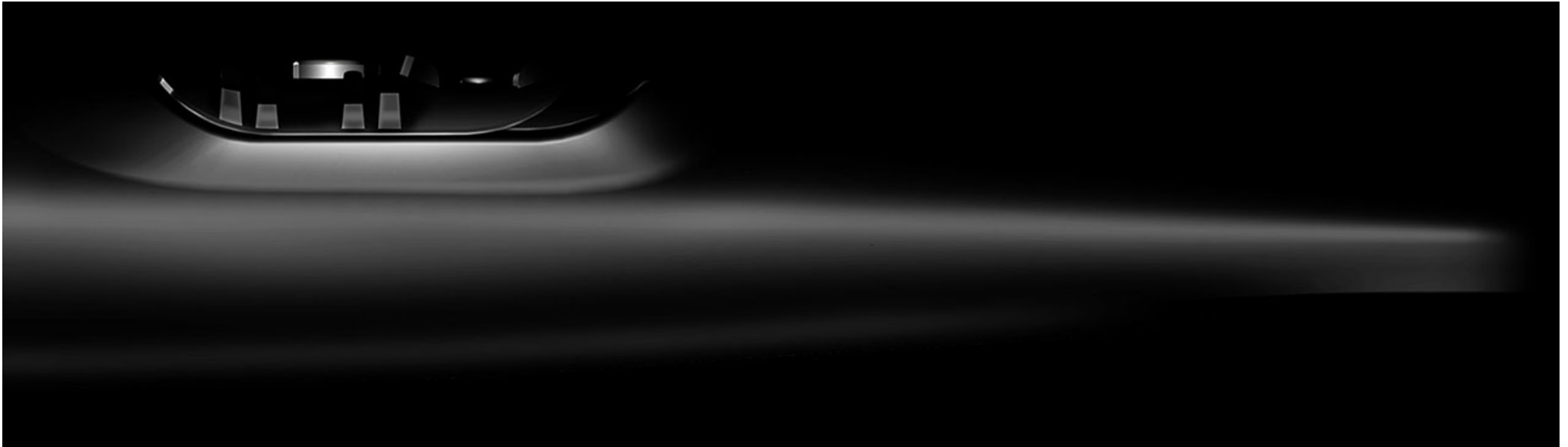




Claris i5HD

Lens quality and assembly is a crucial part of capturing images true-to-reality. Originally founded as an optics assembly manufacturer, SOTA can guarantee that our lens assembly is built to produce some of the least-distorted images in the industry. With a less than 5% distortion-rate, you can be confident that your images will communicate exactly what's going on.

## **Pedal to the metal.**



## Space-grade, Anodized-Aluminum Body

We matched the superior optics of this camera with the most high-quality materials. With a space-grade, anodized, machined aluminum body—the same materials used in the most premium smartphones—the Claris i5HD is not only built for extreme durability and strength but for a lightweight feel in your hand as well. And, simply, because it looks amazing.

# AI

“

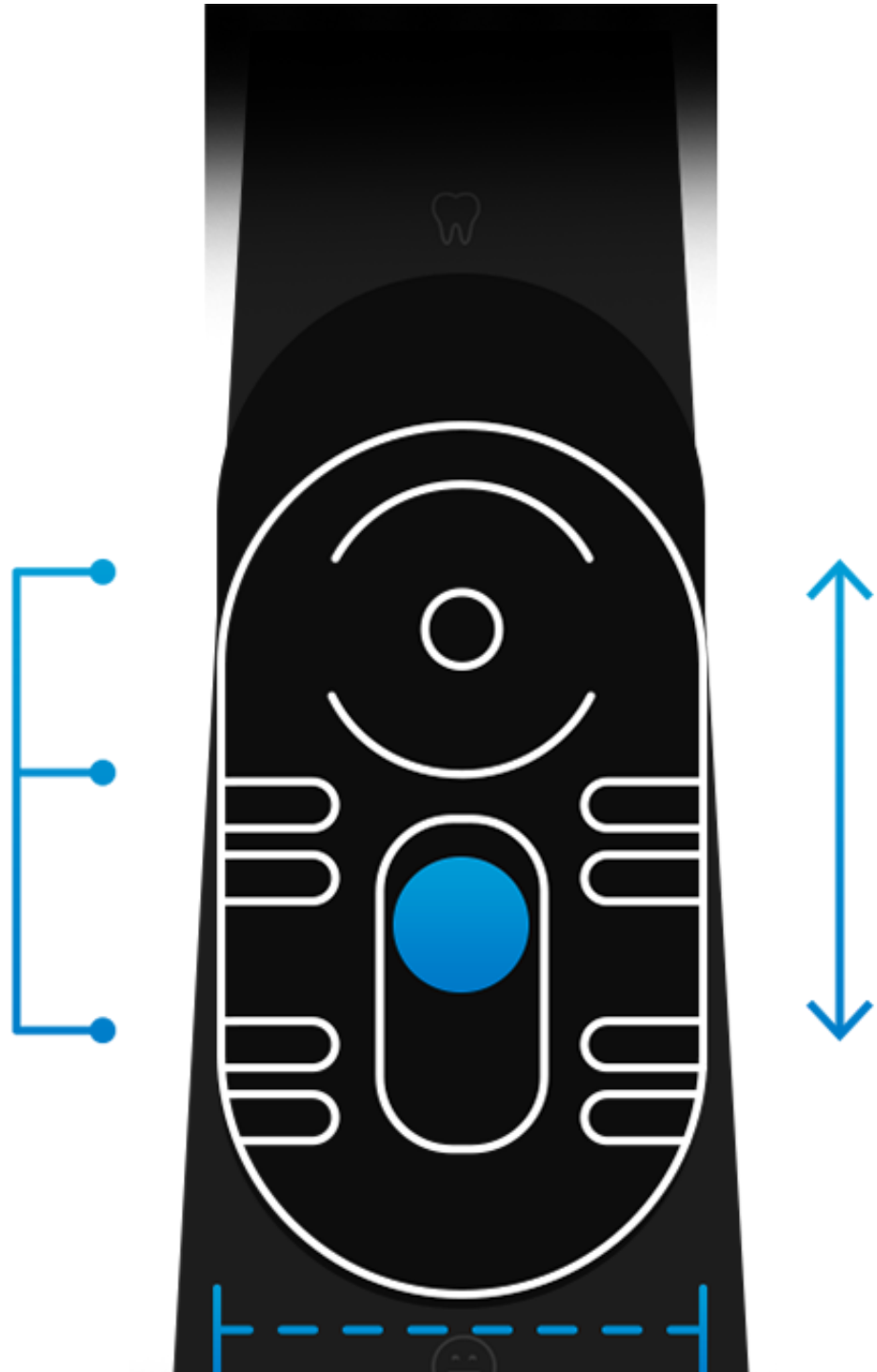
The extra-large slide-focus makes adjusting focus super easy and quick especially when handling the camera on-the-fly.

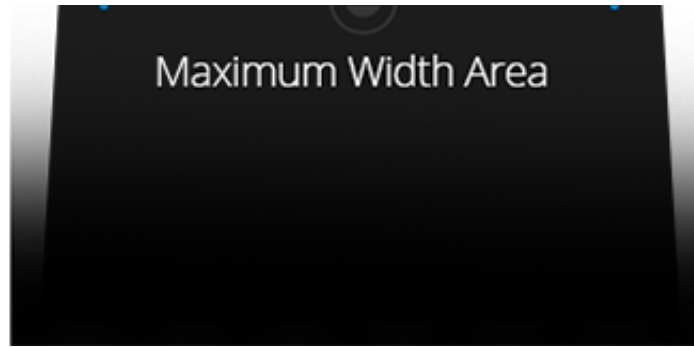
Dr. Marvin Pantangco, San Diego, CA

## **Maximum control and comfort.**

### **Ambidextrous Slide-Focus and Capture Button**

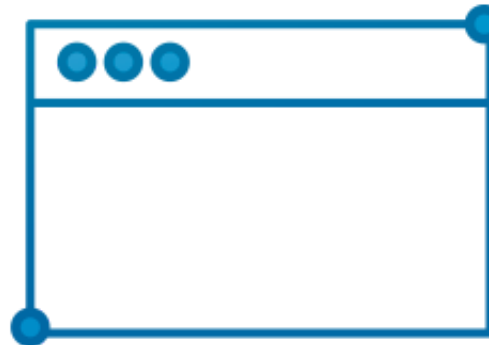
Our slide-focus covers the maximum width and area on the camera body, giving you—single-handedly—the ability to easily adjust focus and capture images without having to re-adjust your hand placement or search for a tiny component. However you hold the camera, by the tip of your thumb or index finger, the large focus slider is designed not to impede your flow, letting you make decisions on the fly without even looking.





## Turnkey Integration

The Claris i5HD Intraoral Camera is one of the only turnkey cameras on the market, designed to work with almost any dental imaging software and major practice management programs including Apteryx, Dentrix, Dexis, Eaglesoft, EasyDental, to name a few. Simply plug the intraoral camera in and immediately begin taking crystal clear images seamlessly with your current systems.



## Specs



MSRP - \$3,195.00

CMOS Sensor – 1/3” Large Pixel With Native HD Resolution

MJPEG Output Resolution – 1280 X 720P and alternate 640 X 480 for backwards compatibility

Signal Output – USB 2.0 forward compatible with USB 3.X

Angle of View – 61 degrees

Focus Range – 2mm-200+mm (infinity)

Maximum Magnification – 640x480:20X -1280x720:50X

Lighting – 6 True White LEDs

Distortion – <5%

Driver Type, – UVC (USB Video Class)

Operating Systems – Windows 7/8/10 (32/64 bit) and macOS Sierra+

## How to Buy

We partner with all major dental dealers, including Henry Schein, Patterson, Benco, Burkhart, and Darby.

### In-office Demo

Schedule with us, and our experts will be in your office in no time! We have decades of experience working with large practices and small. Try our products hands-on and make the best decision for your office.

**Demo-by-mail**

Try our products absolutely risk-free for 7 days with no strings attached. Simply choose from our products, and we'll pay for shipping both ways. Our experts will guide you remotely from our headquarters in California.