

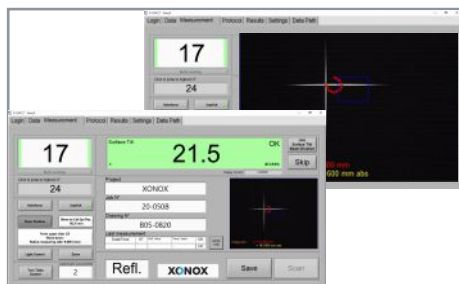
CM 140

CENTERING ERROR MEASUREMENT SYSTEM

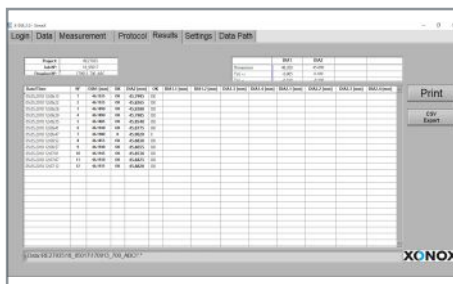


- _ precise and easy to operate non-contact measurement system for determining centering errors on lens elements in production, quality inspection or metrology lab environments
- _ measurements facilitated by precision autocollimator and secondary substage collimator
- _ software recall of previous setups facilitates efficient use for recurring jobs
- _ lens centering can be measured in transmission or reflection
- _ unique, height adjustable chuck, automatically centers lenses of various diameters and correctly locates friction wheel for efficient loading and operation
- _ very fast and convenient setup of lensholder without any need for changing or adjusting a V-stop
- _ commonly used functions are conveniently located for easy access and direct control over Z-axis height, vacuum, speed, crosshair display
- _ large measuring range
- _ equipped with extensive software and controller package, "X-cm" for various modes and automatic documentation of measurement results of complete series

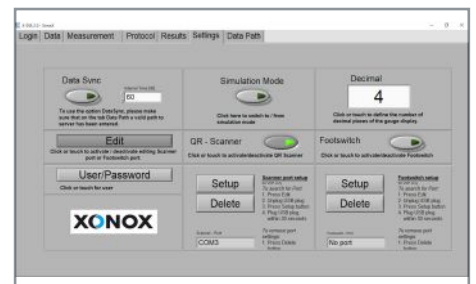
SOFTWARE + CONTROLLER PACKAGE X-cm



- easy and touch screen optimized dialogue user interface
- automatic counting / touch zoom for measuring window
- green (in spec) or red (out of spec) display of measurements
- data input manually or via QR code reader



- automatic documentation of all measurements
- listing of optical axis tilt and edge runout
- automatic marking IN/OUT of spec for all dimensions
- extensive data export functions + X-metroLINK compatible



- intelligent and easy-to-use setup for administrative functions and user handling
- quick setup for auxiliary equipment such as QR reader, footswitch etc.
- easy network integration and path settings for documentation

WORKING RANGE	750 mm travel of Z-axis
DIAMETER RANGE	ø8 - ø140 mm
MEASURING SYSTEM	precision autocollimator and secondary substage collimator
DIMENSIONS (WxDxH) / WEIGHT	590 x 570 x 1300 mm (additional space required for X-dia PC) / approx. 35kg
CONNECTIONS	110-240 V / 50-60 Hz, compressed air: 6 bar
COLOR	Light grey RAL 7035

XONOX Technology GmbH // Kirchstrasse 9 // 35625 Hüttenberg // Germany
 Phone +49 6441 96364-0 // Fax +49 6441 96364-10 // info@xonox-tec.com // www.xonox-tec.com

XONOX Technology Inc. // 1387 Fairport Road - Suite 810 // Fairport, NY 14450 // USA
 Phone (585) 678 9560 // Fax (585) 364 0285 // info@xonox-tec.com // www.xonox-tec.com

XONOX
 METROLOGY FOR OPTICS REDEFINED