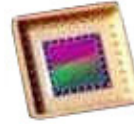


[Home](#)

Talktronics, Inc. - CCD / FPA Socket Adapters

- [Imaging Products](#) ▶
- [Applications](#) ▶
- [Design Services](#) ▶
- [Speech Products](#) ▶
- [Automotive-Industrial](#) ▶
- [More Information](#) ▶



Socket Adapters are used in the CCH Dewar to connect a given CCD or FPA to the Camera Head electronics. A Camera Head may therefore support a number of sensors, with the appropriate configuration of the timing generator and support software. All socket adapters are designed to permit cooling of the sensor by a "cold finger" against the back of the sensor package. Currently, the following devices are supported:

Sensor	Manufacturer	Format	Type	Wavelength	Description
TC223	Texas Instruments	1024 x 1024	Si CCD	Visible	
Cassini	JPL	1024 x 1024	Si CCD	Visible	
CCD422	Loral	1024 x 1024	Si CCD	Visible	
TK512	Site (Tektronix)	512 x 512	Si CCD	Visible	front/back illuminated
TK1024A	Site	1024 x 1024	Si CCD	Visible	
CCD-17	EEV	512 x 512	Si CCD	Visible	image/store
CCD-42-10	EEV	2K x 512	Si CCD	Visible	
THX7422A	Thomson	2 x 150	InGaAs FPA	SWIR	hybrid array
CRC585	Raytheon/SBRC	256 x 256	HgCdTe FPA	LWIR	snapshot
SBRC117	Raytheon/SBRC	256 x 256	HgCdTe FPA	LWIR	snapshot
AE173/194	Raytheon/Amber	256 x 256	InSb FPA	MWIR	snapshot, windowing
AE173/194	Raytheon/Amber	256 x 256	InSb FPA	MWIR	snapshot, windowing
AE195	Raytheon/Amber	512 x 512	InSb FPA	MWIR	snapshot, windowing
TCM2001	Rockwell	256x256	HgCdTe FPA	LWIR	snapshot
TCM2550	Rockwell	256x256	HgCdTe FPA	LWIR	snapshot, windowing

Additional devices are being added to the list, contact the factory for inclusion of other sensors or special requirements. The general-purpose nature of the Universal Camera System allows virtually any CCD or FPA to be supported.