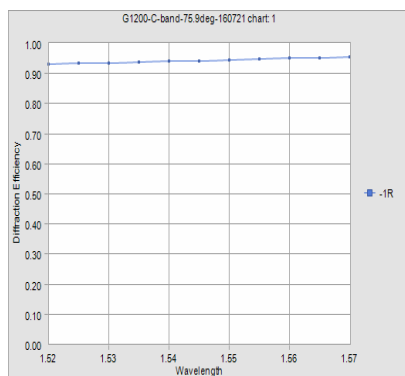
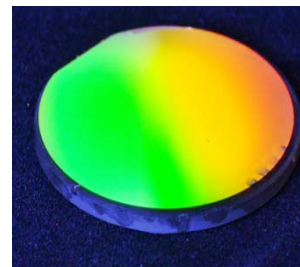


High Efficiency Reflection Grating, 1200 line/mm for 1520nm-1570nm



Features:

- Popular applications in telecom @ 1550nm, especially for WSS;
- Very high diffraction efficiency;
- Excellent feature fidelity and groove uniformity;
- Extreme environmental stability;
- Low light scatter;
- Very competitive pricing;
- Strict quality control;
- Substrate materials: UVFS / ULE.



Specifications:

Table 1. Substrate Dimension Option

Part number	Substrate length	Substrate width	Clear aperture
FRG-1200-1	30.0	25.5	0.5mm from all edges
FRG-1200-2	32.0	20.0	
Custom dimensions	Any rectangle fitting with 50mm diameter circle		

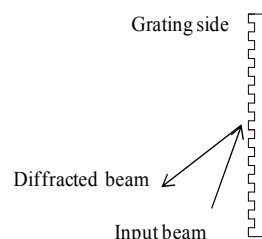
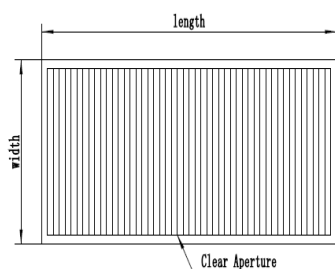
Table 2. Optical Specifications

Line density	1200.0 line/mm
Line density uniformity	0.1 line/mm
Angle of incidence	75.9°
Central wavelength	1550nm
Diffraction efficiency	>93%

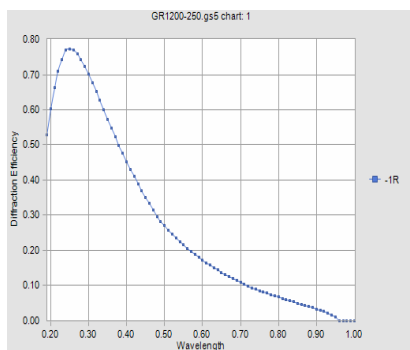
Table 3. Mechanical Specifications

Dimension tolerance	±0.2mm for all edges
Material	ULE
Scratch	60/40
Parallelism	<0.1°
Perpendicularity	<0.1°

Typical Layout:

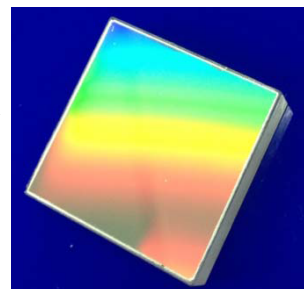


High Efficiency Reflection Grating, 1200 line/mm for 190nm-1000nm



Features:

- Popular applications for spectroscopy;
- Very high diffraction efficiency;
- Excellent feature fidelity and groove uniformity;
- Extreme environmental stability;
- Low light scatter;
- Very competitive pricing;
- Strict quality control;
- Substrate materials: UVFS / BK7/ULE.



Specifications:

Table 1. Substrate Dimension Option

Part number	Substrate length	Substrate width	Clear aperture
FRG-1200-3	25.0	25.0	0.5mm from all edges
Custom dimensions	Any rectangle fitting with 50mm diameter circle		

Table 2. Optical Specifications

Line density	1200.0 line/mm
Line density uniformity	0.1 line/mm
Angle of incidence	8.6°
Central wavelength	250nm
Diffraction efficiency	>70%

Table 3. Mechanical Specifications

Dimension tolerance	±0.2mm for all edges
Material	BK7
Scratch	60/40
Parallelism	<0.1°
Perpendicularity	<0.1°

Typical Layout:

