

Aluminum Plate Breadboards

Optics

Lenses

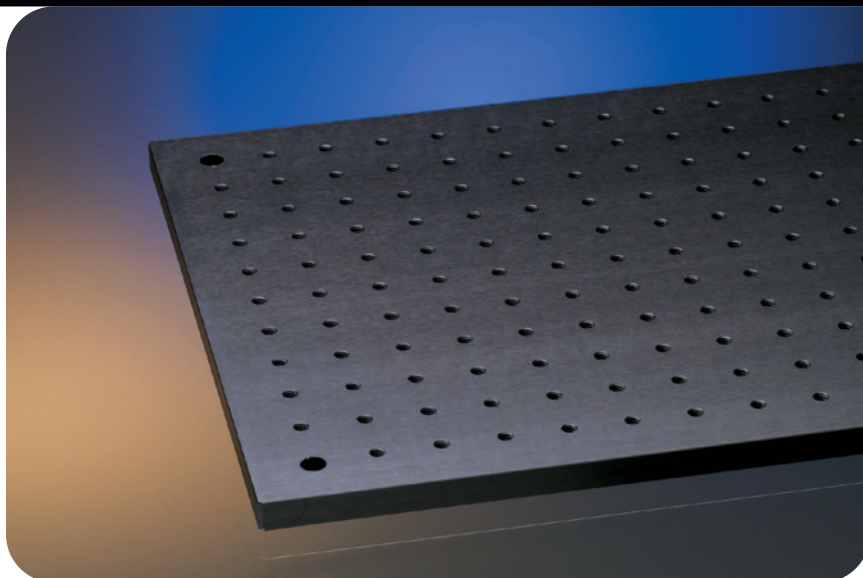
Mirrors & Beamsplitters

Prisms & Polarizers

Filters

Pinholes

- **Solid 12.7 mm thick aluminum plate**
- **Black - low reflective surface**
- **Metric and Inch hole patterns**



Opto-mechanics

Breadboards & Rails

Mounting Hardware

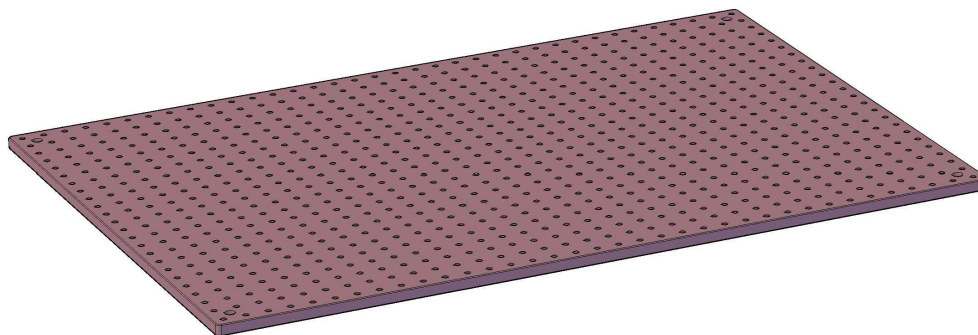
Mirror & Component Mounts

Manual Micro Positioners

Motorized Positioners

These solid aluminum threaded plates provide a useful low cost base for building optical systems or prototypes. The 12.7 mm ($\frac{1}{2}$ inch) thick plates have a low reflectance black finish and are offered in a range of sizes to suit most applications. They are available in both

metric (M6 holes on 25 mm centers) and inch series ($\frac{1}{4}$ -20 holes on 1 inch centers). Holes are tapped right through the plates providing greater flexibility. They may also be mounted above the surface of an optical table or breadboard with the aid of a set of pillars.



Specifications

Material: Aluminum alloy

Thickness: 12.7 mm ($\frac{1}{2}$ inch)

Finish: Matte black

Tapped holes -

Metric Series: M6 on 25 mm centers

Inch Series: $\frac{1}{4}$ -20 on 1 inch centers

Weight: 30 kg/m² (6 lb/ft²)

Aluminum Plate Breadboards (Metric)

Catalog Number Metric	Width x Length (m)
54-1888	0.15 x 0.3
54-1896	0.3 x 0.3
54-1904	0.3 x 0.6
54-1912	0.3 x 0.9
54-1920	0.6 x 0.6
54-1938	0.6 x 0.9

Aluminum Plate Breadboards (Inch)

Catalog Number Inch	Width x Length (ft)
62-1888	0.5 x 1
62-1896	1 x 1
62-1904	1 x 2
62-1912	1 x 3
62-1920	2 x 2
62-1938	2 x 3