

Laserglow Product Datasheet

Altair Focus-Adjustable Green Laser Pointer

Laserglow Part Number: GAL005XXX



Similar Products:

For information about the other lasers in this product family visit:

<http://www.laserglow.com/GAL>

Ordering:

Order Online Now or Request Quote:

<http://www.laserglow.com/GAL005XXX>



Series Specifications:

Nominal Wavelength	532 nm
Output Type	CW
Laser Source Type	DPSS

May not be exactly as shown. See dimensional drawing for details.

Overview:

An Altair laser is the perfect tool for professionals and laser hobbyists who need full control over the size of the projected beam. The projected spot size can be easily adjusted using the focusing ring at the front of the laser pointer.

The combination of this added functionality with improved green laser pointer technology makes the Altair the perfect choice for dozens of applications from being used at personnel check-points to demonstrating the properties of light in educational applications.

The Altair is also ideal for presentations on a variety of viewing screens.

Key Features:

- *Starting at: \$69*
- *Output Power: 4.0 mW - 5.0 mW*
- *Wavelength: 532 nm (green)*
- *Key Feature: Adjustable Focus*
- *Casing: Solid Brass, black with Chrome with pocket clip*
- *Safety Info: Complies with Class IIIa regulations.*
- *Package Includes: Portable laser, batteries, carrying case, instructions/warranty.*
- *Duty Cycle: 90 sec. on/20 sec. off*

Quality, safety, unique features and range make Laserglow the leader in green pointers. [Learn more here.](#)

Specifications:

This spec sheet has been generated specifically for part number GAL005XXX, per your request, and data for the entire series is also displayed for your reference. The specs which are specific to GAL005XXX have been highlighted below in **red + bold**.

Laser Form Factor	GAL
Output Power (mW)	<5
FDA Safety Class	IIIa
Central Wavelength (nm)	531.65
Divergence (mrad, full angle)	<1.2
Beam Diameter (mm, 1/e ²)	1.5
Transverse Mode	TEM00
Longitudinal Modes	Multiple
Operating Temperature Range (°C)	15 to 35
Storage Temperature Range (°C)	-10 to 50
Total Power Consumption (W)	2
Max. Power Input Duty Cycle	90 sec. on/20 sec. off
Cooling Method	Passive Air
Standard Warranty (months)	6
MTTF (operational hours)	5000
Weight of Laser Head (kg)	0.06
Laser Head Dimensions (mm)	155 (l) x 13.5 (d)
Power Supply	2 x AAA Batteries

CW: All specifications are based on performance at full output power and after the specified warmup period. Output characteristics may change if the laser is run at a different power level.

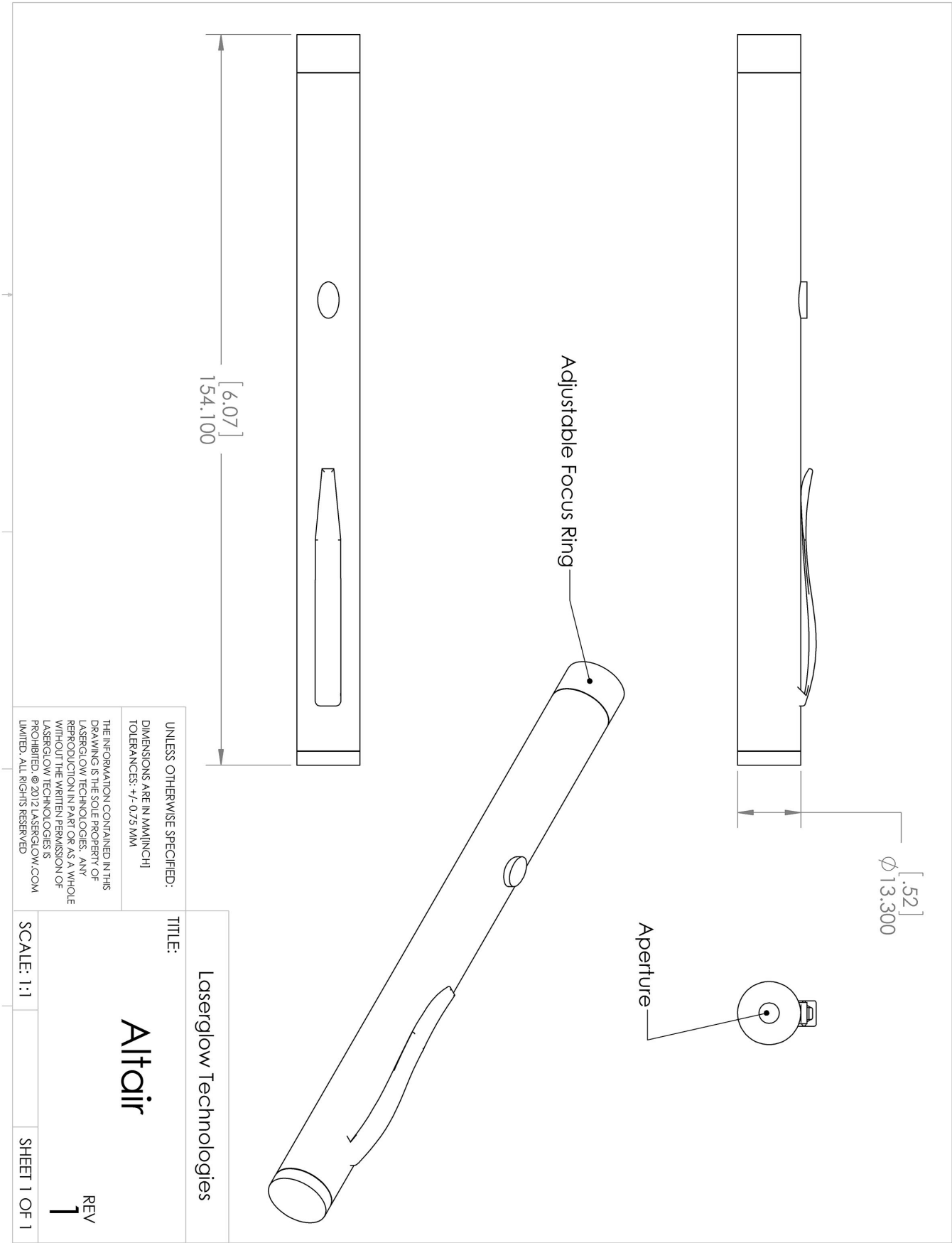
Q-Switched: Specifications are based on the laser pulsing at the specified design frequency. Output characteristics may change if the laser is run at a different frequency.

Regulatory Classification:

The model you have selected (GAL005XXX) requires the following safety label(s):

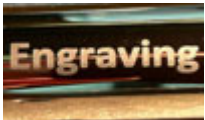


Dimensional Drawing - Laser Form Factor: GAL:



Accessories:

The most popular accessories for model GAL005XXX are shown below. For additional details regarding these or other accessories please see our website or contact us directly.

Part Number	Description	
 ASE001XXX	Engraving On Laser Pointer Max. 2 lines 45 characters each Full Details: www.laserglow.com/ASE	

FOR MORE INFORMATION PLEASE CONTACT:

LASERGLOW TECHNOLOGIES
873 St. Clair Ave West, Toronto, ON, Canada M6C1C4
Tel. (416) 729-7976 Fax (480) 247-4864
sales@laserglow.com www.laserglow.com

E&OE: Data included in this sheet may be subject to change without notice.

Please confirm critical specifications with our staff prior to ordering.