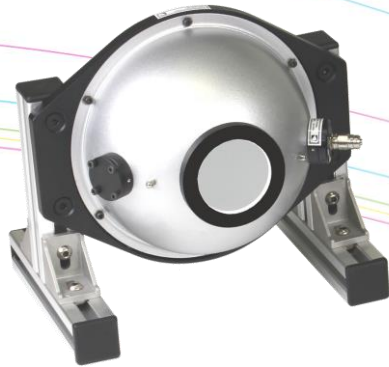


brochure



accessories

overview of sampling accessories





Contents

1	Tailored accessories for perfect results	3
2	Sampling accessories overview	4
3	Lens accessories	5
4	Optical fibres	6
5	Integrating spheres	7
5.1	75mm integrating sphere	8
5.2	150mm integrating sphere	9
5.3	250mm integrating sphere	10
6	Reflective probes	11
7	Cables & adapters.....	12
8	Calibration accessories	13
9	Dust caps	14



1 Tailored accessories for perfect results

Admesy offers a broad range of sampling and measurement accessories for our measurement devices. The range includes collimating and other lenses, cosine correctors, fibres, reflective probes and holders, integrating spheres and cuvette holders.



2 Sampling accessories overview

Accessories	Collimating lens	Regular lens	Cosine corrector	Integrating sphere	Reflective probe	Cuvette holder
Display: spot measurement	■	■				
LED/SSL: radiant power measurement				■		
LED/SSL: irradiance measurement			■	■		
LED/SSL: flicker measurement			■	■ 1		
Appearance: transmission measurement						■
Appearance: colour measurement	■	■			■	
Appearance: gloss measurement					■	

1 When used in combination with Cronus spectro- colorimeter.



3 Lens accessories

For remote sensing in combination with Admesy's colorimeters, spectrometers and light meters, Admesy has developed a number of optical lens systems which can be connected to Admesy's M8 optical fibre. This allows flexibility when integrating measurement devices into production lines or for R&D purposes.

Item code	Description
AC-CC-01	1 cm ² UV-NIR cosine corrector system
AC-COL-5	5 mm collimating lens system ¹
AC-COL-10	10 mm collimating lens system ¹
AC-COL-20	20 mm collimating lens system ¹
AC-IDMS-1-1	IDMS lens system ²
AC-VMS-1-05	VMS lens system ³
AC-L10-Tube	100mm measurement tube for 10mm lens system

1 +/- 0.3° acceptance angle.

2 International Display Measurement Standard +/- 1° FOV, +/- 1° acceptance angle.

3 Variable Message Sign +/- 1° FOV, +/- 0.5° acceptance angle.

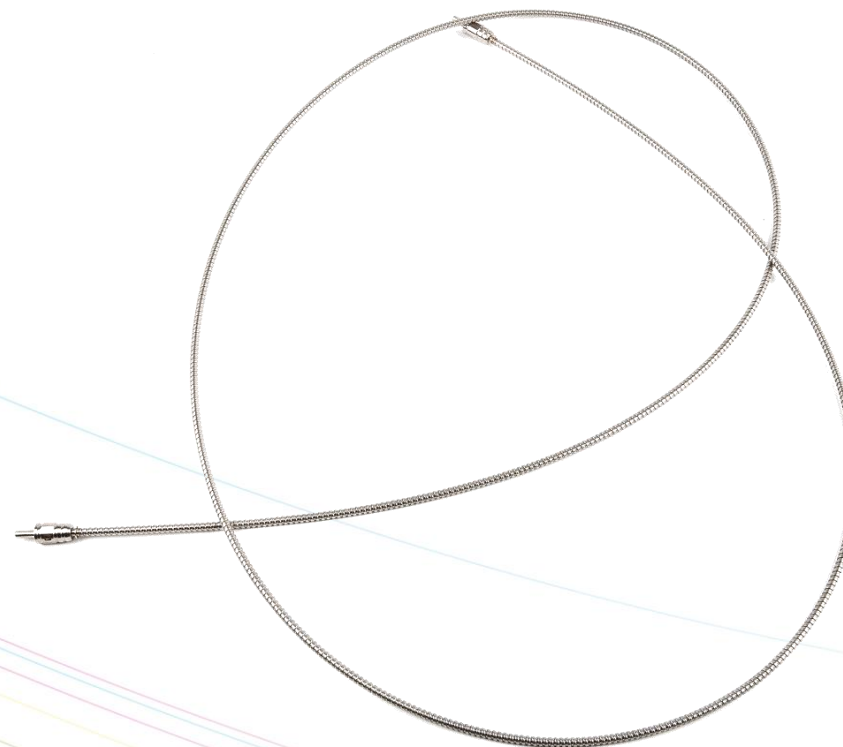




4 Optical fibres

Admesy has developed the M8 optical fibre which ensure a fixed position when connecting devices and accessories such as separate lenses, integrating spheres etc. The fixed position allows more stable measurement results and enhances repeatability. Fibres are available in different lengths.

Item code	Description
AC-FBR-250	250 mm optical fibre
AC-FBR-500	500 mm optical fibre
AC-FBR-1000	1000 mm optical fibre
AC-FBR-2000	2000 mm optical fibre
AC-FBR-3000	3000 mm optical fibre

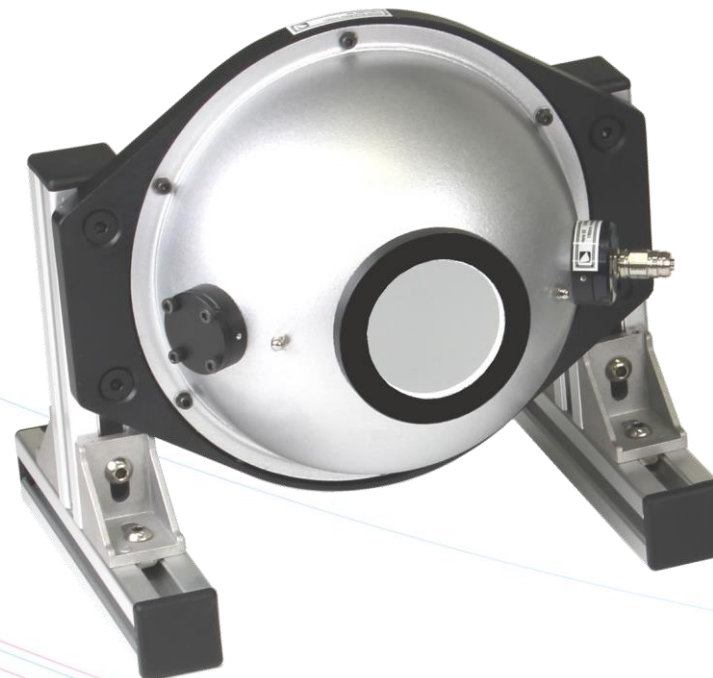




5 Integrating spheres

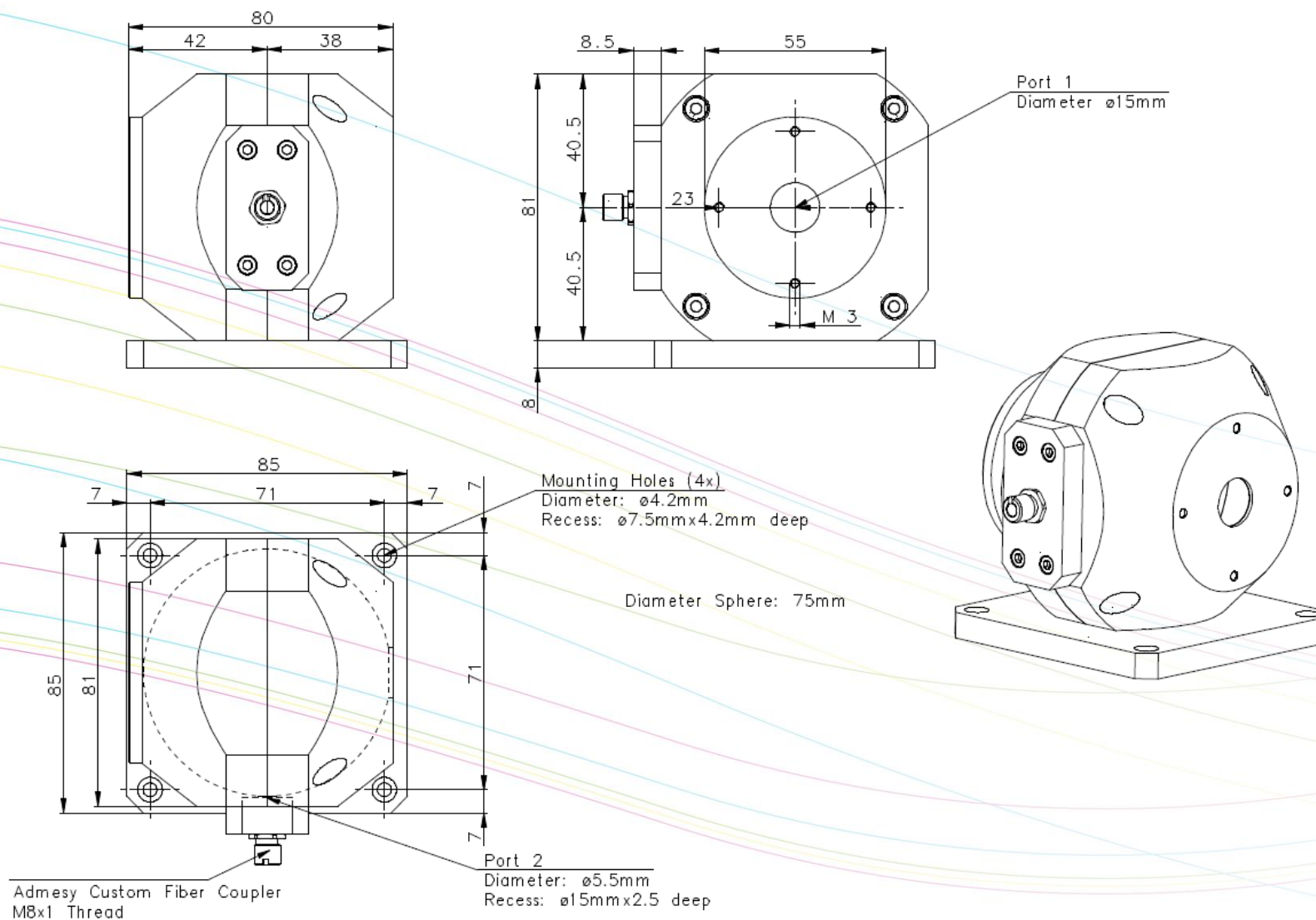
For radiant power measurements of light sources, Admesy offers various integrating spheres. Integrating spheres can be connected to our colorimeters, spectrometers, or light meters with Admesy's M8 optical fibres. For our spectrometer users, Admesy offers an absolute calibration of the spectrometer in combination with the Admesy Integrating Sphere.

Item code	Auxiliary lamp	Application	Type of DUT
AC-AIS-75-01 (Ø 75mm)	Not optional	Production	Standard single LEDs
AC-AIS-150-01 (Ø 150mm)	Optional	Production R&D / laboratory	Standard single LEDs High power LEDs
AC-AIS-250-01 (Ø 250mm)	Optional	R&D / laboratory CIE 127 compliant for 2π measurements	Standard single LEDs High power LEDs Small LED modules



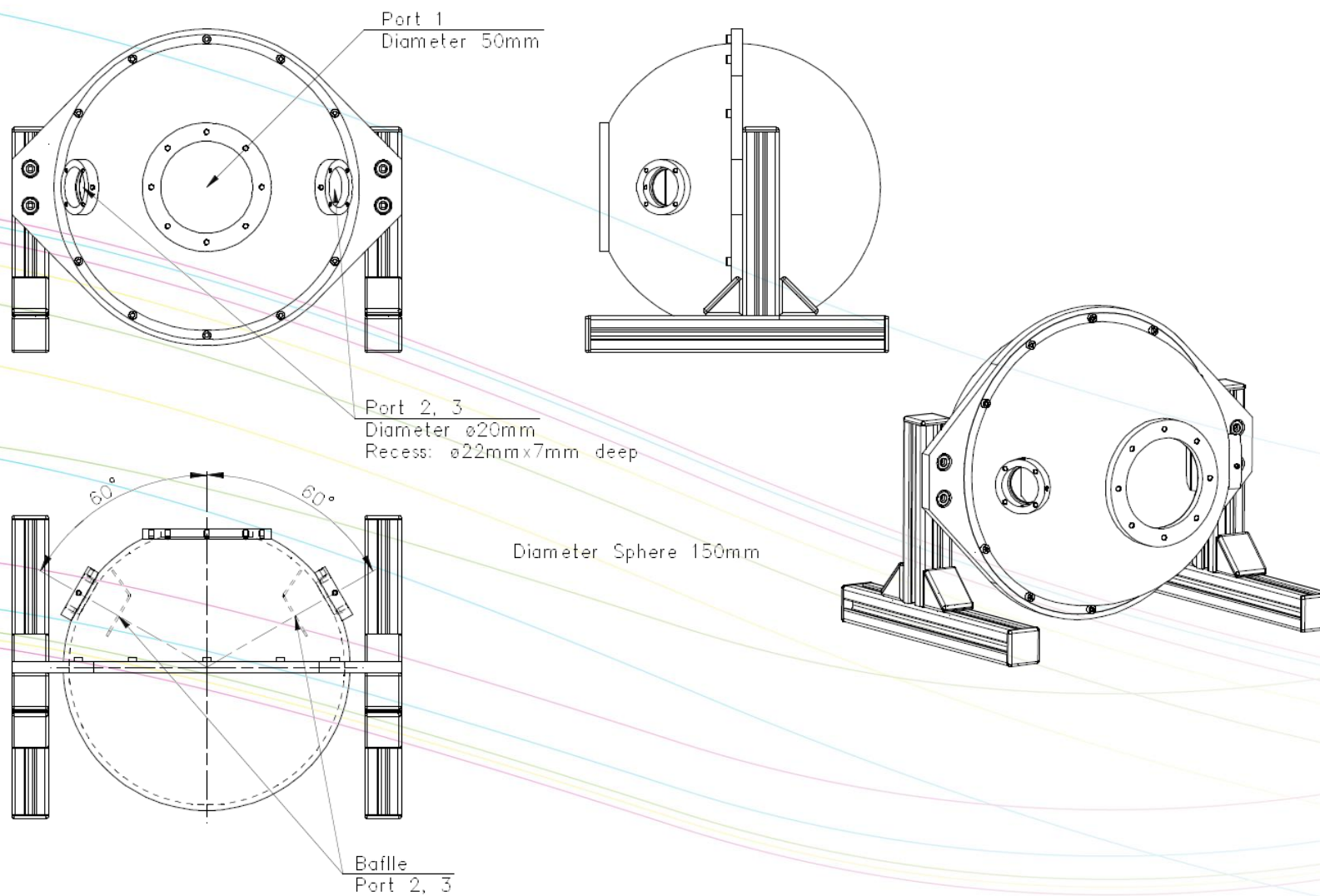


5.1 75mm integrating sphere



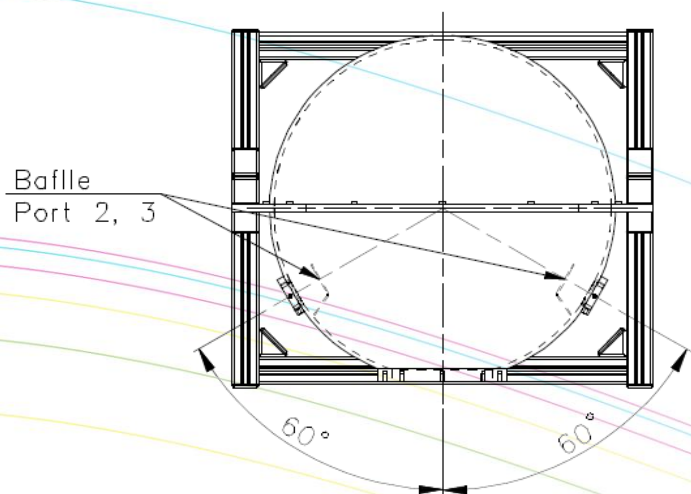


5.2 150mm integrating sphere

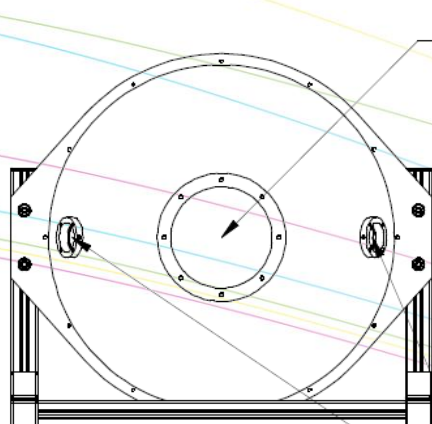
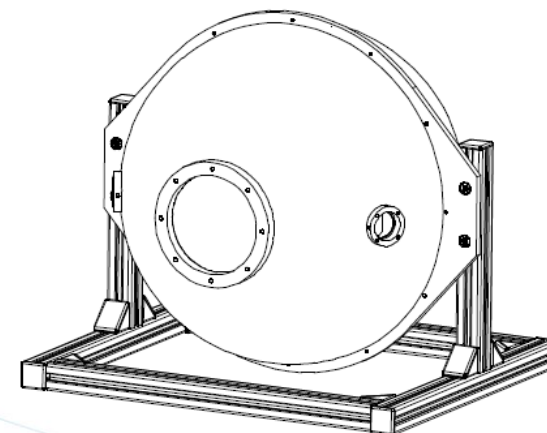




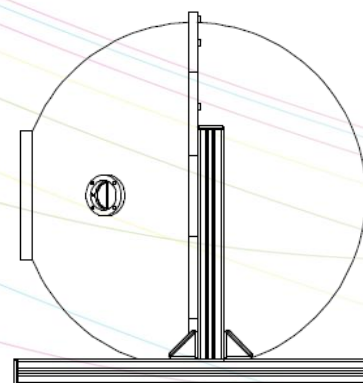
5.3 250mm integrating sphere



Diameter Sphere 250mm



Port 2, 3
Diameter $\varnothing 20\text{mm}$
Recess: $\varnothing 22\text{mm} \times 7\text{mm}$ deep

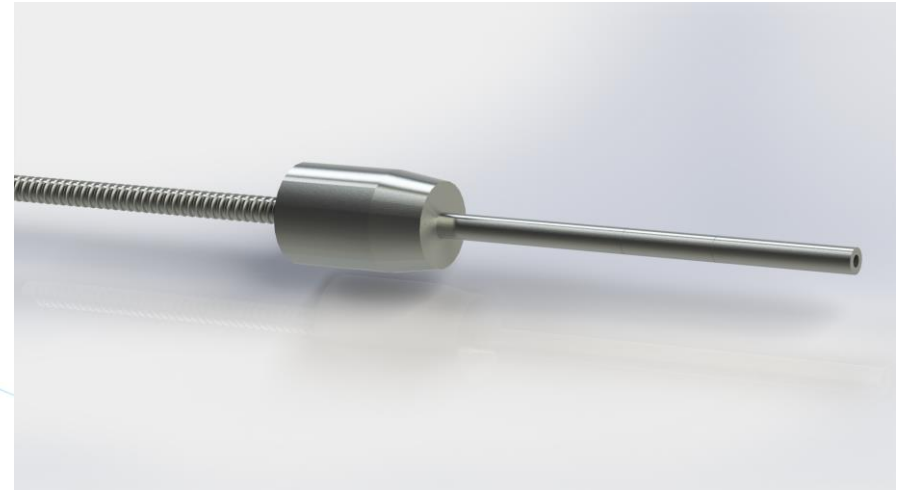




6 Reflective probes

For remote reflective measurements of colour, Admesy has developed reflective probes with a 0 and 45 degree angle. The reflective probes have Admesy's M8 fibre connections which ensure a fixed position when connecting measurement devices and light sources. Allowing more stable measurement results and enhanced repeatability. Both reflective probes are available in two versions. When ordering, please include the desired angle (0 or 45 degree) of reflective probe.

Item code	Description
A-0120013	400µm fibre
A-0120014	200µm fibre





7 Cables & adapters

Admesy offers a number of cables which suit most measurement needs and setups. In case custom solutions are required to meet specific measurement setups, please contact our technical support to discuss the possibilities.

Item code	Description
AC-CBL-GPIO	GPIO interface cable
AC-CBL-PS2	PS2 RS232 cable
AC-ADP-9V	9V DC net adapter



8 Calibration accessories

For Arges, Vates and Cylon, Admesy offers calibration tiles to ensure accurate measurement results.

Item code	Description
AC-CT-GS	Gloss standard
AC-CT-RSC	Reflection standard (calibrated)
AC-CT-RS	Reflection standard (non-calibrated)





9 Dust caps

Dust caps are available for the 10 and 20mm lens system devices.

Item code	Description
AC-DUST-L10	Dust cap for 10mm lens system
AC-DUST-L20	Dust cap for 20mm lens system



Admesy B.V.
Sleestraat 3
6014 CA Ittervoort
The Netherlands

T +31 (0)475 600 232
F +31 (0)475 600 316

www.admesy.com
info@admesy.com

The material in this document is subject to change. No rights can be derived from the content of this document. All rights reserved. No part of this document may be reproduced, stored in a database or retrieval system, or published in any form or way, electronically, mechanically, by print, photo print, microfilm or any other means without prior written permission from the publisher.

Version 1.0.6

08/2017