



# OptoTech

## AZP 200 HP

Autocollimation Testing and Blocking Unit

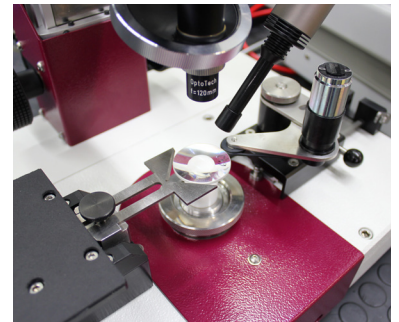


The AZP 200 HP is an optimal multi functional cementing unit for many areas of optical production. Due to various mountings and options, the AZP 200 HP can be perfectly adapted to all special cementing and centering tasks.

**Smart Solutions for Professionals**



Type	AZP 200 HP
Working Range Diameter	up to Ø200mm
Power Requirement	approx. 1 KW
Power Supply	110-230 V, 50-60 Hz
Air Pressure Requirement	approx. 6 bar (60 l/min)
Weight	approx. 70 Kg (depending on options)
Dimensions WxDxH	400 x 300 x 700 mm (Height depending on chosen setup)

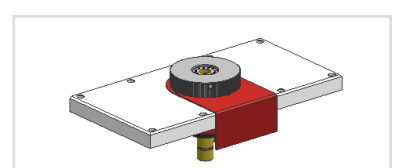
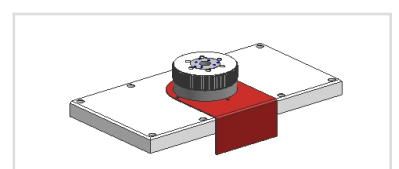
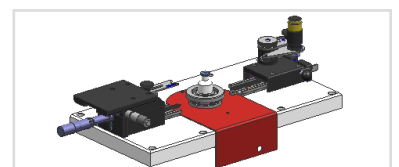
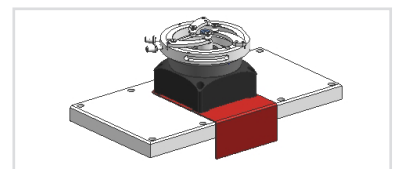
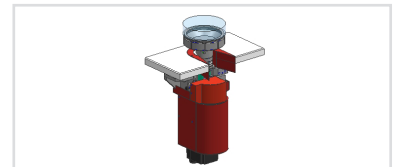


Area of Application (depending on chosen options):

- Cementing of spherical and plano optics on runners
- Cementing of achromates
- Testing of centering errors of achromates and single lenses

Setup:

- Vertical arranged rigid tubular steel stand cast aluminium base with radii slides of different stroke (options)
- Precise Z-Axis adjustment on ball bearing guideways using precision ball screw free from backlash, with ergonomic controls
- Mounted as table top version (standard). Table stand for seating operation available on option
- Including: LED cold light; CMOS Camera; Up-to-date PC for visualization; Software; Digital stripe plate for easy scaling of the measuring range; Easy to change preselected reference spheres on a revolver head; 1 set of reference spheres (f= -35 mm, f= 35 mm, f= 60 mm, f=120 mm, f=200 mm, f=300 mm)
- Depending on individual measuring tasks, there are several spindle configurations available on option. High degree of individualization due to modular construction system
- Fast exchange system allows using several spindle configurations with one and the same machine base
- Autocollimators in different focal lengths available on option
- Z-Axis in different lengths available as manual or motor driven version



**OptoTech** Optikmaschinen GmbH

Sandusweg 2-4  
35435 Wettenberg / Germany  
Tel.: +49 (0)641/98203-0  
Fax.: +49 (0)641/98203-900  
Email: info.de@optotech.net  
Web: www.optotech.net

Date: 12-17-2019, subject to change