

Northrop Grumman Corporation

Cutting Edge Optronics

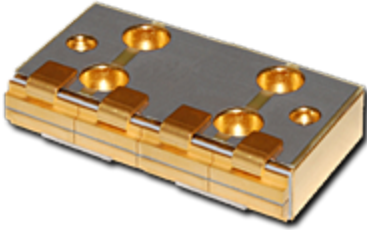
20 Point West Boulevard

St. Charles MO 63301

Phone: 636.916.4900 • Fax: 636.916.4994

Email: st-ceolaser-info@ngc.com

Item # ARR191P800, A Package



The AAAA package is a compact, conductively-cooled laser diode array. The AAAA package is available in pulsed configurations with up to 9.6 kW of peak power or in CW configurations with up to 160 W of continuous power.

The AAAA package mounts easily into a laser system or direct-diode application. It is available in any of CEO's standard wavelengths (790-820 nm, 872-890 nm, 930-950 nm), and custom wavelengths are also available. Many configurations are available with fast-axis collimation, with divergence values less than 0.2° (FWHM).

[Specifications](#) | [Downloads](#) | [Capability Video](#)

Specifications

Wavelength (nm)	780nm – 815nm 875nm – 890nm 935nm – 945nm 965nm – 975nm
Operation	QCW
Lensing Options	Fast-Axis Collimation Slow-Axis Collimation
Total Power	800 W
Diode Bar Count	4
Power Per Bar	200 W
Diode Construction	Golden Bullet (hard solder)

Downloads

Downloads [ARR191P800 Data Sheet](#)

Capability Video



Capability Video