

## Model Name

STC-128GFP

ST: Saga Telecom

C: Commercial grade

1: 1 optical uplink port

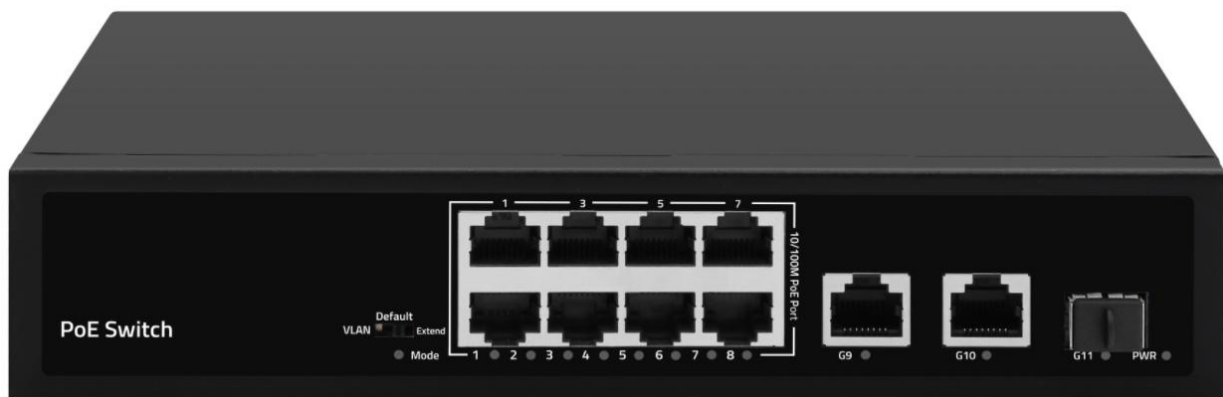
2: 2 Ethernet uplink ports

8: 8 PoE downlink ports

GF: Mixed rate(some ports are Gigabit based, some are Megabit based)

P: Support PoE

It is advised to read specific product description for more information.



## Introduction

STC-128GFP adopts high-quality and high-speed network intelligent and PoE chip.

This PoE switch has 8 port 10/100M PoE + 2 port 1000M Ethernet uplink + 1 Gigabit SFP enjoying

- seamless connection for 10/100M or 10/100/1000M Ethernet
  - three working modes
  - one-key smart simple switching working mode
  - easy to manage and maintain
  - 802.3af and 802.3at standard for each PoE port
  - intelligent detection of powered devices
- (1) power the devices that comply with the IEEE802.3af or IEEE802.3at standards
  - (2) transmit only data to non-PoE devices

With simple and convenient installation, maintenance methods and rich business features, STC-128GFP helps users build a safe and reliable high-performance network.

It is mainly located in the core or convergence layer of user networks such as industrial parks, buildings, factories and mines, government agencies, and residential broadband.

It can be widely used in Ethernet access scenarios such as small and medium-sized enterprises, Internet cafes, hotels, and schools.

## Key Features

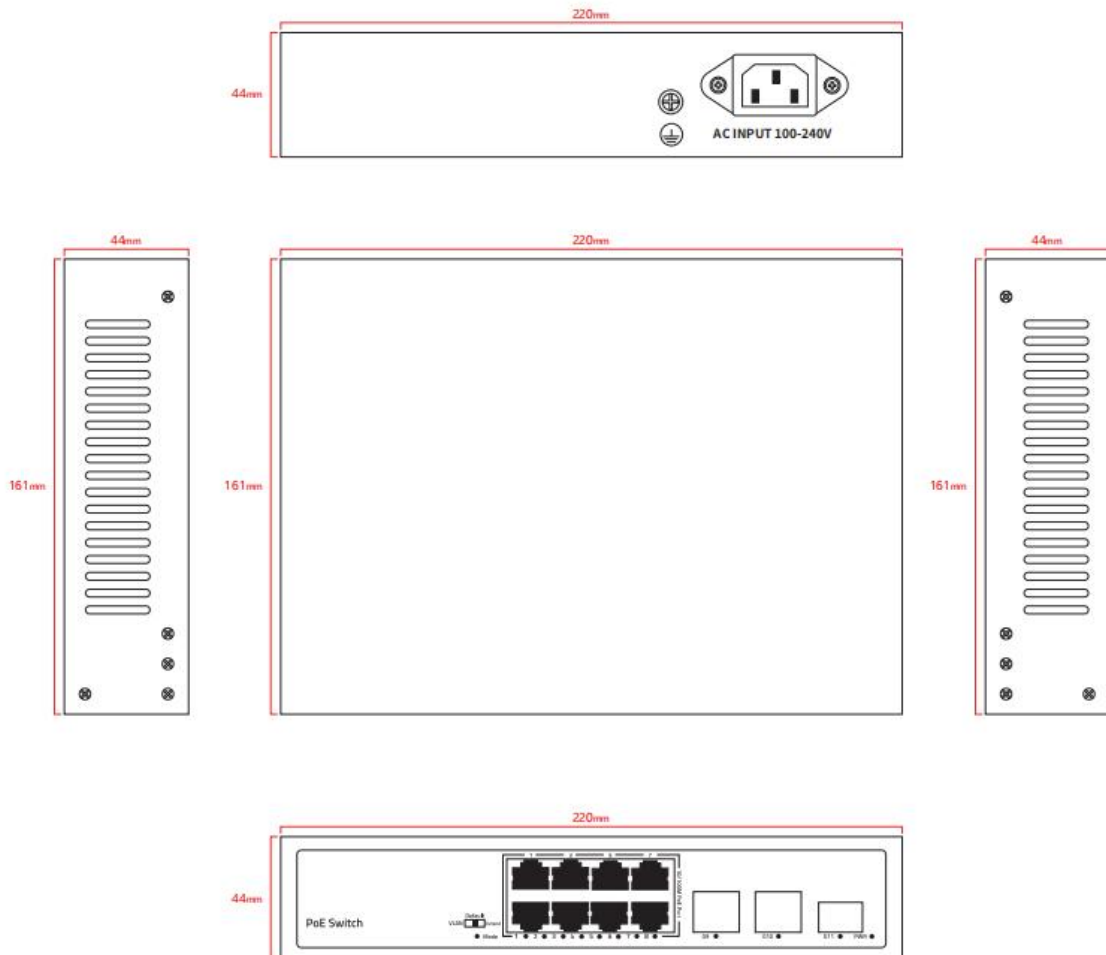
- 8\* 10/100M PoE Ports+2\*Gigabit Ethernet Ports+1\* Gigabit SFP Port
- Comply with IEEE 802.3, IEEE 802.3u, IEEE802.3ab, IEEE 802.3z, IEEE802.3af/at standards
- Ethernet port supports 10/100M adaptive and PoE functions
- Flow control mode: full-duplex adopts IEEE 802.3x standard, half-duplex adopts Back pressure standard
- Support port auto flip (Auto MDI/MDIX)
- Automatically supplied to adaptive devices
- Panel indicator monitoring status and help failure analysis
- Support VLAN mode, OFF mode and Extend mode

## Specification

Product Name	11 port 10/100&1000Mbps Ethernet PoE Switch
Port	8 Port 10/100M PoE + 2 Port 1000M Ethernet Uplink + 1 Gigabit SFP
Switching Capacity	7.6Gbps
Throughput	5.6Mpps
Packet Buffer	1M
MAC Address	2K
Jumbo Frame	4096bytes
Transfer Mode	Store and forward
MTBF	100000 hours
Network protocol	IEEE802.3 (10Base-T) IEEE802.3u (100Base-TX) IEEE802.3ab(1000Base-TX) IEEE802.3z(1000Base-FX) IEEE802.3x (Flow control)
PoE Protocol	IEEE802.3af(15.4W) IEEE802.3at(30W)
PoE Wiring	1/2(+), 3/6(-)
PoE Budget	<b>120W</b>
Industry Standard	EMI: FCC Part 15 CISPR (EN55032) class A EMS: EN61000-4-2 (ESD) EN61000-4-5 (Surge)
Network Medium	10Base-T: Cat3,4,5 or above UTP(≤100m) 100Base-TX: Cat5 or above UTP(≤100m) 1000Base-TX: Cat5 or above UTP(≤100m)
Optical Media	Multi mode fiber : 50/125, 62.5/125, 100/140μm Single mode fiber: 8/125, 8.7/125, 9/125, 10/125μm
Security Certificate	CE/FCC/RoHS
Working Environment	Working Temperature: -10~50℃ Storage Temperature: -40~70℃ Working Humidity: 10%~90%, non-condensing Storage Temperature: 5%~95%, non-condensing
Power	Power Input Voltage: AC100-240V Internal AC-DC Converter: 52V <b>2.3A</b>

LED Indicators	<b>PWR(power supply)</b> On: Power on Off: Power off <b>SW(Dial Code)</b> OFF: OFF On: VLAN Flash: Extend <b>1-10 Green(Link&amp;Data)</b> On: Normal Off: Failed Flash: Data transfer
DIP Switch	<b>VLAN:</b> Port Isolation, 1-8 PoE ports are isolated each other and can only communicate with uplink port 9/10/11 <b>Default:</b> Normal mode, all ports communicate with each other <b>Extend:</b> Link Extension Mode, 1-8 ports PoE and data transmission distance extended to 250 meters, the transmission rate becomes 10M/s

### Dimension



## Packing list

- 1pc switch
- 1pc power cord
- 1pc user manual
- 1pair brackets

Shipping box information(**Below information is approximately accurate**)

Product size: 200mm\*161mm\*44.5mm

Inner box size: 315mm\*215mm\*85mm

Product weight: 0.88Kg

Packing weight: 1.19Kg

Master box size: 445\*445\*335mm

Packing quantity: 10Pcs

Packing weight: 12.9Kg

## Product Picture



## FAQ

### ● Leadtime

1. Production time is usually 5~7 working days for standard(non-customized) models (no more than 50pcs).
2. Shipping time is usually 4~7 days by air
3. In total, it takes 10~15 days for a client to receive the order.

### ● Shipment

1. We will send the goods by air(DHL, UPS or FEDEX) or by sea(for bulk order)
2. It is fine to ship purchased items via customer's shipping account or forwarder.

### ● MOQ

1. 1 Pc/Pair(It is NOT free, Saga Telecom do NOT do FREE SAMPLES)
2. It is fine to have sample testing before bulk order, but 1 Pc/Pair is ONLY about sample testing.
3. When testing proves fine, MOQ is 20pcs(discussion is required if it is about smaller quantity).

### ● Warranty

1. 1 year for commercial models(STC series) and 3 years for industrial models(STI series)
2. Please kindly refer to the "Warranty Policy" for more information.
3. Technical assistance is always available

### ● Payment

1. T/T transfer and PayPal, FULL AMOUNT BEFORE SHIPMENT.
2. It is fine to pay 50% first and another 50% before shipment for bulk order.
3. It is fine to be paid via customer's forwarder(this is usually about RMB payment).

### ● Transaction cost

1. It is standard charge 25usd for EACH T/T transfer whatever the invoice value is.
2. It is 5usd for every 100usd to PayPal a/c, this ratio is standard charge by PayPal

### ● RMA

1. Please contact us ASAP once there is any problem(package or usage)with the supplied products.
2. For every 100pcs, there will be 2 extra free units(2% RMA) against immediate warranty coverage.
3. This rule stands for all Saga Telecom models and even there is not an after-sales issue.

(1) If it is about missing/faulty parts in the packing box.

Please simply use the extra units for the replacement and let us know this problem(we will improve).

(2) If it is about usage problem.

Saga Telecom will provide technical support and send new units when necessary.

### ● OEM

1. Supported, but discussion is required if it is about complex requirements.
2. Below are usual OEM services available.
  - (1) Show client's logo/model on the device/label/management interface...
  - (2) Use client's packing box
  - (3) Design client's product PVC sticker
  - (4) Customize some parts of a model like rear panel/power input terminal block...

Please know that there might be extra cost for OEM services.

**Ordering Information**

<b>Commercial PoE Switch(Unmanaged Series) AC100~240V Input(With Internal AC to 52V-based DC Converter)</b>	
Model name	Description
STC-024FP	2*10/100M RJ45+4*10/100M PoE af/at RJ45, 55W
STC-028FP	2*10/100M RJ45+8*10/100M PoE af/at RJ45, 96W
STC-028GFP	2*10/100/1000M RJ45+8*10/100M PoE af/at RJ45, 96W
<b>STC-128GFP</b>	<b>1*Gigabit SFP+2*10/100/1000M RJ45+8*10/100M PoE af/at RJ45, 120W</b>
STC-0216GFP	2*10/100/1000M RJ45+16*10/100M PoE af/at RJ45, 300W
STC-0224GFP	2*10/100/1000M RJ45+24*10/100M PoE af/at RJ45, 300W
STC-1216GFP	1*Gigabit SFP+2*10/100/1000M RJ45+16*10/100M PoE af/at RJ45, 300W
STC-1224GFP	1*Gigabit SFP+2*10/100/1000M RJ45+24*10/100M PoE af/at RJ45, 300W
STC-024GP	2*10/100/1000M RJ45+4*10/100/1000M PoE af/at RJ45, 60W
STC-028GP	2*10/100/1000M RJ45+8*10/100/1000M PoE af/at RJ45, 120W
STC-114GP	1*Gigabit SFP+1*10/100/1000M RJ45+4*10/100/1000M PoE af/at RJ45, 60W
STC-204GP	2*Gigabit SFP+4*10/100/1000M PoE af/at RJ45, 60W
STC-208GP	2*Gigabit SFP+8*10/100/1000M PoE af/at RJ45, 120W
STC-228GP	2*Gigabit SFP+2*10/100/1000M RJ45+8*10/100/1000M PoE af/at RJ45, 120W
STC-2016GP	2*Gigabit SFP+16*10/100/1000M PoE af/at RJ45, 300W
STC-2024GP	2*Gigabit SFP+24*10/100/1000M PoE af/at RJ45, 300W
STC-2216GP	2*Gigabit SFP+2*10/100/1000M RJ45+16*10/100/1000M PoE af/at RJ45, 200W
STC-2224GP	2*Gigabit SFP+2*10/100/1000M RJ45+24*10/100/1000M PoE af/at RJ45, 400W
STC-114XGDGP	1*10 Gigabit SFP+1*100/1000/2500M RJ45+4*100/1000/2500M PoE, 60W
STC-108XGDGP	1*10 Gigabit SFP+8*100/1000/2500M PoE, 120W
Power cord is included in both the packing box and unit pricing. SFP transceiver is <b>NOT</b> included in both the packing box and unit pricing. Please let us know if you need any customized model.	

## After-sales support

Warranty comes in effect from the date of delivery.

If something is wrong with the package or usage, please let us know asap.

### Case 1, package problem

Any faulty/missing parts in the packing box, Saga telecom will help do the replacement or refund.

### Case 2, usage problem

The standard and most effective procedures(get a feedback form from us) are as below

1, describe what happened, examples as below

- When this problem occurred
- What you did to adjust it like restart the device or change new accessories
- How you use this device like outdoor use for connecting some IP cameras

With this information, Saga telecom could quickly know what is going on and do trouble-shooting

2, provide as many actual photos/video as possible

Wrong connection or improper use may occur.

In this case, photos and videos are helpful and efficient.

3, prepare necessary and relevant accessories such as SFP module/network cable/patch-cord...

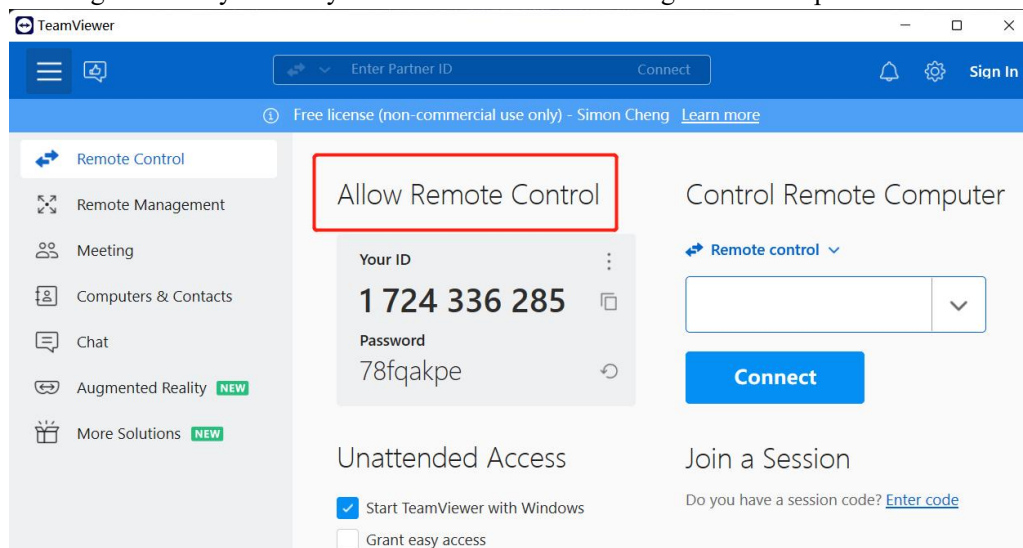
An example is, in a linear network connection, if one SFP module fails, the whole system might have a transmission problem.

The solution would be as simple as replacing a new workable SFP module.

With in-hand accessories, sometimes it is easy to fix the problem.

4, get ready for online meeting

Saga telecom might remotely control your PC to do trouble-shooting with the help of Teamviewer.



For more information, please talk with us or visit [www.sagatelecom.com.cn](http://www.sagatelecom.com.cn)